



EMERGENCY SERVICES BROCHURE

PROUD TO PROTECT LIVES





3

Complete
Safety
Solutions
Provider

4

Rescue Boats

9

Personal Life Saving
Appliances (LSA)

Introduction.....	Page 9
Marine Lifejackets.....	Page 10
Aviation Lifejackets.....	Page 13
Swift Water Rescue Buoyancy Aid.....	Page 14
Petfloat.....	Page 15
Custom Made Lifejackets and Branding Solutions.....	Page 15
Drysuits and Survival Suits - Marine.....	Page 16
Drysuits and Survival Suits - Marine and Aviation.....	Page 16
Accessories.....	Page 19
Man Overboard Equipment (MOB).....	Page 20
Lifebuoys and Rescue Lines.....	Page 22

23

Personal Protection

Introduction.....	Page 23
Sonics Bio-Skin.....	Page 24
Sonics Bio-Shell.....	Page 25
Sonics Milpod.....	Page 26
Sonics Milpod Auto.....	Page 26

27

First Aid and
Medical

Introduction.....	Page 27
Safety Signs and Posters.....	Page 28
Stretchers.....	Page 28
SurvitecMED PCS Modules.....	Page 28
Bespoke Inflatables.....	Page 29

30

Emergency
Communication

Introduction.....	Page 30
McMurdo Electronics Range.....	Page 31
Painswessex Pyrotechnics Range.....	Page 31

32

Liferafts

Introduction.....	Page 32
Liferaft Rental.....	Page 33
Air Droppable Liferafts.....	Page 33

34

Other

Height Safety.....	Page 34
Rope.....	Page 35
Tooling and Hydraulics.....	Page 36
Lifting and Inspection Services.....	Page 37
Servicing and Maintenance.....	Page 38
Training and Consultancy.....	Page 39
Training Essentials.....	Page 39



PROTECTING OVER 1 MILLION LIVES EVERYDAY

EVERY SECOND COUNTS, EVERY DETAIL MATTERS

We call this approach to safety and survival 'proudly obsessive', and it's the essence of our business.

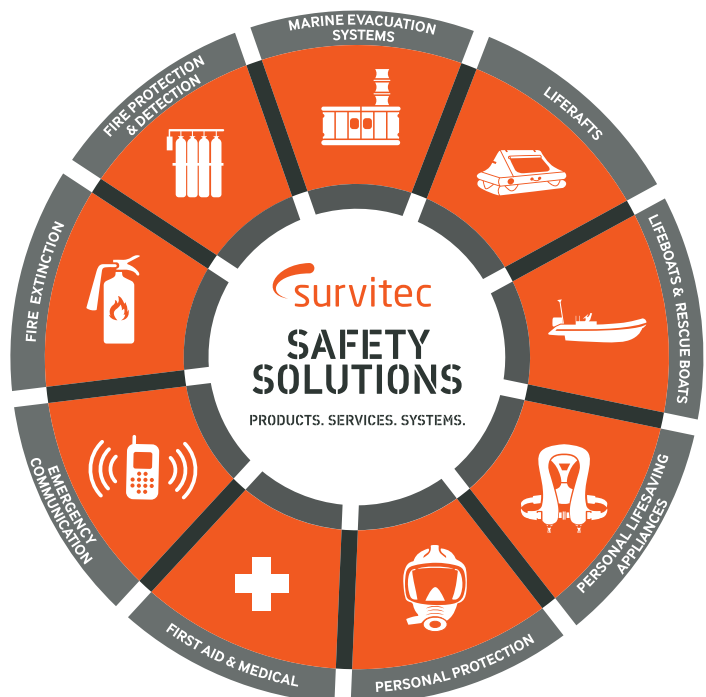
"Here at Survitec, we know that we are part of something remarkable. We take great pride in providing safety equipment to front line SAR organisations, fire brigades and flood rescue teams to support them in their mission to get people all over the world, home safely."

COMPLETE SAFETY SOLUTIONS PROVIDER

Throughout our 160-year history, we have worked hard to become a leader in the design, manufacture, supply and service of safety and survival equipment. We have remained at the forefront of innovation and have a proven success in the emergency service sector.

We hold long standing contracts with leading emergency service organisations in the UK as well as internationally and are the trusted name when it comes to critical safety and survival solutions. We serve a number of markets, including - the emergency services, rescue teams, defence, commercial, marine, offshore oil and gas, aviation, renewable energy and industrial.

Whether your requirements are for one-off product sales or for complete safety asset, our dedicated teams are always ready to listen to your challenges and are on hand to offer a comprehensive solution, tailored for your operation.



RESCUE BOATS

Leveraging over 8 decades of know-how in the design and manufacture of boats, we have gained a wealth of critical knowledge on material construction, precision manufacturing, quality control, testing and certification. The result is a collection of best-in-class solutions that give users the upper-hand in any operational scenario.

Designed to meet the requirements of a multitude of organisations including SAR and fire brigades. This results in a boat range that includes fast rescue crafts, inflatable and semi-rigid inflatable rescue boats.

Leading brands within our portfolio include SurvitecZodiac and DSB. We offer an extensive service from initial product supply, servicing and maintenance, plus repair and supply of spare parts. Within our inflatable boat range is a number of custom options specifically designed for bespoke and unique rescue application - including the new DSB 470 FR.



CUSTOM BOAT SOLUTIONS AVAILABLE

Define your design and customise each element of your boat to ensure a tailored fit to your operational needs.

- | | |
|---------------|-----------|
| ✓ Transom* | ✓ Stowage |
| ✓ Engines | ✓ Anchor |
| ✓ Electronics | ✓ Floor |
| ✓ Seats* | |

*Available customisations on Semi-Rigid inflatable boats only



PRODUCT IN FOCUS



DSB GP 470 FR (FLOOD RESCUE)

RAPID INFLATION DEPLOYMENT

The DSB GP 470 FR inflatable emergency response boat is specifically designed to meet the needs of emergency service teams who require rapid response solutions in ever changing rescue environments.

Available in a number of floor options including an inflatable floor, segmented floor and roll-up floor. The inflatable floor combined with the inflatable keel facilitates smaller outboard engines for the same performance and allows for the boat to be easily stowed and transported - eliminating the need for boat trailers and allowing you to inflate your boat from almost any location.



KEY FEATURES

- ✓ Inflatable deep V shaped keel for improved manoeuvrability
- ✓ Ultra-light, proven durable materials
- ✓ Multiple handles for lifting and towing
- ✓ Extensive servicing and maintenance capabilities
- ✓ Easy to pack and rapidly deploy
- ✓ Low fuel consumption
- ✓ High build quality
- ✓ Bespoke solutions available



DSB INFLATABLE RESCUE BOATS

INFLATABLE KEEL RESULTING IN EXCELLENT MANOEUVRABILITY IN THE WATER

Exceptionally lightweight due to ultra-light Hypalon fabric and smaller outboard engine, our boats require smaller davits making transport and servicing easier, more efficient and economical.

Built for a variety of end users such as the emergency services, our Rescue Boats include operator friendly, advanced performance capabilities with durability and innovative design.

KEY FEATURES

- ✓ Inflatable deep V shaped keel for improved manoeuvrability
- ✓ Reinforced Hypalon seams
- ✓ Hypalon fender tube is UV and abrasion resistant
- ✓ Advanced bow design increases internal space
- ✓ Low weight resulting in easier manoeuvrability
- ✓ Available in 3 sizes: 380, 420*, 470*, 530*, 580
*SOLAS rescue boats also available in this size



**BUILT FOR A VARIETY OF END USERS
INCLUDING THE EMERGENCY SERVICES**

DSB SEMI-RIGID INFLATABLE RESCUE BOATS

ADVANCED BOW DESIGN INCREASES INTERNAL SPACE

Survitec's range of Semi-Rigid Inflatable Rescue Boats are heavy-duty products designed and built to offer emergency services with a product that incorporates maximum durability and increased manoeuvrability over an extended life cycle.

All Semi-Rigid Inflatable Rescue Boats are built to the highest quality from marine-approved materials. Driven to consistently improve our customer offering, our range of Semi-Rigid Inflatable Rescue Boats meet and exceed our customers' expectations and remain unchallenged in today's survival market.

KEY FEATURES

- ✓ Self-draining concealed hull offering additional safety buoyancy
- ✓ Reinforced Hypalon seams
- ✓ Hypalon fender tube is UV and abrasion resistant
- ✓ Aluminium sandwich hull is sea water and capillary crack resistant
- ✓ Exceptional hull design results in excellent manoeuvrability in the water
- ✓ Sealed hull compartment with frames and stringers
- ✓ Advanced bow design increases internal space
- ✓ Sizes available: 3.5SR, 3.9SR*, 4.3SR*, 4.7SR, 5.1SR*, 5.6SR, 6.5SR, 7.2SR, 7.8SR, 8.2SR
*SOLAS rescue boats also available in this size



**EXCEPTIONAL HULL DESIGN RESULTS
IN EXCELLENT MANOEUVRABILITY IN
THE WATER**





DSB RTB 1

AS USED BY THE GERMAN FIRE BRIGADE.

The DSB RTB 1 is robustly designed with tubes constructed from UV resistant Hypalon/Neoprene with four independent air compartments. Inflation is very user friendly and can be done by manual foot bellow pump. The RTB 1 is expertly designed and manufactured to the highest quality.

Made for fast assembly and quick rescue operations, the RTB 1 is part of the standard equipment used by the German Fire Brigade



KEY FEATURES

- ✓ Robust construction
- ✓ Global service network for quick service capabilities
- ✓ High build quality
- ✓ Designed for fast assembly
- ✓ Quick inflation set option available

PERSONAL LIFESAVING APPLIANCES (LSA)

For Survitec helping to protect lives is undoubtedly of paramount importance to us. We believe your organisation should not only be equipped with the Personal LSA needed to meet your regulation requirements, but additionally using our expert design technologies, should perform to the highest possible safety standards to keep your teams safe. A key example of this is our lifejacket bladder design technology. Our expert design team constantly push the boundaries in design, keeping you up-to-date with the most advanced technology in lifesaving equipment.

In addition, we offer a vast range of survival suits including both immersion suits and drysuits - available in multiple fabric technologies, size ranges and with a number of spare and accessory options. Our wide range of man-overboard (MOB) rescue & recovery systems are also available and can be tailored to accommodate your operational requirements.



“

OUR EXPERT DESIGN TEAM CONSTANTLY PUSH THE BOUNDARIES IN DESIGN, KEEPING YOU UP-TO-DATE WITH THE MOST ADVANCED TECHNOLOGY IN LIFESAVING EQUIPMENT.



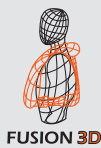
MARINE LIFEJACKETS

CREWFIT 275N XD

Constructed using a heavy duty 500 D cover to maintain longevity of the lifejacket. An external indicator window* with protective panel and Pro-Sensor or Hammar firing mechanism means the status of the lifejacket can be checked by the user before use.

KEY FEATURES

- ✓ Fusion 3D ergonomic shape for comfort and freedom of movement
 - ✓ Available with Heavy Duty 500 D, Fire Retardant or Wipe Clean cover
 - ✓ With fabric shoulder panels for easy cleaning and comfort
 - ✓ Indicator window with protection panel and Hypalon retainer *
 - ✓ Twin waist adjusters
 - ✓ YKK tri point quick burst zip
 - ✓ Supplied with dual crotch straps
 - ✓ The 275 N inflation chamber out performs approval and offers 290 N of buoyancy
 - ✓ Built in chin support and twin lifting beackets
 - ✓ Manual oral inflation tube for additional air top up
 - ✓ S20 AIS and PLB attachment points
 - ✓ Reflective tape to aid visibility
 - ✓ CSL light attachment point
- *On Heavy duty 500D cover option



FUSION 3D



Heavy Duty Red

Heavy Duty Navy
Yellow Wipe Clean
Orange Wipe Clean
Fire Retardant

CREWFIT 150N XD

Constructed using a heavy duty 500 D cover to maintain longevity of the lifejacket. An external indicator window* with protective panel and Pro-Sensor or Hammar firing mechanism means the status of the lifejacket can be checked by the user before use.

KEY FEATURES

- ✓ Fusion 3D ergonomic shape for comfort and freedom of movement
 - ✓ Available with Heavy Duty 500 D, Fire Retardant or Wipe Clean cover
 - ✓ Indicator window with protection panel and Hypalon retainer*
 - ✓ Twin waist adjusters
 - ✓ YKK tri point quick burst zip
 - ✓ Supplied with dual crotch straps
 - ✓ The 150 N inflation chamber out performs approval and offers 190 N of buoyancy
 - ✓ Built in chin support and twin lifting beackets
 - ✓ Manual oral inflation tube for additional air top up
 - ✓ S20 AIS and PLB attachment points
 - ✓ CSL light attachment
 - ✓ Reflective tape to aid visibility
- *On Heavy duty 500D cover option



FUSION 3D



Yellow Wipe Clean

Heavy Duty Navy
Heavy Duty Red
Orange Wipe Clean
Fire Retardant

CREWFIT XD LIFEJACKET - RETROFIT OPTIONS



Chequered retro-reflective tape.
Available in four colours

- ✓ Red
- ✓ Blue
- ✓ Green
- ✓ Black





CREWFIT XD QUICK RELEASE (QR) BELT

The XD QR Belt is a personal safety system aimed for professional use by emergency service teams during bank side flood rescue. Designed to provide a quick release attachment point, this system facilitates the use of an O-ring and subsequent cowtail into one simple configuration. This personal safety system is to be used in conjunction with any Crewsaver Crewfit XD lifejacket and can be purchased as standard with the lifejacket or fitted retrospectively.

KEY FEATURES

- ✓ Combines a quick release belt with an XD lifejacket in one simple configuration
- ✓ Facilitates the use of a cowtail with quick release function
- ✓ Quick release buckle with pull toggle for easy deployment
- ✓ Durable nylon & polyester construction to withstand the harshest environments

CREWFIT 150N HF

The Crewfit 150 N HF combines the very best in design, performance and comfort. The ergonomic Fusion 3D shape, High Fit profile and twin waist adjusters allow for easy donning, freedom of movement and ensures maximum comfort even during long periods of use.

Heavy duty 500 D front panels provide excellent durability for the working marine markets, whilst fabric shoulder panels ensure a comfortable fit. In addition, this compact and lightweight workvest includes a soft loop harness point and crotch strap fitted as standard. Also included is an external indicator window allowing the user to check the firing mechanism with ease when required.

KEY FEATURES

- ✓ Fusion 3D ergonomic shape for comfort and freedom of movement
- ✓ Compact High Fit profile for comfort
- ✓ Heavy Duty 500 D front body panels for maximum durability
- ✓ Indicator window
- ✓ Twin waist adjusters
- ✓ YKK quick burst zip
- ✓ Soft loop harness point
- ✓ Supplied with dual crotch straps
- ✓ The automatic 150 N inflation chamber out performs approval and offers 180 N of buoyancy
- ✓ Built in chin support and lifting becket
- ✓ Manual oral inflation tube for additional air top up
- ✓ S20 AIS attachment point
- ✓ Reflective tape to aid visibility
- ✓ CSL light attachment point



FUSION 3D

CREWFIT 150N

Latest developments from Crewsaver's continual programme of research and development brings you a traditionally designed lifejacket incorporating modern day technology.

The Crewfit 150 N and Crewfit 150 N Wipe Clean offers integral safety features such as the inflatable chin support. In addition, the lifejacket remains easy to regularly maintain, service and repack using a Velcro closure system to ensure efficient and cost effective solutions for your operation.

KEY FEATURES

- ✓ The automatic 150 N inflation chamber out performs approval and offers 165 N of buoyancy
- ✓ Available in Heavy Duty or Wipe Clean
- ✓ Built in chin support and lifting becket
- ✓ Manual oral inflation tube for additional air top up
- ✓ Reflective tape to aid visibility
- ✓ Waist adjuster
- ✓ Velcro closure system
- ✓ Supplied with dual crotch straps
- ✓ CSL light attachment point





INSHORE 380N

The Inshore 380N also comes complete with all the safety features you would expect from a professional lifejacket including twin flare pockets, integrated safety lines, spray hood and thigh straps.

Often operating in severe weather conditions, the lives of rescue crews depend on proven and reliable safety equipment. The Inshore 380 N has been designed, tested and developed in collaboration with the RNLI, ensuring it is suitable for rescue boat crews of inshore lifeboats or advanced powerboat users.

KEY FEATURES

- ✓ Tested and developed in collaboration with the RNLI
- ✓ Fitted with a heavy duty cover
- ✓ Light, retro-reflective tape
- ✓ Twin flare pockets
- ✓ Integrated safety harness
- ✓ Spray hood and crotch straps fitted as standard
- ✓ Buddy line
- ✓ Approved to BSEN ISO 12402-2 and BESN ISO 12402-6/DIRECTIVE 89/686/EEC



OFFSHORE 290N

The Crewsaver Offshore 290 N is a twin-chamber, 290 N lifejacket - designed, tested and developed in collaboration with the RNLI, ensuring its complete suitability for use by rescue boat crews in offshore and extreme conditions.

Complete with all the safety features you would expect from a professional lifejacket, the Offshore 290 N includes twin flare pockets, integrated safety line, spray hood and thigh straps.

KEY FEATURES

- ✓ Twin-chamber lifejacket
- ✓ UML MK5I standard automatic inflation mechanism one chamber
- ✓ Halkey Roberts manual mechanism one chamber
- ✓ Supplied c/w Chest Harness, Twin Hook Safety Line, Flare Pocket, SOLAS/MED-approved light, Spray Hood, Crotch Straps and Buddy Line
- ✓ Approved to BSEN ISO 12402, Directive 89/686/EEC



EVOLUTION 250N

A hybrid, general purpose, waistcoat style lifejacket designed for operating in an environment where frequent water immersion is probable. The Evolution 250N provides a more modern design giving the user additional buoyancy, comfort and manoeuvrability. Constructed with 60N of inherently buoyant foam and 190N quick turn inflation chamber provides the user with the benefits of a buoyancy aid and the increased safety solution of a lifejacket. Manual options allow the wearer to enter and operate in the water safely remaining buoyant with the option to inflate the lifejacket if required.

KEY FEATURES

- ✓ Dual lifting beackets
- ✓ Dual crotch straps with back stowage pocket
- ✓ Back haulage handle
- ✓ 2 layer abrasion resistant, wipe clean, foam-lined impact protective chamber cover
- ✓ Dual front cargo pocket
- ✓ Knife sheath pocket
- ✓ Ability to incorporate AIS or PLB systems
- ✓ Reflective tape to aid visibility
- ✓ Optional SOLAS-approved light

SEACREWSADER 290N 3D

The SOLAS approved Seacrewsader 290N 3D offers a unique design allowing the user to remove the outer cover of the lifejacket. This provides the ability for the user to replace the cover easily should there be a requirement change. Cover options include heavy duty, fire retardant and wipe clean options.

KEY FEATURES

- ✓ Twin chamber 275 N MSC 200 (80)/ SOLAS/ MED-approved lifejacket
- ✓ Easy to replace cover system
- ✓ Waterproof service labels
- ✓ Can be used with a PLB and AIS
- ✓ Fusion 3D cover
- ✓ High strength plastic quick release buckle
- ✓ YKK QBZ Tri-burst zip
- ✓ Foam padded cover for added protection
- ✓ Spare covers can be purchased separately including fire retardant and wipe clean options



AVIATION LIFEJACKETS

MK51

Developed in response to the CAA CAP 1034 Category 'A' performance guidelines, the new MK51 Aircrew lifejacket comprises of a form fitting waistcoat that enables users to customise pocketary, a slim, unobtrusive lifejacket unit, and a fully integrated Emergency Breathing System (EBS).

Constructed from a durable flame-retardant material, the unique modular design allows users to configure survival pockets for their own individual operating requirements, whilst the slim and ergonomic design allows for maximum comfort and manoeuvrability. The jacket features an option of single or twin inflatable bouyancy chambers. The modular design offers improved maintenance and servicing costs as individual components can be easily removed and serviced.

KEY FEATURES

- ✓ Slim line modular design for optimum fit, mobility and comfort
- ✓ Fully integrated emergency breathing system with rapid user access
- ✓ Integral survival systems incorporating single chamber high performance life preserver and personal locator beacons (PLBs)



HALO

The Survitec HALO has been designed to satisfy the needs and requirements for helicopter pilots, rear aircrew, and search and rescue (SAR) teams. Due to growing demands, the HALO has been designed for harness compatibility for use in the offshore windfarm industry. The HALO fulfils both passenger and crew requirements for aviation, wind energy and marine applications and as our next generation alternative to the current MK50/MK51.

Constructed from flame retardant material, the new lifejacket design includes modular equipment pockets for accessories such as personal locator beacons, flares, heliographs and lightweight Emergency Breathing Systems (EBS). The life jacket's unique sculpted design increases comfort and wear for long durations.

KEY FEATURES

- ✓ Increased comfort
- ✓ Fully integrated EBS with Reinforced protection of the 1st & 2nd stage
- ✓ Reduced bulk and modular design for optimum fit & mobility
- ✓ Accessory windows for easy
- ✓ Checks on strobes and plb's
- ✓ Left and right options for EBS positioning





SWIFT WATER RESCUE (SWR) BUOYANCY AID

The Swift Water Rescue (SWR) is a top-of-the-range multi-purpose emergency response 80 N buoyancy aid. Its one-size-fits-all design featuring intuitive waist adjusters, strategically positioned retrieval handles and a quick release belt makes this buoyancy aid an easy and economic choice for rescue teams. Designed to enable carriage of accessories, including VHF radio, ensures all equipment is easily stored and accessible.



KEY FEATURES

- ✓ Side flaps for impact protection which can also be folded to stop build up of heat
- ✓ Reflective print to aid visibility
- ✓ Specially positioned handles to enable a swift retrieval
- ✓ VHF radio pocket with side zip entry for easy use
- ✓ ID Flag to allow own branding
- ✓ Quick release buckle with toggle
- ✓ Custom one size fits all fit to enable swift donning
- ✓ Anti snag buckle cover
- ✓ Velcro tab for cowtail attachment

LIFEJACKET SERVICING

See page 38 for our extensive lifejacket servicing capabilities



PETFLOAT

The low-profile design is comfortable, easy to fit and includes an integral handle that provides a load spreader lift point, perfect for when your pet decides to go for a swim! The Petfloat also comes with a handy pocket for lead and disposable bag storage.

KEY FEATURES

- ✓ Suitable for most breeds of cats and dogs
- ✓ Soft closed cell foam for comfort
- ✓ Easily adjustable and quick to fit
- ✓ Lifting handle
- ✓ Plastic ring for lead attachment

Also available in a Military Petfloat option

— minimum order quantities apply.



CUSTOM MADE LIFEJACKETS AND BRANDING SOLUTIONS

Crewsaver has an enviable global reputation for the design and manufacture of the highest quality, most innovative safety equipment and associated products. Harness the power of our skilled in-house team yourself and we'll create, build and brand solutions to perfectly meet your own specifications – including lifejackets, buoyancy aids, drysuits, pet floats and marker buoys.

With a long history of outstandingly creative, cutting edge solutions to our credit, we are uniquely equipped within our industry to give you the very best expertise.

- ✓ New design
- ✓ Alter to fit
- ✓ Branding

Head to **page 39** for more information on design and consultancy



DRYSUITS AND SURVIVAL SUITS -MARINE



FREE STRATUM UNDERFLEECE

ATACAMA DRYSUITS

3 LAYER BREATHABLE FABRIC WITH ENHANCED WATERPROOF PROPERTIES

With 3 layer breathable fabric, Crewsaver's Atacama Pro and Sport drysuits rival their namesake desert as the driest place on Earth. The Glideskin neoprene wrist and neck seals, plus latex socks, further help to keep the water at bay.

KEY FEATURES

- ✓ 3 layer breathable fabric
- ✓ YKK Aquaseal flexible zip construction
- ✓ Articulated arms and legs for increased freedom of movement
- ✓ Reinforced seat and knees Leg pocket with D-ring attachment
- ✓ Glideskin neoprene wrist and neck seals
- ✓ Elasticated waist removable braces



ATACAMA SPORT DRYSUIT



ATACAMA PRO DRYSUIT

Lower back stretch mesh panel for increased comfort and flexibility

Expandable leg pockets with D-ring attachment

Adjustable wrist and ankle cuffs



1000 SERIES GEN 2 IMMERSION SUIT (TRI-APPROVED)

The new 1000 Series Tri Approved GEN 2 suit is approved to ETSO/MED and CE-PPE standard, making it capable of supporting aviation transit, constant wear work and marine transit from a single suit. Designed to exceed the latest European aviation and marine standards, the robust suit structure is fully waterproof, breathable and inherently flame retardant. Enhanced protection is afforded through durable watertight seals at the neck and wrists, and from the re-enforced Sofishield implemented into the knee, seat and elbow areas. The thermal lining uses state-of-the-art Outlast® Phase Change Materials (PCM) technology to improve thermal comfort and reduce thermal stress.



KEY FEATURES

- ✓ Reinforced seat, knee and elbow protection for improved throughlife capability
- ✓ Grab handle to aid raft scramble in the event of an emergency
- ✓ New stronger metal zip affords wear higher level of protection
- ✓ Integrated air expulsion valves to significantly reduce thermal burden
- ✓ Intelligent Pazifik fabric for added durability
- ✓ Optional Smart Layer Thermal Heat Management undergarment for Air-ops
- ✓ Can double up as an offshore abandonment suit with hermetically sealed foil pouch offering 5 year recertification life
- ✓ Available for rental or purchase

1000 SERIES FRONT AIRCREW SUIT

Using technology developed for the NASA space programme, aircrew will benefit from enhanced insulation that regulates the microclimate inside the suit to improve comfort and reduce thermal stress. Hygiene is improved by the use of antimicrobial nano-technology in the thermal liner. The water tight seals at the neck and wrists are stronger, more flexible and less prone to damage making them safer and more effective. New waterproof zipper technology is used to seal the suit ensuring maximum protection.

KEY FEATURES

- ✓ European Aviation Safety Agency (EASA) approved
- ✓ Improved standard sizing – customer feedback has been implemented to produce an improved standard size matrix
- ✓ Introduction of optional internal braces to improve wearer comfort
- ✓ Inherently flame retardant material provides optimum fire protection
- ✓ Lower leg pocket has been moved to a central position to support compatibility across all aircraft types
- ✓ Available with either Velcro attached Short Length Liner or separate Thermal Insulated Garment (TIG)
- ✓ Free made to measure service available
- ✓ Available for rental or purchase
- ✓ Now available with up to 12 months servicing requirements
- ✓ Available as a 2 suit rental for the price of 1. Allows Aircrew to continue flying whilst 2nd suit is returned for annual servicing



RESCUE SWIMMER IMMERSION SUIT

The Rescue Swimmer suit was designed in collaboration directly with our emergency services customers who perform sea and river rescue in cold water climates. The Rescue Swimmer suit uses the very latest in technical textile technology to provide the wearer with a number of benefits including waterproof design, breathable and inherently flame retardant fabric and durable and robust material. Chequered reflective tape is used for easy identification to civilians. Various pocket configurations are available for multi wearer requirements.

KEY FEATURES

- ✓ Designed specifically to accommodate the operational needs of first responder teams
- ✓ Reinforcements on critical areas including knee, seat and elbow for added durability
- ✓ Multiple pocket configurations available for essential equipment, including integral radio pocket
- ✓ Waterproof plastic zip for improved protection and seal integrity
- ✓ Internal braces to aid with the donning and doffing of suit
- ✓ Rescue badge on the reverse to identify user as emergency services personnel
- ✓ Inherently flame retardant material providing optimum protection against fire



1000 SERIES COASTGUARD PASSENGER SUIT

The 1000 Series Coastguard Suit has been designed specifically for passenger transportation of emergency services personnel. Manufactured from a waterproof, flame retardant, anti-static and durable fabric, the new suit possess a number of comfort and safety critical features. This includes hyper stretch neoprene seals, storm collar/neck/cuff/ankle and epaulet covers, extreme cold proof metal and neoprene zip, Sofi-shield knee, seat and elbow reinforcements and internal braces for ease of donning.

KEY FEATURES

- ✓ Designed in partnership with emergency service agencies in Canada
- ✓ Flame retardant, anti static, durable fabric
- ✓ Waterproof/breathable material
- ✓ Hyper stretch neoprene seals
- ✓ Metal/neoprene zip designed to meet the extremely cold temperatures
- ✓ Sofi-shield knee, seat and elbow reinforcements
- ✓ Mesh for drainage and ventilation
- ✓ Introduction of optional internal braces to improve wearer comfort and further support the use of standard sizes
- ✓ Free made to measure service available
- ✓ Various zip configurations
- ✓ Now available with up to 12 months servicing requirements



1000 SERIES REAR SAR WINCHMAN SUIT

The 1000 Series SAR Winchman works to protect the SAR Winchman in the most unpredictable environments. Manufactured utilising robust and durable fabric, the outer shell of the suit is waterproof, breathable and inherently flame retardant. The thermal lining uses state of the art Outlast® Phase Change Materials (PCM) technology, to improve thermal comfort and reduce thermal stress.

KEY FEATURES

- ✓ Optimised design ensures maximum protection with added flexibility and mobility
- ✓ Compatible with all major aircraft platforms
- ✓ European Aviation Safety Agency (EASA) approved
- ✓ Waterproof and breathable to improve aircrew cockpit comfort
- ✓ Available with either Velcro attached Short Length Liner or separate Thermal Insulated Garment (TIG)
- ✓ Free made to measure service available
- ✓ Available for rental or purchase
- ✓ Now available with up to 12 months servicing requirements
- ✓ Available as a 2 suit rental for the price of 1. Allows Aircrew to continue flying whilst 2nd suit is returned for annual servicing



ACCESSORIES



KORTEX HELMET

KEY FEATURES

- ✓ Internal ratchet adjustment system and chin strap to provide the perfect fit
- ✓ ABS outer shell for impact protection
- ✓ PU foam lining for comfort and shock absorption
- ✓ Available in three colourways and two wide-ranging sizes
- ✓ Ventilation holes
- ✓ CE approved: CE EN1385



ERGOFIT SAFETY KNIFE

KEY FEATURES

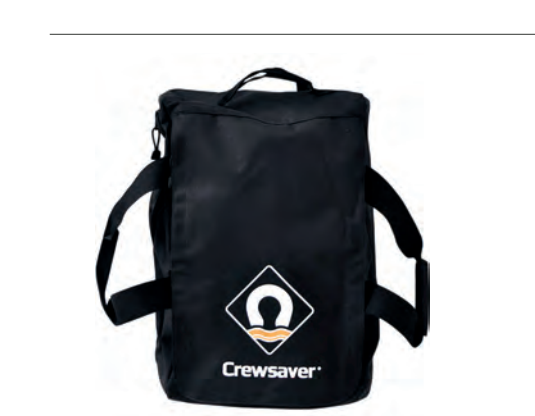
- ✓ Safety blade for safe stowing
- ✓ Constructed from durable nylon plastic
- ✓ Ergonomically designed for fast release cut
- ✓ Carry pouch included for attachment to lifejacket



BUTE DRY BAG

KEY FEATURES

- ✓ Abrasion resistant with heavy duty wrap around base
- ✓ Semi opaque rip-stop panel for easy location of contents
- ✓ D-ring attachment for lashing down
- ✓ Roll top to keep contents dry
- ✓ 55 L option comes with shoulder strap



LIFEJACKET BAG

KEY FEATURES

- ✓ Holds approximately 4-5 lifejackets
- ✓ Multiple carry handles
- ✓ Drainage panels for safe storage



MAN OVERBOARD EQUIPMENT

Survitec can supply a broad range of man overboard recovery products to help ensure you are fully equipped to aid recovery of a casualty from the water. Our comprehensive range includes rescue and recovery systems, man overboard retrieval devices, ladders and nets.

All our products are manufactured using the toughest, most hard wearing materials possible and available in multiple variations to suit your specific survival needs.

CREWSAVER PERSONAL RECOVERY DEVICE 'CPRD'

The CPRD is an ergonomic, safe and effective man overboard retrieval device (MOB), designed to assist in the retrieval of conscious and unconscious casualties from the water. Retrieval can be made horizontally without risking further injury to the casualty, or to the rescuer. Available in a variety of sizes, each CPRD is tailored to suit the individual needs of your specific environment and application.

Constructed from high density delrin plastic rungs and steel rods, it is fitted with Marine Grade 316 stainless steel snap hooks. We have added lifting strops and heaving lines to aid a swift and practical retrieval. In its larger sizes, the Crewsaver PRD can be used as a scramble net on the side of a vessel and in rescue zones or other environments where casualties are in a position to recover themselves - such as canal locks or dock walls. The CPRD is suitable for use by tugboat operators, standby vessels, cruise and ferry operators, MOD establishments, the Coastguard and other rescue organisations. It can also be put to work in many other applications.

There is a three year servicing requirement for each CPRD which is readily available through the Survitec international network.

SOLAS approval : LSA Code Regulation I/1.2, IMO Resolution MSC.81 (70) Part 1 Section 1.2 & 1.4, SAE J 1960, ISO 4892-2



FAST RESCUE CRAFT (FRC)

The CPRD Fast Rescue Craft is a SOLAS approved Man over Board (MOB) retrieval device, ergonomically designed to assist in the retrieval of conscious and unconscious casualties from the water. Retrieval can be made horizontally without risking further injury to the casualty, or to the rescuer.

The device is available as a complete kit, in two sizes, and is supplied in a robust and highly visible case that is suitable for stowing in the craft. It comes complete with hypolon patch fixing kits to attach it to either side of the craft.

Constructed from high density plastic rungs and steel rods, it is fitted with Marine Grade 316 stainless steel snap hooks. We have added lifting strops and heaving lines to aid a swift and practical retrieval.

There is a three year servicing requirement for each Fast Rescue Craft CPRD which is readily available through the Survitec international network.



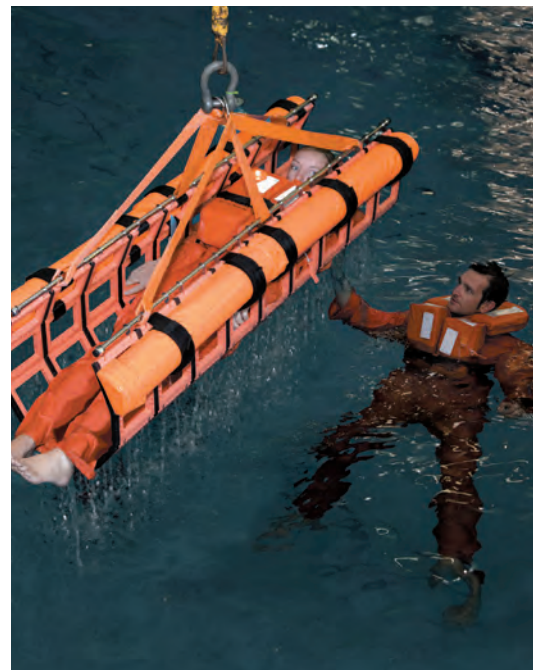
RESCUE STRETCHER KIT

The Rescue Stretcher Kit is an ergonomic, safe and effective stretcher designed to assist in the retrieval of conscious and unconscious casualties from the water. Retrieval can be made horizontally without risking further injury to the casualty, or to the rescuer.

The Rescue Stretcher can be used in conjunction with a rescue swimmer, ensuring the casualty is easily transferred into it even when rescuing direct from the water. The stretcher is then quickly hoisted clear of the water and transferred back into the craft with a block and tackle or davit arrangement. Constructed from high density plastic rungs and steel rods, it is fitted with Marine Grade 316 stainless steel snap hooks. We have added lifting strops and heaving lines to aid a swift and practical retrieval.

Available in two sizes, 9x8 and 11x10, there is a three year servicing requirement for each Rescue Stretcher, which is readily available through the Survitec international network.

SOLAS approval : LSA Code Regulation I/1.2, IMO Resolution MSC.81 (70) Part 1 Section 1.2 & 1.4, SAE J 1960, ISO 4892-2



FIBRELIGHT RECOVERY CRADLE

The Fibrelight Cradle is lighter, more compact and more versatile than any comparable devices. The cradle requires only regular inspections and minimal maintenance every three years and can be inspected whilst on board the vessel. The cradle can be easily rolled and stowed.

Primarily designed for use by rescue craft, rigid inflatables and ship lifeboats and marinas, however it can have multiple other uses.

SOLAS approved and can be operated by a single crew member. The Cradle can also serve as a boarding ladder, scramble net and stretcher and has no parts to corrode or degrade in seawater. This cradle is lighter, more compact than any comparable devices.



SB RESCUE SLING

The SB Rescue Sling is ideal for recovering a casualty from a steep-sided canal or a lake, without the rescuer having to enter the water.

The unit is a highly effective piece of man overboard rescue equipment and has proved popular on pilot boats, workboats, small passenger craft and rescue vessels. Easy to use, this rescue sling has an effective reach in excess of 8m and can be rearmed in just 20-30 seconds.



LIFEBUOYS & RESCUE LINES

Survitec has the in-house expertise to deliver a comprehensive package of Man Overboard rescue equipment including lifebuoys, throwlines and rescue slings.



PERRYBOUY



PERRYLINE



LIFELINE



HORSESHOE BUOY



THROWING STROP



RESCUE SLING



THROW BAG



PERRY LINE



PERSONAL PROTECTION - SONICS

Introducing SONICS, the Survitec Operational Network of Integrated chemical, biological, radiological and nuclear (CBRN) Systems, a complete end to end prime contractor and systems integrator service for CBRN. SONICS is an independent, flexible service framework that consolidates your every CBRN requirement into a fully integrated system. This includes a total solution designed to ensure maximum readiness for civil, military and government organisations, comprising of product/system design, testing, qualification and accreditation, supply chain management, training needs analysis and personnel training, servicing and maintenance, and obsolescence management.





SONICS BIO-SKIN

Lightweight and versatile CBRN protection. The SONICS Bio-Skin is a lightweight, discrete and breathable stretch fabric with a unique design that offers exceptional mobility, comfort and protection in a CBRN environment. Leveraging the very latest GORE® CHEMPAK® Selectively Permeable Membrane (SPM), the Bio-Skin's chemical and biological properties provides maximum protection while minimising thermal burden. Its versatile design easily integrates with many types of outer garments for use in Air, Land and Sea environments. In addition, the GORE® CHEMPAK® Selectively Permeable Membrane used to construct the SONICS BioSkin is component certified to meet NFPA 1994, Class 3 current edition standards for 'warm zone' operations.

KEY FEATURES

- ✓ Typical fabric system weight is 270 g/m²
- ✓ SPM is air impermeable, the membrane barrier system blocks the penetration of aerosols and particulates
- ✓ Protection even after exposure to BFC's (Battle Field Contaminants)
- ✓ SPM passes the National Fire Protection Standard 1994 Standard on Protective Ensembles for First Responders to CBRN Terrorism Incidents (Class 3)
- ✓ Air impermeable barrier protects even in windy conditions



SONICS BIO-SHELL

The greatest barrier between you and the world's deadliest threat. The SONICS Bio-Shell is a CBRN protective suit consisting of a unique slim, lightweight fabric that allows for significant weight/bulk reduction and enhanced CBRN protection. Leveraging GORE® CPCSU-2 Flex Fit technology, the Bio-Shell represents a step change in CBRN protection, with up to 50% reduction in weight compared to traditional carbon based protective clothing. Its protective properties also combat a much broader threat, acting as a barrier against conventional chemical warfare agents in vapor form, toxic industrial chemicals, aerosolized particulates, liquid under force (i.e. when kneeling or wearing combat equipment) and biological hazards such as blood-borne pathogens like Ebola and HIV.

The Bio-Shell's core layer is constructed using the very latest GORE® CHEMPAK® Selectively Permeable Membrane (SPM). The protective SPM fabric is made from a lightweight, breathable film, which allows moisture vapor to escape, resulting in significant reduction in thermal burden and fatigue. The Bio-Shell also features a number of integrated stretch panels incorporated in key areas to facilitate improved mobility, ensuring its wearer can complete operational tasks. The Bio-Shell includes a separable outer garment that can be customised to any military or organisation's pattern/colour preference.

KEY FEATURES

- ✓ Up to 50% reduction in weight compared to traditional carbon based protective clothing
- ✓ Made from GORE CHEMPAK Selectively Permeable Membrane fabric which is lightweight and breathable
- ✓ Can easily be decontaminated
- ✓ Offers broad protection to a range of CBRN threats with no compromise in thermal burden
- ✓ Features stretch panels in key areas to facilitate improved mobility



SONICS MILPOD

The Milpod is a specialist man portable stretcher used for extraction and treatment of a casualty that has been injured or contaminated in a CBRN environment.

The system ensures the first responder team or the aircraft or vehicle used for the extraction are not contaminated. Constructed from CBRN resistant materials, it is designed for rapid deployment and is easily assembled once removed from its stowage. The Milpod consists of an inflatable base and frame and a casualty envelope, which the casualty is placed into.

KEY FEATURES

- ✓ Rapid deployment in any environment, maritime capable
- ✓ Design optimised for immediate care administration
- ✓ Developed by specialist team of SOF medics
- ✓ Maximizes survival rates in a CBRN environment

MILPOD AUTO

Constructed from CBRN resistant materials, the MilPod Auto can be deployed in under 10 seconds from a compact man portable stowage to a fully operational mobile lab requiring no additional parts to assemble.



FIRST AID & MEDICAL

Many of your medical equipment needs are available through the Survitec portfolio; this includes a variety of first aid kits, defibrillators, eye wash stations, emergency showers and oxygen resuscitation equipment. Our entire range of products is specially designed for ease of use and is most importantly consistently reliable.



OUR ENTIRE RANGE OF PRODUCTS IS SPECIALLY DESIGNED FOR EASE OF USE AND IS MOST IMPORTANTLY CONSISTENTLY RELIABLE.

SAFETY SIGNS & POSTERS

We can supply a range of safety signs, photoluminescent tapes, posters and manuals to suit your vessel / workplace requirements.



STRETCHERS

OUR MEDICAL, FIRST AID & EMERGENCY EQUIPMENT INCLUDES AN EXTENSIVE RANGE OF STRETCHERS TO SUIT EVERY NEED OR OCCURRENCE.

Neil Robertson Standard Rescue Stretcher allows for a simple and safe recovery from a difficult or unconventional situation

Basket Stretcher this basket can be lifted across rough or muddy terrain without affecting the patients wellbeing

Scoop 65 Exl enables easy access to awkward low spaces

Paraguard Excel Rescue Stretcher ideal for search and rescue operations and can be used to rescue casualties from building collapse, industrial incidents and confined spaces

Scoop Model S265 Stretcher designed for first call work, so funeral personnel can uncouple either end, or both ends of the stretcher

Combined Space Rescue Stretcher for both horizontal and vertical lifting for confined space and rescue from height

Ambulance Pouch

Ambulance pouches for transporting recovered bodies from the water to mortuary



BASKET STRETCHER



SCOOP MODEL S265 STRETCHER



AMBULANCE POUCH

SURVITECMED PCS MODULES

Subject matter experts at a component level

Working in partnership with over 44 leading medical companies we supply only the very best equipment, with each component carefully packed into a suite of modules optimised for the 3 phases of care.



CARE UNDER DURESS



FIELD CARE



EVACUATION

Each module has been designed by our expert team of special operation force (SOF) medics and rescue professionals to maximise user interface, speed of care and mobility of equipment. Our pre-hospital care system delivers modular capabilities for several different trauma scenarios including extraction, field mobility, field and evacuation care including tactical, sustainment care, mass casualty care, far forward environments, CBRN environments and naval operations. This provides medics with a full life saving capability from patient access in field to hand off at hospital level.

BESPOKE INFLATABLES

RESCUE CUSHIONS

Our patented design inflates in 30 seconds making it ideal for emergency situations and with an improved lifetime of 15 years guaranteed our customers can be confident in our products consistent service. To date over 5,500 units have been sold to a variety of end users including the Berlin Fire Brigade who operates approximately 200 Survitec Jumping Cushions. Four sizes are available which meet approved rescue heights of 16m, 23m, 30m and 40m.

KEY FEATURES

- ✓ An inflatable frame supports an outer cover made from highly durable fabric coated with flame retardant PVC
- ✓ Light-weight, easily storable
- ✓ Easy and safe made of operation
- ✓ Very short recovery time allows multiple rescues / jump in short time
- ✓ Compatible with standard compressed air cylinder



FAST INFLATION TENT

Capable of extensive customisation in design, shape, colour and accessories, this product is extremely versatile making it suitable for a variety of end users. Lightweight with small stowing dimensions the Survitec Fast Inflation Tent is the ideal solution for emergency situations. Used in the past as field hospitals in the short term, military headquarters and refugee accommodation, the Survitec Fast Inflation Tent is a truly adaptable and distinguished product for today's first responder.

KEY FEATURES

- ✓ Custom designs including shape, colour and accessories available
- ✓ Lightweight and compact for handling and storage
- ✓ Available in 3 standard sizes



FAST INFLATION SHOWER

Survitec has designed and manufactured high-grade Fast Inflation Showers to suit every obligation. Our innovative concept incorporates a fast inner over pressure air system which allows no polluted air to enter the unit, enabling first responders to use as a decontamination unit. Used by the Swiss Military, the Fast Inflation Shower can be retracted quickly and be reused immediately if required.

KEY FEATURES

- ✓ Over pressure system to prevent polluted air entering
- ✓ Fast deployment and retraction



MAINTENANCE LIFTING SYSTEM

The Maintenance Lifting System has been designed specifically for vehicles, tanks and aeroplane maintenance. The base fabric is woven to form a frame with the upper and lower surfaces linked by drop threads. When the Maintenance Lifting System is inflated, the drop threads restrict expansion and create a flat slab of even thickness sustainability enhancing the lateral stability of the elevator structure.

KEY FEATURES

- ✓ Oil and fuel resistant
- ✓ Lifting capacity ranging from 220lbs to 132,000lbs
- ✓ Excellent durability in all climatic conditions



EMERGENCY COMMUNICATION

Finding yourself in a distressful environment is not something any of us would like to experience. However, our diverse range of emergency communication can be a vital tool for attracting attention and communicating your intentions to either those on board or other vessels. Our global distribution network supplies a range of quality approved brands to cater for a variety of vessel requirements and to suit your safety needs.



OUR GLOBAL DISTRIBUTION NETWORK SUPPLIES A RANGE OF QUALITY APPROVED BRANDS TO CATER FOR A VARIETY OF VESSEL REQUIREMENTS AND TO SUIT YOUR SAFETY NEEDS.

MCMURDO ELECTRONICS RANGE

McMurdo, a division of Orolia, is the global leader in emergency readiness and response including search and rescue and maritime domain awareness solutions.

At the core of these solutions are resilient positioning, navigation and tracking products, technologies and systems that have helped to save over 37,000 lives since 1982.

KEY PRODUCTS



Smartfind EPIRBS



S4 Rescue SART



Smartfind S10 & S20 AIS



R5 GMDSS VHF Handheld Radio



Grab Bags



PAINS WESSEX PYROTECHNICS RANGE

Pains Wessex have been a leading supplier of marine distress signals for over 100 years. When you specify lifesaving equipment for your vessel, you need to know beyond any doubt that it is the most reliable and cost-effective available. With Pains Wessex advanced pyrotechnic marine distress signals, you can be sure you have made the right choice.

PYROTECHNICS
CAN BE PURCHASED
AS INDIVIDUAL UNITS
OR IN PACKS INCLUDING;
LIFEBOAT DISTRESS, SHIPS
BRIDGE, OFFSHORE,
COASTAL AND INSHORE
PACKS.

KEY PRODUCTS

- ✓ Line Thrower Units - Line Thrower Body Inc. Line and Line Thrower Rocket
- ✓ Man-overboard MK9
- ✓ Parachute Red Rocket MK8A
- ✓ Red Handflare MK8
- ✓ Lifesmoke MK9
- ✓ Handsmoke MK8A
- ✓ Buoy smoke MK9
- ✓ Parachute Illuminating Rocket MK8A
- ✓ White Handflare MK8
- ✓ Day & Night Distress Signal MK8
- ✓ Personal Distress Signal Kits
- ✓ Poly Bottles & Grab Bags

LIFERAFTS

Within our liferaft portfolio we offer some of the most trusted brands available including, RFD, SurvitecZodiac and DSB. Every brand shares the same key focus, ensuring Survitec offer customers longevity, quality and manufacturing excellence.

As the world-leader in critical safety and survival solutions, you can be assured of dealing with a robust, reliable and sustainable organisation that is equipped and experienced to handle your liferaft needs with minimum fuss. We can equip your organisation with its liferaft needs through product supply or a rental agreement.

In addition, we offer unmatched after-market solutions including the largest service network available - helping to ensure your equipment receives only the very best care and attention throughout its entire safety lifecycle. We are also able to provide liferaft crew training, enabling your crew to be able to efficiently deploy the raft in an emergency.



IN AN EMERGENCY, HAVING THE CORRECT LIFERAFT CAN MAKE A SIGNIFICANT DIFFERENCE. OUR LIFERAFT RANGE INCLUDES;

- ✓ Throw-over liferafts
- ✓ Davit launch liferafts
- ✓ Self-righting liferafts
- ✓ Fully reversible liferafts
- ✓ Means of Rescue (MOR)
- ✓ Air droppable liferafts
- ✓ Polar Code liferaft solutions

“

HELPING TO ENSURE YOUR EQUIPMENT RECEIVES ONLY THE VERY BEST CARE AND ATTENTION THROUGHOUT ITS ENTIRE SAFETY LIFECYCLE.

LIFERAFT RENTAL

OUR RENTAL AND EXCHANGE CONCEPT, LAUNCHED IN 2008, CHANGED THE LIFERAFT MARKET FOREVER.

Offering a variety of Survitec throw overboard and davit launch Extended Service Rafts – 30 months' service intervals are available. All our rental rafts are type and class approved, certificated and ready to use. Our staff around the world work hard to ensure your rafts are ready and where they need to be, when they need to be.

A SIMPLE, SEAMLESS CHANGEOVER

- ✓ No waiting
- ✓ No interim loan rafts
- ✓ No local repairs needed
- ✓ No on-board assessments
- ✓ No extra costs
- ✓ No complex agreements



AIR DROPPABLE LIFERAFTS

When an aircraft ditches and the crew and passengers have a matter of seconds to make a decision, it is crucial they are equipped with the very best in lifesaving equipment. In order to improve chances of survival, a liferaft must be designed to incorporate every element specific to an aircraft emergency situation.

Users can select from two types of market leading SAR Liferafts, the unique Heliraft and the popular Aerolite. This presents a wide choice of capabilities for SAR operations, including military, coastguard, offshore oil industry, commercial aviation and civilian emergency situations.

KEY FEATURES

- ✓ Universally adaptable, configured for use on virtually any rotary or fixed wing aircraft.



LIFERAFT SERVICING

See page 38 for our extensive liferaft servicing capabilities

HEIGHT SAFETY

We offer an extensive range of height safety products and services. As approved suppliers and service agents for the leading brands of fall protection equipment, you can trust our knowledge and expertise to help you select the best products on the market today.

PERSONAL FALL PROTECTION EQUIPMENT

- Anchors Points
- Full Body Harnesses
- Arrest & Restraint Lanyards
- Life Line Systems
- Positioning systems
- Ladder Climb Systems
- Inertia Reels (Arrest & Recovery)
- Rescue Devices
- PPE
- Mobile Tripods & Posts
- Confined Space Access/Rescue

OUR SUPPLIERS INCLUDE

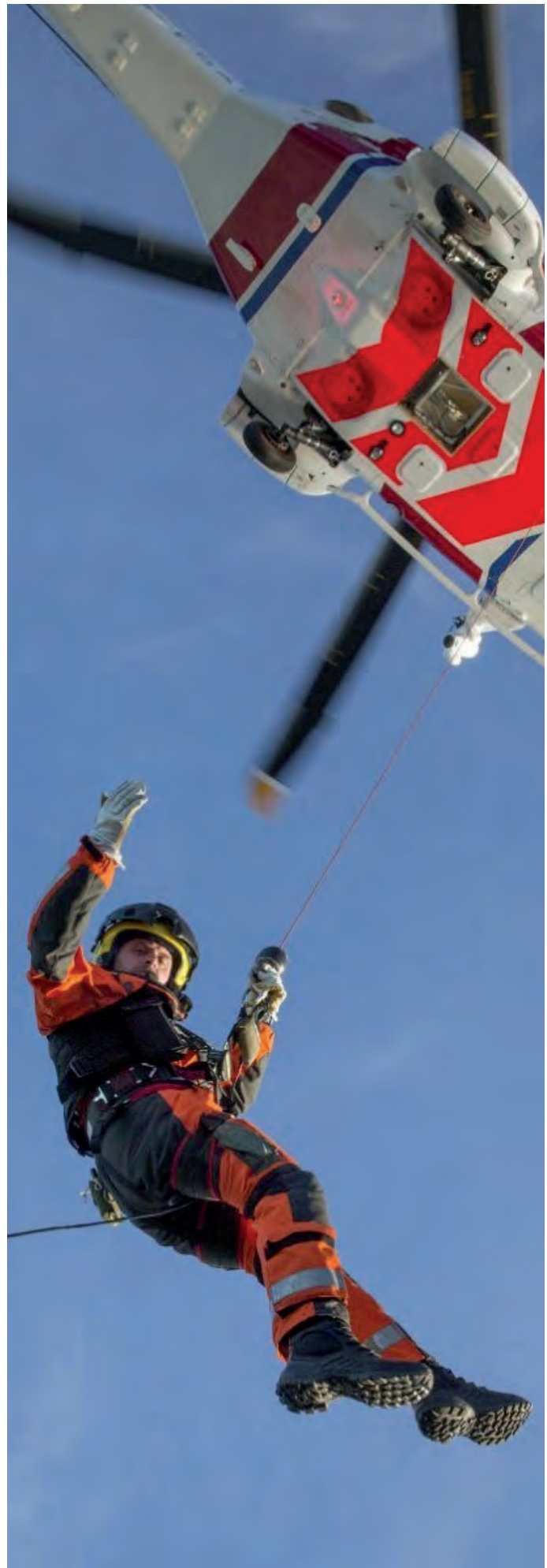
- Capital Safety / Sala
- Latchways
- Ridge Gear
- Tractel
- Miller
- Skylotec
- Petzl

RESCUE SYSTEMS

- Evacuation systems
- Self rescue systems
- Assisted rescue systems
- Stretchers and associated equipment

INSTALLATION, SERVICING & INSPECTION

- Site Survey
- System Installation
- Service, Maintenance, Repair
- Fixed System Inspections
- PPE Inspection
- Climbing Equipment Inspection
- Hire Options



ROPE

Survitec can supply a wide range of rope products to the Emergency Services for both inland and offshore rescue.

Key rescue organisations such as the RNLI, MCA, fire & rescue authorities and police have all chosen Survitec as their supplier of choice.

Additionally, our capabilities also extend to visual inspection and destructive testing.

KEY PRODUCTS

- Staple-spun polypropylene
- Heat-resistant Kevlar
- Nylon and polyester braided climbing rope
- Dyneema and nylon towing lines
- Elastic shock cord
- Natural fibre ropes



TOOLING AND HYDRAULICS

Survitec is a major supplier of power tools to emergency services teams worldwide. It distributes, services and repairs hydraulic, pneumatic, electric and battery-powered rescue tools that can be purchased outright or hired.

VERTICAL LIFTING WINCHES

Designed to extricate victims of road traffic accidents by spreading vehicle structures open, Survitec's hydraulic vertical lifting wedge has huge lifting force, even in extremely small access gaps.

HORIZONTAL LIFTING WEDGES

Compatible with Enerpac's RC series of ten-tonne hydraulic cylinders, the single-acting, spring return WR series of horizontal lifting wedges are extremely capable in very confined work areas.

SAWS

Survitec supplies and services handheld circular and sabre power saws, including cordless ranges manufactured by Metabo and Trumf Tooling. All power saw products have a manufacturer's warranty.

LIGHTING

Survitec's cordless battery-powered site lighting equipment is ideal for emergency operations, providing uniform LED illumination in large working areas for up to seven hours when fully charged.

SERVICE & REPAIR

Survitec has in-house expertise to service and repair a vast range of tools and as well as provide advice and guidance on a range of health and safety issues. All tools supplied by Survitec carry relevant certification from Hand Arm Vibration Syndrome to Portable Appliance Testing, where applicable. Survitec is also fully qualified to undertake HAV's testing and tooling audits.





LIFTING AND INSPECTION SERVICES

Survitec's focus is on quality assurance, robust procedures and detailed process controls, while working in partnership with regulatory authorities and understanding compliance. Survitec provides through life management to ensure equipment always operates reliably and safely. Our Lifting Compliance team offers cost effective and bespoke solutions for all lifting requirements from product sales to site survey design and manufacturing. Our engineers are trained to the highest standards and have prerequisite industry qualifications, LEEA based competency portfolios as well as the required NDT/offshore certifications.



SLINGS

Design, Fabrication & Supply of

- Wire Rope Slings
- Chain Slings
- Polyester Round Slings
- Flat Web Slings

Manufactured to customer specifications in accordance with relevant industry standards.

LIFTING APPLIANCES

Supply, Installation & Service of Lifting Appliances across all industry sectors providing innovative lifting solutions through trusted brands.

LIFTING ACCESSORIES & COMPONENTS

Supplying the Global Brand Leaders for

- Shackles
- Master Links
- Hooks
- Lifting Eyes

TESTING

Providing on site testing for Lifting Equipment & Supporting Structures

- Calibrated Load Testing
- Destructive Testing
- Magnetic Particle Inspection
- Dye Pen
- Deflection Testing

CRANE ENGINEERING SERVICES

- Supportive Planned Preventative Maintenance & Reactive
- Engineering Support for Crane Types and Manufacturers
- Installation of new Crane structures
- Fabrication of existing structures to support customer needs

DID YOU KNOW

Survitec also offer hiring Services offer a complete range of lifting, height safety and PPE across the UK and offshore locations



SERVICING & MAINTENANCE

LIFERAFTS, LIFEJACKETS, RESCUE BOATS , SURVIVAL SUITS & FIRE EQUIPMENT



With over 160 years' experience to our name, we ensure your equipment receives only the very best care and attention throughout its entire safety lifecycle.

We are the world leader in the supply, inspection, testing and maintenance of safety and survival equipment. Through our network of 500+ accredited service stations, we offer a truly global service covering over 2,000 ports worldwide.

We have a renowned reputation for reliability of service and workmanship. Our work is always to the highest standard and our technical ability is continuously being upgraded with the latest equipment, facilities and training.

SERVICING CAPABILITY

- ✓ FULL SERVICING SOLUTIONS FOR LIFERAFTS, LIFEJACKETS, RESCUE BOATS , SURVIVAL SUITS & FIRE EQUIPMENT
- ✓ INFLATABLE TUBE AND GLASS FIBRE HULLS REPAIRS FOR RIBS AND RESCUE BOATS
- ✓ TESTING AND REFILLING OF GAS CYLINDERS & FIRE EQUIPMENT
- ✓ EACH SERVICE CERTIFICATE PRINTED WITH A UNIQUE CODE TO RECORD WHERE A SERVICE HAS BEEN CARRIED OUT

SERVICE STATIONS

- ✓ STRATEGICALLY LOCATED SERVICE STATIONS ENSURE MINIMUM DELAY IN THE DELIVERY AND COLLECTION OF EQUIPMENT
- ✓ ALL SURVITEC AND SURVITEC APPROVED SERVICE STATIONS ARE AUDITED AND APPROVED TO THE HIGHEST STANDARDS OF LEGISLATIVE ORGANISATIONS AND GOVERNMENT ASSOCIATIONS AS WELL AS THE PRODUCT ORIGINAL EQUIPMENT MANUFACTURER (OEM)
- ✓ OUR SERVICE STATIONS ARE REQUIRED TO STOCK A QUANTITY OF APPROVED SPARE PARTS
- ✓ ONLY APPROVED AND TRAINED SERVICE ENGINEERS ARE AUTHORISED TO CARRY OUT WORK
- ✓ SERVICE ENGINEERS MUST ATTEND REFRESHER COURSES ONCE EVERY THREE YEARS
- ✓ TRAINING, AUDIT AND CERTIFICATION RECORDS ARE TRACKED THROUGH A GLOBAL SERVICING DATABASE TO MAINTAIN CONSISTENTLY HIGH SERVICING STANDARDS

TRAINING AND CONSULTANCY



DESIGN & CONSULTANCY

NO MATTER HOW LARGE OR SMALL YOUR PROJECT, CONTACT US NOW TO DISCUSS HOW WE CAN HELP

Direct access to our team is ideal if you work in unusual or extreme environments for which off-the-shelf products are a compromise or just not available. Simply brief our designers and they'll work with you to create exactly what you need, whatever the parameters and whatever regulations you must meet. If you're unsure exactly what you need, we have the experience and skills to really make the solution come alive for you.

Our team is also just the job if you want to convey a cohesive image of your brand using our existing product range – perfect for team clothing or equipment. Or you might simply want us to tailor a product to fit your needs – such as changing an existing garment's colour scheme to match your uniform.

We are proud to design and manufacture on site here in the UK. This means we have both the skill and the complete flexibility to respond quickly, precisely and cost effectively to your requirements. Our custom-made service is available for almost any product within our range, and obviously we'll undertake any completely new project for which we have the skills, facilities and expertise.

TRAINING

Safety equipment is becoming ever more technical. Learning how to use and maintain it correctly is an important, but often complicated, process. We therefore offer a complete training service, to ensure you have the correct understanding of the products, so that they can be employed effectively and maintained appropriately. This all helps to prolong the life of your essential equipment, keeping it fit for purpose whenever it is required.

TRAINING ESSENTIALS

WATER RESCUE MAN OVERBOARD DUMMY

The water rescue mannequins of choice for British and US Navies, all UK Fire Services and NATO forces worldwide - these dummies perfectly simulate unconscious casualties in water.

The man overboard model is supplied with bright orange overalls and SOLAS reflective tape on the head and is designed to be as conspicuous as possible.



PAINS WESSEX PYROTECHNIC DUMMIES



Lifesmoke MK9



Handsmoke MK8a



Parachute Red Rocket MK8a



Red Handflare MK8



White Handflare MK8

More flares are available, please contact us for full details.



GET IN TOUCH

SURVITEC

1-5 Beaufort Road, Birkenhead, CH41 1HQ, United Kingdom

Email: info@survitecgroup.com

www.survitecgroup.com

Copyright Notice

The copyright, trademarks, domain names and other intellectual property rights in all material and information in this presentation belongs to Survitec Group Limited. All rights are reserved.

Disclaimer

This document provides general information about Survitec and its companies, its products and services, and summarises general capabilities and offerings which we deem to be of relevance to our customers. Whilst Survitec has taken appropriate steps to ensure the accuracy of the information contained in this document, Survitec gives no warranty regarding the accuracy or completeness of such information.

This presentation was prepared to provide information and does not constitute a contract. Survitec reserves the right, without prior notice, to change, delete, supplement, or otherwise amend at any time the information, images, and offerings contained in this presentation, or other documents. Survitec shall not be liable for any loss or damage of whatever nature (whether direct, indirect, consequential or other) that may arise as a result of any third party relying on the information contained in this document (but nothing in this disclaimer excludes liability for death or personal injury arising from negligence or any fraudulent misrepresentation).

For further detailed information, prices, terms and conditions, customers should contact Survitec at info@survitecgroup.com

Rv1

