



PURE
PERFORMANCE
DECK & MAST
GEAR



KARVER®
sailing experience

20|17
18
ENGLISH CATALOG

V.2



TABLE OF CONTENTS

1 - FURLERS P4/13

KF - FURLERS	P4/7
KSF - TOP DOWN SPINNAKER FURLERS	P8/9
KFX - STRUCTURAL FURLERS	P10/11
KF OPTIONS	P12/13

2 - LOCKS P14/21

KMH – INTERNAL LOCKS	P16
KHL – EXTERNAL LOCKS	P17
KFH – EXTERNAL FURLING LOCKS	P18/19
KHR – REEF LOCKS	P20
KMS – MAINSAIL LOCKS	P21

3 - BLOCKS & SHEAVES P22/35

KBO – UNIVERSAL LASHING BLOCKS	P24/25
KBO – SPECIAL BLOCKS & SOFT SHACKLES	P26/27
KB – ROUND BLOCKS	P28
KBR C – HIGH LOAD CARBON BLOCKS	P29/31
KBR A – HIGH LOAD ALUMINUM & SNATCH BLOCKS	P32
KBR M – HIGH LOAD STAINLESS STEEL BLOCKS	P33
KDS & KDSB – SHEAVES & SHEAVE BOXES	P34
KRTI – TITANIUM RINGS	P35

4 - DECK EQUIPMENTS/JAMMERS P36/43

KJ & KJP – HIGH LOAD JAMMERS	P38/39
KW – WINCHLESS	P40
KJ2/3 & KSC – CAM CLEATS & BASES	P40/41
KJH – JAWS HANDLES	P41
KORG – HIGH LOAD ORGANIZERS	P42
KOMINO & KSO – ORGANIZERS	P43

5 - MAST TRACKS & CARS P44/54

KMS 30	P48
KMS 40	P49
KMS 60	P50/51
KMS 80	P52/53
KMS 100	P54

OUR MARKETS



CRUISING

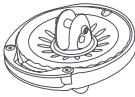


RACING



SUPER YACHT

PRODUCT LINES



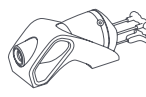
FURLERS



LOCKS



BLOCKS



JAMMERS



TRACKS & CARS

OBSSESSIONS



MESSAGE FROM CEO

Due to our capacity to innovate and provide custom solutions in a short time frame, we work with the greatest names in the sailing industry and are onboard the most prestigious yachts.

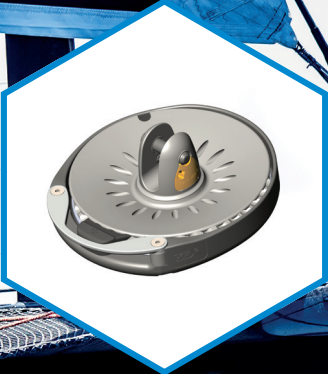
Equipment requirements are typically the same on Maxi-yachts, foiling catamarans or production boats: difficulties to hoisting the main sail, to dousing a spinnaker, to avoid halyard stretching...

It is still a hands-on experience, but one that provides you with more comfort, safety and performance to better enjoy your time at sea.

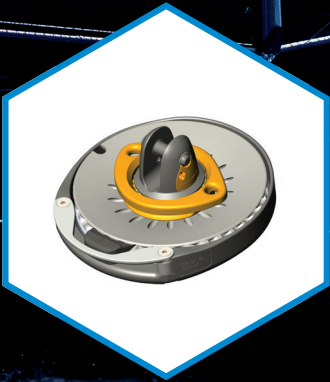
Happy sailing!



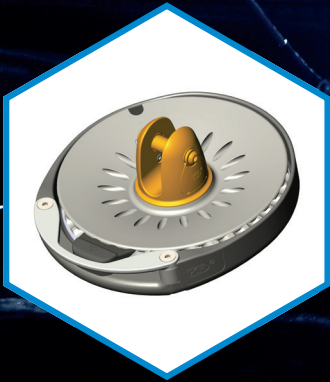
Furlers make handling the sail easier thus improving your boat's performance



KF
FURLERS



KSF
TOP DOWN SPINNAKER FURLERS



KFx
STRUCTURAL FURLERS

WHY CHOOSE A FLYING FURLER?

- The furler is a light and removable system that quickly launches the foresails on your sailboat. Free flying sails come as an addition to your genoa to always fly the best sail depending on the wind and boat direction.
- A furled sail is easier to handle and can be readily stored below out of the way.
- The same furler can usually be used for several types of sails: gennakers, stormsails, staysails and more recently on asymmetrical spinnakers.

8 reasons to choose a Karver furler



► UNIQUE DRUM LOCKING MECHANISM

FURLING: Pull on the endless line to furl (If you accidentally release the furling line the mechanism locks automatically).

UNFURLING: To unlock the drum, just tug a little on the line in the same direction that the sail was furled which releases the lock and enables the sail to unfurl.



► QUICK USE CAPTIVE PINS

Quick fit mechanism to connect the cable to the furler swivel and drum.
The furler drum is provided with a snap shackle up to and including KF5. HR shackle is standard on the swivel up to and including KF5.



► EXTREMELY LIGHT AND COMPACT

Our range is 35% lighter and more compact than the competition. Light weight swivels lower the impact on the mast.

More compact means more sail area!



► COMPOSITE SPOOL

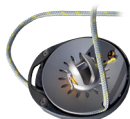
Unlike metallic drums, the composite spool around the drum is shock absorbent and protects the drum, the sail and the deck from impact.



► SUPER LOW FRICTION BEARINGS

KF range low friction bearings have been specifically designed for our furlers with high tech materials.

Furling has never been easier.



► CONTINUOUS LINE INSTALLATION

Easy and quick engagement of the continuous line requires no tools.

Karver invented the concept where the endless line is installed within seconds and stays secured on the drum.



► DRUM LOCKING MECHANISM *

The mechanism is reliable and installed with a fuse. If the maximum load is exceeded, the mechanism unlocks automatically. The drum then works like a traditional continuous line furler.

The locking mechanism can be removed at anytime if the lock is not required.



► CUSTOM

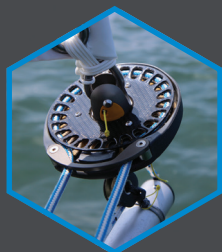
One of our strengths is our capacity to customize our product in a short time frame at a reasonable cost to suit your specific needs.

BOAT LENGTH	STORM SAIL / STAYSAILS	CODE 0	GENNAKER	ASY SPINNAKER
Max 26'	KF1	KF1	KF1	KSF1
Max 39'	KF2	KF2	KF1	KSF2
Max 48'	KF5	KF5	KF2	KSF5
Max 65'	KF8	KF8	KF5	KSF8
Max 85'	KF12	KF12	KF8	KSF12
> 85'	Call us			

Furler recommendations.

Furler model depends on boat size or weight, sail area, navigation programs.

For further information or in case of doubt, please contact us. *(patented)



FURLERS

PURE SIMPLICITY!

Whether you're cruising or racing, Karver KF Furlers will make handling the sails easier for you!



+SAFETY FEATURES

- Locking mechanism of the drum from the cockpit (Patented).
- Breaking load over twice the safe working load.
- Swivel lightness decreases impact on the mast when hoisting/lowering the sail.

+EFFICIENCY

- Quick fitting mechanism for the sail.
- Quick fitting mechanism to the deck and halyard.
- Fast and captive pins.
- Quick engagement of the continuous line

+ERGONOMICS

- Composite spool around the drum to protect the drum, the sail and the deck from impact.
- Closed structure of the drum prevents fingers from getting caught during the process.

+PERFORMANCE

- Extremely light.
- Unequally compact.
- Low friction bearings.



Available for 20 feet cruisers up to 150 feet Super Yachts. KF furlers feature Karver's unique drum locking mechanism which operates from the safety of the cockpit.



© Hugo BOSS.

EXTREME RACING OR PEACEFUL CRUISING, YOU CAN NOW MAKE HANDLING SAILS SAFER!



© Wally - Wally Nano



© Stefani Gaspari - Initiatives-cœur

MODEL	PART NUMBER*	SWL (T)	WEIGHT (Kg)	DRUM DIAMETER (mm)	CUTTING LENGTH (mm)
YACHTS					
KF1	PF100000	1.5	0.497	110	149.50
KF2	PF090000	2.5	0.900	150	194.00
KF5	PF080000	5	1.570	175	252.30
KF8	PF110000	8	2.200	210	186.80
KF10	PF030000 [10]	10	3.087	210/300**	198.40
KF12	PF030000	12	2.300	210/300**	215.60
SUPER YACHTS					
KF16	PF030000 [16]	16	-	-	-
KF20	PF010000	20	-	-	-
KF25	PF270000	25	-	-	-
KF30	PF880000	30	-	-	-

* Each reference includes a drum and a swivel. ** Upgrade.
See the OPTIONS pages for other characteristics & other available configurations

In the box



▶ Drum with its fitting



▶ Swivel with its fitting



▶ Neoprene protection



▶ Lock and spare lock



▶ User manual



▶ Storage bag



SPINNAKER FURLERS FURL YOUR SPINNAKER!

KSF top down furler is READY TO HOIST IN SECONDS!



+SAFETY

- Furling can be safely done single handed from the cockpit!

+PERFORMANCE

- The tack line can be adjusted from the cockpit to finetune the spinnaker position.

+UNIVERSAL

- The same furler can be interchanged to use with the full inventory of sails: code sail, staysail, or asymmetrical spinnaker.

+LIGHT WEIGHT

- The only piece added compared to a standard KF drum is the independent swivel on the top which helps keep the system light.



Unlike traditional code sail furling, spinnaker furling starts from the top of the sail.

The tack swivel on KSF furler makes sure the furling is safe and does not damage the spinnaker.

MODEL	PART NUMBER*	SWL (T)	TACK SWIVEL SWL (T)	WEIGHT (Kg)	DRUM DIAMETER (mm)	CUTTING LENGTH (mm)	ANTI TORSION (mm)
YACHTS							
KSF1	PF100000 [SPI]	1,5	0,5	0,582	110	166,88	9
KSF2	PF090000 [SPI]	2,5	1	0,950	150	209,90	13
KSF5	PF080000 [SPI]	5	1,5	1,985	175	264,25	15
KSF8	PF110000 [SPI]	8	3	2,690	210	197,15	x
KSF8 R	PF110000 [SPIRE]	8	6	3,250	210	196,70	x
KSF10	PF030000 [SPI10]	10	6	4,122	210/300**	212,40	x
KSF12	PF030000 [SPI]	12	10	2,950	210/300**	222,80	x

* Each reference includes a drum and a swivel. ** Option. See the OPTIONS pages for other characteristics & other available configurations.

MODEL	PART NUMBER	SWL (T)
SUPER YACHTS		
KSF16	PF030000 [SPI16]	16
KSF20	PF030000 [SPI20]	20
KSF25	PF270000 [SPI]	25
KSF30	PF880000 [SPI]	30



© Karver Systems

When ordering one of our KSF packages, you will own every component (but the sail) to use your asymmetrical spinnaker: the furler drum and swivel + the furling line featuring a block + an anti-torsion cable with clamps to adjust it to the right length.

MODEL	PART NUMBER	SWL (T)	TACK SWIVEL SWL (T)	AT DIAMETER (mm)	AT LENGTH (mm)	FURLING LINE LENGTH (m)
PACK KSF1	PF100000 [SPIPAC]	1,5	0,5	9	16	2 x 8 m
PACK KSF2	PF090000 [SPIPAC]	2,5	1,0	13	20	2 x 10 m
PACK KSF5	PF080000 [SPIPAC]	5	1,5	15	26	2 x 13 m

? HOW DOES IT WORK?

Free flying sail furler

- Anti-torsion cable is sewn inside the sail luff.
- The tack and the head of the sail are attached with a lashing to the anti-torsion cable (thimbles).
- The sail starts furling from the bottom (like a jib furler).



Top down furlers

- KF standard furler, which features a tack swivel on top of the drum.
- The tack of the spinnaker is attached to the tack swivel. The head of the sail is attached to the anti-torsion cable (thimbles).



- The anti-torsion cable is separated from the sail luff.
- The anti-torsion cable transfers the torque from the drum to the top swivel. This is an essential part of a good furling process.
- The sail starts furling from the top downward.



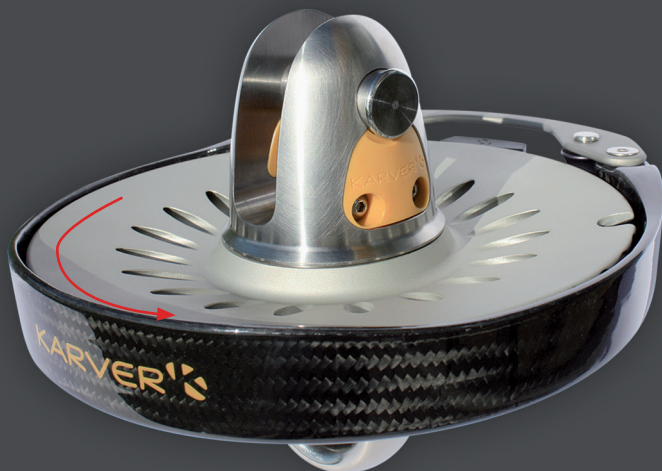
STRUCTURAL FURLERS HIGH TECHNOLOGY!

Underneath its sleek exterior lies
a wealth of technology.



+KARVER ADVANTAGES

- Most compact system.
- Lightweight.
- Locking mechanism from the cockpit.
- Low friction bearing.
- Carbon fibre spool available.



Installed for 10 years on ocean racing yachts.
KFX structural furlers are the perfect balance
of performance and safety.

Installed with a structural anti-torsion stay,
it replaces a traditional forestay or inner stay.

The latest Karver furling showcases:

- 8 months of Research & Development.
- Hundreds of numerical simulations.
- Dozens of prototypes.
- Many tests on various bearing types
(ceramic, titanium, beryllium bronze, HR steel, etc.).

The result is a line of furling units that are compact,
light and offer the best performance and ease of use.
Karver is proud to be the benchmark in this category
and is still unmatched by its competitors.

Our range of furling systems fit boats from 6 to 90 meters.

References: Ultim Macif, Prince de Bretagne, Actual, HH, APC78,
Imoca, Class 40, Swan50...

KFx¹²

WORKING
LOAD
12T

WEIGHT
1960g!



KFX Packages

MODEL	SWL (T)	PART NUMBER
KFX1	1,5	PF100000 [STRUCT]
KFX2	2,5	PF090000 [STRUCT]
KFX5	5	PF080000 [STRUCT]

Halyard swivel option

PART NUMBER	MAX STAY DIAMETER (mm)
PF100020 [ETARQ]	6.5
PF090020 [ETARQ]	10.5
PF080020 [ETARQ]	15.5

KFX without fitting

MODEL	SWL (T)	KFX STD CONTINUOUS LINE	KFX SINGLE LINE	KFX CONT. FOR SCREW STAY	SINGLE LINE FOR SCREW STAY	KHL LINK OPTION
-------	---------	-------------------------	-----------------	--------------------------	----------------------------	-----------------

YACHTS

KFX2	2.5	X	N/A	N/A	N/A	PF094026
KFX5	5	PF080000 [XCL]	PF080000 [XSL]	PF080000 [XCLN]	PF080000 [XSLN]	PF084428
KFX8	8	PF110000 [XCL]	PF110000 [XSL]	PF110000 [XCLN]	PF110000 [XSLN]	PF110600
KFX10	10	PF030000 [X10CL]	PF030000 [X10SL]	PF030000 [X10CLN]	PF030000 [X10SLN]	PF030600
KFX12	12	PF030000 [X12CL]	PF030000 [X12SL]	PF030000 [X12CLN]	PF030000 [X12SLN]	PF030600

SUPER YACHTS

KFX16	16	PF030000 [X16CL]	PF030000 [X16SL]	PF030000 [X16CLN]	PF030000 [X16SLN]	PF033962
KFX20	20	PF030000 [X20CL]	PF030000 [X20SL]	PF030000 [X20CLN]	PF030000 [X20SLN]	PF034850
KFX25	25	PF270000 [X25CL]	PF270000 [X25SL]	PF270000 [X25CLN]	PF270000 [X25SLN]	PF273762
KFX30	30	PF013000 [X30CL]	PF013000 [X30SL]	PF013000 [X30CLN]	PF013000 [X30SLN]	PF273762

We have developed two ways to hoist and lower the genoa on a structural furler: a halyard swivel sliding on your stay or a halyard lock connected to the top swivel.



► Halyard swivel



► KHL swivel link



**Compared to a reefing furler,
a structural continuous line furler
is about 8 times lighter!**

Description	KF1	KF2	KF5	KF8	KF10	KF12
STANDARD PRODUCT INFORMATION						
Swivel fitting	Shackle	Shackle	Shackle	Lashing eye	Lashing eye	Lashing eye
Drum fitting	Snap shackle	Snap shackle	Snap shackle	Lashing eye	Lashing eye	Lashing eye
Furler drum diameter (mm)	110	150	175	210	210	210
Furling line diameter (mm)	6	8	10	10	10	10
Drum lock provided (1 + 1 spare)	PF090050	PF090050	PF080070	PF080070	PF080070	PF080070
Neoprene swivel protection	PL104409	PL094410	PL084411	PL114412	PL034413	PL034413
Storage bag & manual	PL604047	PL604047	PL604047	PL604131	PL604131	PL604131
Fork pin diameter (mm)	8	10	12	14	18	20
Fork pin width (mm)	11	18	20	24	22	22
COMMON OPTIONS						
Aluminum thimble x 1	PF103776	PF090410	PF080050	PF110050	PF033070	PF034742
3:1 friction sheave with captive & fast pin	PF104699	PF094395	PF084227	PF114226	PF034787	PF034787
2:1 removable block	PF100030	PF090030	PF080030	PF110030 [ALU]	Custom	Custom
2:1 fixed block	-	-	-	-	PF030030	PF030030
Spinnaker "tack swivel" adaptor	PF100021	PF090021	PF080021	PF110021	PF030021 [10]	PF030021
Ready to use furling line [Diameter Length]	PF101231 [D6L16]	PF091232 [D8L20]	PF081233 [D10L26]	PF081233 [D10L32]	PF081233 [D10L42]	PF081233 [D10L50]
Custom length furling line	MP101231	MP091232	MP081233	MP081233	MP081233	MP081233
Anti torsion line (ready to use at your length)	CABLE [KSF1]	CABLE [KSF2]	CABLE [KSF5]	-	-	-
Anti torsion line only	CABLE [M9]	CABLE [M13]	CABLE [M15]	-	-	-
Karver clamp	PF104710	PF094806	PF084921	N/A	N/A	N/A

KF/KSF/KFX OPTIONS: CUSTOMIZE YOUR FURLER!



► THIMBLES



► 3 :1/2:1 FRICTION SHEAVES



► 2 :1 BLOCKS



► SPINNAKER TACK SWIVELS
TOP DOWN ADAPTOR

NEW



► FURLING LINES



► ANTI TORSION LINE

Description	KF1	KF2	KF5	KF8	KF10	KF12
OTHER OPTIONS						
300 mm drum	N/A	N/A	N/A	PF114816	PF114816	PF114816
Carbon furler wheel (despite aluminum)	PF104851	PF094140	PF084819	PF114820	PF114820	PF114820
Continuous line carbon drum	N/A	N/A	N/A	PL032579	PL032579	PL032579
Carbon drum modification for drum locking	N/A	N/A	N/A	PF030050	PF030050	PF030050
Single line drum option	N/A	PF091484	PF080000 [SLC]	PF030000 [SL]	PF030000 [SL]	PF030000 [SL]
Inversed fixed fork + captive fast pin	N/A	N/A	PF084852	PF114825	PF034824	PF034752
Tack straping thimble (tack)	N/A	N/A	PL084855	PL114818	PL033563 [10]	PL033563
3:1 friction sheave HR design	Custom	PF091592	PF081095	PF110452	PF030396	PF030396
Removable Tylaska snap shackle	N/A	N/A	PF082055	PF114525	N/A	N/A
Lashing pin	N/A	N/A	PF081569	PF114436	PF033065	PF030053
MX shackle	MP104043	MP094044	MP084045	N/A	N/A	N/A
2:1 High Load friction sheave	Custom	PF091590	PF080812	PF110995	Custom	Custom
Lashing eye	Custom	Custom	PL080440	STD	STD	STD
Fixed Tylaska snap shackle	N/A	N/A	PF080040 [TY]	PF110040 [TY]	-	-
High Load stop	N/A	N/A	PF084853 [SS]	PF110040 [SS]	PF030040 [SS]	PF030040 [SS]
Leather upgrade	PF104940	PF094941	PF084942	PF114943	PF114943	PF114943



NEW

► CARBON WHEEL



► CARBON DRUM



NEW

► LEATHER DRUM



► SINGLE LINE



► STRAPING TACK THIMBLE



► 3 : 1 WIDE HR



► INVersed FORK



► TYLASKA

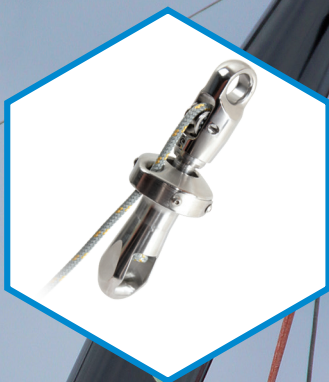


► HIGH LOAD STOP



KMH

INTERNAL HALYARD LOCK



KHL

HALYARD LOCK



KFH

FURLING LOCK



KMS

HEADBOARD CAR LOCK



KHR

REEF LOCK

KARVER: THE LOCKING SPECIALIST

KARVER[®]PEDIA

Choosing the right sailing hardware can improve your boat's performance. The latest equipment is lighter, takes less room and is more efficient – it is now able to block and hook heavy loads.

Every lock mechanism aims to incorporate these benefits by replacing ropes with mechanical devices.

Today's fabrics are more and more advanced (3DL, Titanium, Laminated...) to help reduce the overall weight of the sail and maintain its shape thus minimising power loss due to its distortion. To benefit from the power of this type of sail, it is important to minimize the possible stretch of the lines. Installing a lock, regardless of the brand and technology, makes it possible to avoid a halyard stretch thus releasing the full power of the sails.

Besides this mechanical concept, the diameter of the halyard can be reduced as it no longer carries the load of the sail when sailing. For example, a 12mm halyard in Dyneema[®] could be replaced by a 6mm halyard.

Jammers and their weaknesses (line slipping, wear & tear and maintenance), become ineffective. For a 50 ft boat featuring a 65 ft mast, a weight aloft of 15kg would need to be balanced by several hundred kilos in the keel to ensure the same stability!

The installation of a halyard lock reduces the compression in the mast, as the halyard is no longer strained. For high performance sailing yachts, locks may help reduce the weight aloft as rigs can be designed to bear minimal compression.

It would be a mistake to think that these advantages are only for the racing scene. A gain in weight aloft results in better boat stability by decreasing the pitching and rolling in heavy weather conditions in all types of boats. Wouldn't you appreciate getting ashore a few hours or days earlier, without worrying about damage to the halyards?

Our locking solutions:

100% of the Imoca fleet use at least one of our locking devices.
78% use our KFH and furlers.





INTERNAL HALYARD LOCK FOR HEADSAILS REMOVABLE LOCKING MECHANISM

Easy maintenance.



+KARVER

ADVANTAGES

- Reliability : Same lock as our proven at sea KFH.
- Security : Easy access. The locking mechanism can be removed from the bracket with no tool.
- No trip line.
- No lock stop bullet.
- Choose the cap color !



NEW



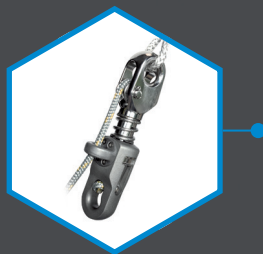
The KMH internal halyard lock is a locking device for headsail installed by mast manufacturers.

This mechanism is integrated into the mast and allows maximum luff length

© Karver Systems

MODEL	PART NUMBER	SWL (T)	WEIGHT (kg)	MAX SPACE* (mm)	BEST LINE** (mm)	MAST CUT (mm)
YACHTS						
KMH5	PF370005	5	1.030	9.5	6	44 x 125
KMH8	PF370008	8	1.800	10.5	8	56 x 156
KMH10	PF370010	10	2.400	10.5	8	75 x 175
KMH15	PF370015	15	3.200	14.5	10	83 x 204
SUPER YACHTS						
KMH20	PF370020	20	-	-	-	-
KMH30	PF370030	30	-	-	-	-
KMH40	PF370040	40	-	-	-	-
KMH50	PF370050	50	-	-	-	-

* Maximum available space. ** Best halyard diameter before splicing



EXTERNAL HALYARD LOCK (NO SWIVELLING FEATURE) MULTIPLE APPLICATIONS

The KHL external lock is an easy to install lock for headsails.



+KARVER

ADVANTAGES

- Compact & Light.
- Essential for Racing yachts, Super Yachts AND cruising yachts.
- No trip line, no lock strop bullet .
- Perfect to lock a spinnaker snuffer during a long navigation.



No more tension in the halyard, avoids wear and stretches for more safety, less weight and more performance.

MODEL	PART NUMBER	SWL (T)	WEIGHT (Kg)	HEIGHT (mm)	MAX SPACE* (mm)	BEST LINE** (mm)
YACHTS						
KHL2	PF480020 [KHL]	2	0.435	117.7	7.5	6
KHL5	PF470020 [KHL]	5	0.850	172.2	9.5	6
KHL8	PF410020 [KHL]	8	0.620	166.3	9.5	6
KHL10	PF400020 [KHL]	10	2.090	217.7	11.0	8
KHL12	PF400020 [KHL12]	12	1.550	217.7	11.0	8
SUPER YACHTS						
KHL16	PF400020 [KHL16]	16	-	-	-	-
KHL20	PF400020 [KHL20]	20	-	-	-	-
KHL25	PF570020 [KHL25]	25	-	-	-	-
KHL30	PF440030	30	-	-	-	-

* Maximum available space.

** Best halyard diameter before splicing



FURLING LOCKS SWIVEL IMPROVE PERFORMANCE

The KFH halyard locks have been tried and tested for many years in the world's toughest oceans.

KFH

+SAFETY

- Once locked, the halyard is not tensioned anymore. The compression in the mast is halved and halyard wear is minimised.

+LIGHTWEIGHT

- The luff is pulled from the bottom of the drum with a block, eliminating the need for a 2:1 halyard set up. It is also possible to use a smaller and lighter halyard as it carries only the weight of the sail.

+SIMPLICITY

- Once unlocked only the lightest part of the mechanism stays on the top of the mast, the furling-lock is on deck leaving no moving parts aloft, making it easy to maintain.



Halyard stretch is a major factor in the loss of performance in upwind sails.

The KFH eliminates stretch and creep ensuring your halyard is at perfect hoist everytime and also reduces mast compression.

The KFH combines a lock and a swivel to be used with a furling drum.

Application examples

CODE SAILS/LIGHT GENOA:

As most standard sailing yachts do not include a mast equipped with 2:1 halyard purchase for foresails, it is easier to have a powerful code sail or light genoa using an accurate setting.

STAYSAIL:

A better solution than a fixed furler. The sail can be furled and easily stored, leaving the foredeck uncluttered and the genoa free to tack. Upwind performance is unaffected.



? HOW DOES IT WORK?

1 To lock:

pull the halyard to max hoist.
The furling-lock becomes
a standard top swivel: Just
unfurl and enjoy your sail.

2 To unlock:

simply pull on the halyard
again to max hoist. The sail
can now be lowered.



MODEL	PART NUMBER	SWL (T)	WEIGHT (Kg)	HEIGHT (mm)	MAX SPACE* (mm)	BEST LINE** (mm)
YACHTS						
KFH1	PF550020 [KFH]	1.5	0.160	107.2	5	5
KFH2	PF480020 [KFH]	2.5	0.700	149.5	8	8
KFH5	PF470020	5	0.920	166.8	9.5	6
KFH6	PF410020 [KFH6]	6	0.896	166.2	9.5	6
KFH8	PF410020	8	1.046	172.5	9.5	6
KFH10	PF390020	10	2.230	218.4	11	8
KFH12	PF400020	12	2.230	218.4	11	8

SUPER YACHTS		
KFH14	PF400020 [14]	14
KFH16	PF400020 [16]	16
KFH20	PF440020	20
KFH25	PF1060020 [25]	25
KFH30	PF1060020	30

The KFH+ or the KSFH+ packages include a drum
+ a 3:1 friction sheave
+ a KFH furling lock despite the standard swivel.

MODEL	REF KFH+	REF KSFH+
KFH1	PF550000	PF550000 [KSF]
KFH2	PF480000	PF480000 [KSF]
KFH5	PF470000	PF470000 [KSF]
KFH8	PF410000	PF410000 [KSF]
KFH10	PF400000 [10]	PF400000 [KSF10]
KFH12	PF400000	PF400000 [KSF]



* Maximum available space.

** Best halyard diameter before splicing.

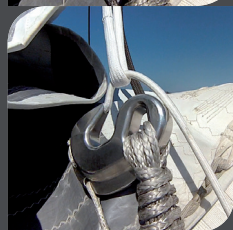


REEF LOCK

NO MORE BREAKING REEF LINES

A complete line of reefing locks for cruising, racing and Super Yachts.

KHR

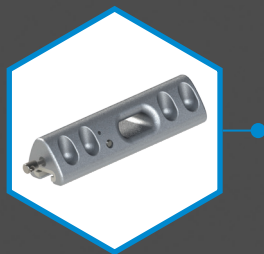


Originally designed and installed onboard the Orma's, reef locks have become popular in the cruising and Super Yacht scene to solve common problems (overload, many friction points, or slipping jammers).

These locks make it lighter due to a reduction of dunnage and avoid reef line stretch.

MODEL	PART NUMBER	SWL (T)	WEIGHT (Kg)	MAX SPACE (mm)	BEST LINE (mm)	MAX LOOP* (mm)	MATERIAL
YACHTS							
KHR2	PF0263125	2	0.188	6.2	5.50	19	ALU
KHR4	PF0263440	4	0.299	9	7	20	ALU
KHR5	PF0263414	5	0.488	10	6	24	ALU
KHR8	PF0264562	8	0.660	11.2	7	24	ALU
KHR10	PF0263222	10	0.834	10	6	20	ALU
KHR6+	PF0263440 [INOX]	6	0.884	9	7	20	STAIN. STEEL
KHR8+	PF0263414 [INOX]	8	1.442	10	8	24	STAIN. STEEL
KHR12+	PF0264022 [INOX]	12	1.200	10	8	28	STAIN. STEEL
SUPER YACHTS							
KHR15+	PF0263388	18	-	-	-	-	STAIN. STEEL
KHR20+	PF0264856 [INOX]	20	-	-	-	-	STAIN. STEEL
KHR25+	PF0264857 [INOX]	25	-	-	-	-	STAIN. STEEL
KHR30+	PF0264858 [INOX]	30	-	-	-	-	STAIN. STEEL

All models can be ordered in titanium. * Max high load loop (not provided) to install on the mainsail leech (1 on each reefing eye).



KMS MAINSAIL LOCKING HEADBOARD CAR

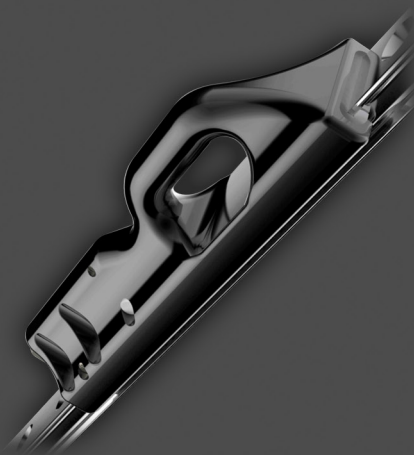
USED BY RACERS FOR OVER FIFTEEN YEARS



+KARVER

ADVANTAGES

- Compact & Light.
- External and /or internal remote.

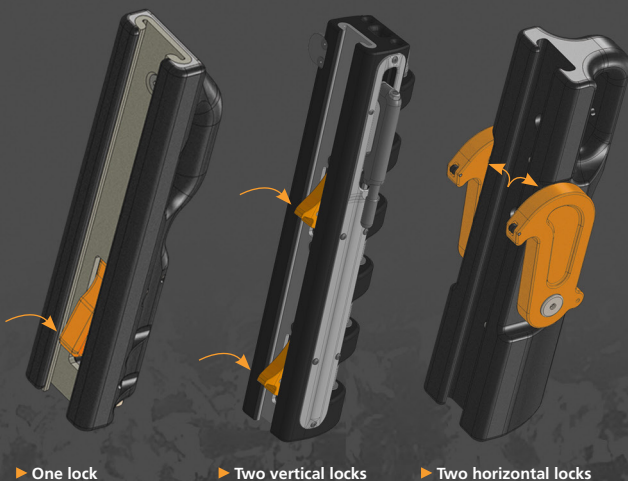


Locking a mainsail is a common solution on many racing yachts, Super Yachts, and cruising yachts.

LOCKING TECHNOLOGIES

We supply a headboard car featuring a lock for the whole KMS product line (except KMS30). Depending on the load requirements and the yacht size, the "locking system" would be activated with one or two inserts (in red) into the track or with two hooks on the side for the bigger units.

References and characteristics available in the KMS section (p44/54).



► One lock

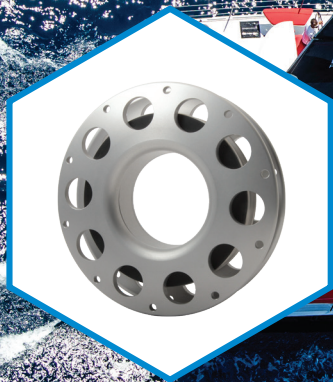
► Two vertical locks

► Two horizontal locks

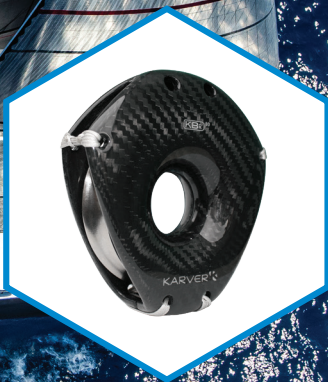
Lashing blocks fast attachment for performance and safety!



ROPE LASHING BLOCKS

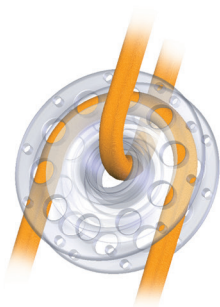


VERSATILE BLOCKS



HIGH LOAD BLOCKS

WHY CHOOSE KARVER'S LASHING BLOCKS?



► SAFETY FEATURE

Modern rope technologies have enabled sailors to replace metal connections with soft lashings allowing higher working loads.



► LOW FRICTION

High working load and low friction ratio (titanium and ceramic roller bearings) Karver blocks are the lightest and the most efficient on the market.



► DESIGN

Karver block design has been simplified to the max so it can be used by everyone from the hard core racer to the weekend cruiser.



► UNIVERSAL

Karver now offers the widest range of lashing blocks for boats from 2 to 70 meters

Features and benefits

Description	KBO	KB	KBR
SIDE PLATES	KBO1 to 8: Plastic + fibre KBO10 to 50: Aluminium alloy	KB6 and KB8: Plastic +fibre KB10 to KB12: Aluminium alloy	Carbon/Aluminum/Stainless steel
SIDE BALL BEARINGS	POM from KB08	N/A	Ceramic
CENTRE ROLLER BEARINGS	PEEK®	PEEK®	Titanium
ROPE SHACKLE INCLUDED	Up to KBO30	Optional	Optional
LEATHER OR WOOD OPTION	N/A	N/A	YES
FRICTION RATIO	5 to 7%	5 to 7%	2%
INSTALLATION	Easy	Rope-work required	Rope-work required
DOUBLE AND TRIPLE OPTION	Up to KB08	With link	N/A
WEIGHT TO SWL RATIO	**	*	***
COST	***	**	*



ROPE LASHING BLOCKS SAIL LIGHTER!

The rope shackle will never break due to the load or rust over the years.



+FAST ATTACHMENT

- The rope shackle is included with the block up to KBO30.

+SIMPLICITY

- Easy fitting from the lashing guide and rope shackle attachment simplifies the use of the KBO block.

+LIGHTWEIGHT

- The design and material optimisation make the block extremely light.

+PERFORMANCE

- The KBO block features a two stage bearing system from the KBO8 to enhance low friction.



KBO lashing blocks have the best size to weight ratio on the market.

KBO rope lashing makes fitting easier and quicker than standard shackles.



© Camille Lecointre

► JO 2016 Rio. Bronze for Camille Lecointre & Hélène Defrance with their 470. Congrats!



© Karver Systems

► KBO10 bearings.



MODEL	PART NUMBER	SWL	WEIGHT	MAX LINE	BEST LINE	SHEAVE	SOFT SHACKLE
KBO1 SIMPLE	PF830030	0.15	0.010	6	5	22.5	MP551865
KBO2 SIMPLE	PF790030	0.22	0.026	8	7	32	MP551701
KBO4 SIMPLE	PF650030	0.40	0.028	8	7	32	MP551701
KBO6 SIMPLE	PF800030	0.60	0.047	10	9	38	MP551148
KBO8 SIMPLE	PF890030	0.85	0.080	12	11	47	MP551148
KBO1 DOUBLE	PF830030 [D]	0.25	0.018	6	5	22.5	MP553117
KBO2 DOUBLE	PF790030 [D]	0.35	0.050	8	7	32	MP553119
KBO4 DOUBLE	PF650030 [D]	0.65	0.066	8	7	32	MP553319
KBO6 DOUBLE	PF800030 [D]	0.95	0.103	10	9	38	MP553121
KBO8 DOUBLE	PF890030 [D]	1.30	0.148	12	11	47	MP551323
KBO1 TRIPLE	PF830030 [T]	0.35	0.025	6	5	22.5	MP553118
KBO2 TRIPLE	PF790030 [T]	0.45	0.072	8	7	32	MP553120
KBO4 TRIPLE	PF650030 [T]	0.90	0.084	8	7	32	MP553120
KBO6 TRIPLE	PF800030 [T]	1.30	0.148	10	9	38	MP553122
KBO8 TRIPLE	PF890030 [T]	1.80	0.213	12	11	47	MP553124



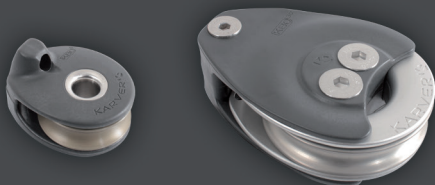
KBO10	PF660030	1.2	0.083	12	11	52	MP551148
KBO15	PF670030	1.8	0.143	14	13	63	MP551149
KBO20	PF680030	2.6	0.186	14	13	74	MP551149
KBO20 WIDE	PF680030 [L]	2.6	0.244	16	2 x 10	74	MP551150
KBO30	PF690030	3.5	0.334	16	15	97	MP551150
KBO50	PF810030	5	0.610	18	15	123	X

NEW From KBO10 to KBO50, it's now possible to order them as a snatch block version.

KBO10 SNATCH	PF660030 [OP]	1.2	0.083	12	11	52	MP551148
KBO15 SNATCH	PF670030 [OP]	1.8	0.143	14	13	63	MP551149
KBO20 SNATCH	PF680030 [OP]	2.6	0.186	14	13	74	MP551149
KBO30 SNATCH	PF690030 [OP]	3.5	0.334	16	15	97	MP551150
KBO50 SNATCH	PF810030 [OP]	5	0.610	18	17	123	X

FOOT BLOCK MINIMUM DIMENSIONS

Karver technology is screwed to the deck!



MODEL	PART NUMBER	SWL (T)	WEIGHT (Kg)	MAX LINE (mm)	BEST LINE (mm)	SHEAVE (mm)
KBO2FB	PF790030 [FB]	0.22	0.025	8	7	32
KBO4FB	PF650030 [FB]	0.40	0.027	8	7	32
KBO6FB	PF800030 [FB]	0.60	0.046	10	9	38
KBO8FB	PF890030 [FB]	0.80	0.080	12	11	47
* Installation screws are provided.						
KBO10FB	PF660030 [FB]	1.20	0.114	12	11	52
KBO15FB	PF670030 [FB]	1.80	0.196	14	13	63
KBO20FB	PF680030 [FB]	2.60	0.261	14	13	74
KBO30FB	PF690030 [FB]	3.50	0.482	16	15	97

RATCHET BLOCK REVERSIBLE

It doesn't matter which way you pass the line through the block!



Attached through the centre, the Karver ratchet block is the only block in which the ratchet can work in either direction.

MODEL	PART NUMBER	SWL (T)	WEIGHT (Kg)	MAX LINE (mm)	SHEAVE (mm)
KBO^W RATCHET BLOCK	PF760030	0.3	0.073	10	55



TRIPLE BLOCK + CAM CLEAT LIGHTER PURCHASE SYSTEMS

The first triple block featuring
the unmatched KJ3 cam cleat by Karver.



Delivered without the upper triple block.

MODEL	PART NUMBER	SWL (T)	WEIGHT (KG)	MAX LINE (mm)	SHEAVE (mm)
KB06J TRIPLE + CAM CLEAT	PF800030 [TKJ3]	0.8	0.348	10	38



SOFT SHACKLES MODERN SOLUTION



MODEL	PART NUMBER	SWL (T)
ROPE SHACKLE 0.5T	MP551701	0.5
ROPE SHACKLE 1T	MP551148	1
ROPE SHACKLE 2T	MP551149	2
ROPE SHACKLE 4T	MP551150	4
HIGH LOAD STROP + T-BONE	PF084853 [SS]	5
HIGH LOAD STROP + T-BONE	PF110040 [SS]	8
HIGH LOAD STROP + T-BONE	PF030040 [SS]	12
HIGH LOAD STROP + T-BONE	PF034854 [SS]	16



VERSATILITY SIMPLICITY AND DESIGN

Simple, reliable and efficient
the Karver KB block combines both freedom
of attachment and extreme safety.



+LIGHTWEIGHT

- Compared to traditional blocks (at equal working load), the use of a soft attachment through the centre of the block reduces weight up to 50%.

+VERSATILITY

- With the use of lashing materials, multiple attachments are possible when installing the block (e.g Backstay systems), or even just to tie it up (eg. to prevent capsizing).

+SAFETY FEATURES

- Attachment through the centre prevents the running line from becoming disconnected from the lashing line if the block fails under an extreme load.



Multiple possibilities

KB: Roller bearings adapted for general usage.

KBc: Self-lubricating plain bearings, KBc blocks are ideal for applications when the line is required to run under a very high load for a short distance (backstay, cunningham, boom vang, outhaul, etc).



MODEL	PART NUMBER	SWL (T)	WEIGHT (Kg)	MAX LINE (mm)	SHEAVE (mm)	LINK REF
KB6	PF190030 [GREY]	0.22	0.020	6	30	PL191142
KB8	PF040030 [GREY]	0.6	0.051	10	35	PL040774
KB10	PF020030	1	0.086	10	46	PL021143
KB12	PF180030	1.4	0.119	12	54	PL181094
KB8C	PF040031	0.8	0.044	8	33	PL041089
KB10C	PF020031	1.9	0.096	10	46	PL022210
KB12C	PF180031	3	0.167	12	56	PL182211

KB blocks are not provided with a soft shackle.

KBR HIGH LOAD BLOCKS RANGE

The KBR range features our high load lashing blocks (from 1.5T and up to over 40T). Built with our low friction technology, it is dedicated to racers and Super Yachts. Available in 3 different materials: carbon, aluminum, and stainless steel. The carbon version can be covered with a thin layer of wood or leather. No matter which one you choose, your block will always feature:

- A reliable and resistant block design to handle high loads.
- A very low friction bearing mechanism under load.
- Titanium sheaves, a two-stage bearing technology with rollers in titanium and balls in ceramic.
- An anti-capsizing design.
- An enlarged inner diameter to enable multiple attachments through the center.



KBR^C

CARBON



KBR^{CW&L}

WOOD OR LEATHER



KBR^A

ALUMINUM



KBR^{OP}

SNATCH BLOCKS



KBR^M

STAINLESS STEEL



HIGH LOAD BLOCKS

THE HIGHEST PERFORMING BLOCK ON THE MARKET

2% friction, carbon fibre, ceramic and titanium.



+PERFORMANCE

- Low friction ratio even under very high load (Titanium bearings).

+LIGHTWEIGHT

- Design optimisation and high tech component use make the KBr the lightest roller bearing block on the market.

+COMPACT

- The Titanium bearing system (Karver patent) ensures that the blocks hold high loads on smaller diameter sheaves.



KBr⁸⁰



The new design avoids any possible block capsizing.
The closed structure prevents the block from being crushed.

MODEL	PART NUMBER	SWL (T)	WEIGHT (Kg)	MAX LINE (mm)	SHEAVE (mm)
YACHTS					
KBRC15	PF330001 [C]	1.5	0.090	12	49
KBRC30	PF330002 [C]	3	0.097	12	49
KBRC50	PF330003 [C]	5	0.175	14	64
KBRC65	PF330005 [C]	6.5	0.280	16	75
KBRC80	PF330007 [C]	8	0.385	18	89
SUPER YACHTS					
KBRC105	PF330009 [C]	10.5	0.557	18	102
KBRC130	PF330012 [C]	13	0.800	20	115
KBRC160	PF330016 [C]	16	1.080	20	135
KBRC180	PF330018 [C]	18	1.350	22	147
KBRC250	PF330025 [C]	25	2.017	30	160
KBRC300	PF330030 [C]	30	3.620	35	180
KBRC400	PF330040 [C]	40	4.980	40	206

NEW



KBRc SPECIALS

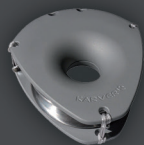
ELEGANT AND CLASSIC COVER

Yachties in the quest for the beauty will appreciate the upgrade in wood or leather while the block's performance remains unchanged.



NEW

SWL (T)	LEATHER MODEL	PART NUMBER	WOODEN MODEL	PART NUMBER
YACHTS				
1.5	KBRCL15	PF330001 [L]	KBRCW15	PF330001 [CW]
3	KBRCL30	PF330002 [L]	KBRCW30	PF330002 [CW]
5	KBRCL50	PF330003 [L]	KBRCW50	PF330003 [CW]
6.5	KBRCL65	PF330005 [L]	KBRCW65	PF330005 [CW]
8	KBRCL80	PF330007 [L]	KBRCW80	PF330007 [CW]
SUPER YACHTS				
10.5	KBRC105	PF330009 [L]	KBRCW105	PF330009 [CW]
13	KBRCL130	PF330012 [L]	KBRCW130	PF330012 [CW]
16	KBRCL160	PF330016 [L]	KBRCW160	PF330016 [CW]
18	KBRCL180	PF330018 [L]	KBRCW180	PF330018 [CW]
25	KBRCL250	PF330025 [L]	KBRCW250	PF330025 [CW]
30	KBRCL300	PF330030 [L]	KBRCW300	PF330030 [CW]
40	KBRCL400	PF330040 [L]	KBRCW400	PF330040 [CW]



HIGH LOAD ALUMINUM BLOCKS

More traditional than its sister ship, the KBRa block feature side plates made of aluminum and a two stage bearing mechanism with titanium rollers and Torlon® ball bearing for very low friction.

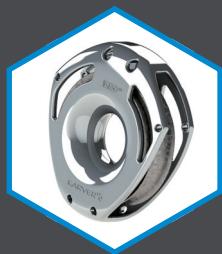
MODEL	PART NUMBER	SWL (T)	WEIGHT (Kg)	MAX LINE (mm)	SHEAVE (mm)
YACHTS					
KBRA30	PF330002 [AL]	3	0.139	12	49
KBRA50	PF330003 [AL]	5	0.227	14	64
KBRA65	PF330005 [AL]	6.5	0.323	16	75
KBRA80	PF330007 [AL]	8	0.494	18	89
SUPER YACHTS					
KBRA105	PF330009 [AL]	10.5	0.660	18	102
KBRA130	PF330012 [AL]	13	0.994	20	115
KBRA160	PF330016 [AL]	16	1.321	20	135
KBRA180	PF330018 [AL]	18	1.667	22	147
KBRA250	PF330025 [AL]	25	2.522	30	160
KBRA300	PF330030 [AL]	30	4.480	35	180
KBRA400	PF330040 [AL]	40	6.152	40	206



HIGH LOAD ALUMINUM SNATCH BLOCKS

The entire KBRa range is available as a snatch block.
One of the side plates pivots from the centre to open.
A self-gripping strap keeps the block closed.
Operating the block takes only a few seconds with the soft shackle.

MODEL	PART NUMBER	SWL (T)	WEIGHT (Kg)	MAX LINE (mm)	SHEAVE (mm)
YACHTS					
KBRA65 SNATCH	PF330005 [OP]	6.5	0.330	16	75
KBRA80 SNATCH	PF330007 [OP]	8	0.476	18	89
SUPER YACHTS					
KBRA105 SNATCH	PF330009 [OP]	10.5	0.630	18	102
KBRA130 SNATCH	PF330012 [OP]	13	0.964	20	115
KBRA160 SNATCH	PF330016 [OP]	16	1.291	20	135
KBRA180 SNATCH	PF330018 [OP]	18	1.637	22	147
KBRA250 SNATCH	PF330025 [OP]	25	2.492	30	160
KBRA300 SNATCH	PF330030 [OP]	30	4.450	35	180
KBRA400 SNATCH	PF330040 [OP]	40	6.122	40	206



KBRm

MIX OF BEAUTY AND PERFORMANCE

The KBRm blocks feature the same low friction bearing technology as the KBR carbon. The side plates are made of polished stainless steel.

KBR^M

+KARVER

ADVANTAGES

- All the benefits of the modern KBR block in a classic version.
- Reliability with minimum maintenance.
- Compact & light.



MODEL	PART NUMBER	SWL (T)	WEIGHT (Kg)	MAX LINE (mm)	SHEAVE (mm)
YACHTS					
KBRM15	PF330001 [M]	1.5	0.205	12	49
KBRM30	PF330002 [M]	3.0	0.223	12	49
KBRM50	PF330003 [M]	5.0	0.405	14	64
KBRM65	PF330005 [M]	6.5	0.644	16	75
KBRM80	PF330007 [M]	8.0	0.897	18	89
SUPER YACHTS					
KBRM105	PF330009 [M]	10.5	1.264	18	102
KBRM130	PF330012 [M]	13.0	1.830	20	115
KBRM160	PF330016 [M]	16.0	2.490	20	135
KBRM180	PF330018 [M]	18.0	3.105	22	147
KBRM250	PF330025 [M]	25.0	4.600	30	160
KBRM300	PF330030 [M]	30.0	8.300	35	180
KBRM400	PF330040 [M]	40.0	11.450	40	206

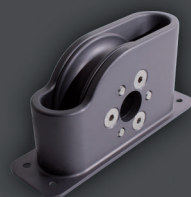


SHEAVES

HIGH LOAD & LOW FRICTION

KDS sheaves feature a plain bearing for high working loads and ball bearings for lateral loads. The Karver sheave range offers a very low weight to working load ratio.

MODEL	PART NUMBER	SWL (T)	WEIGHT (Kg)	MAX LINE (mm)	SHEAVE (mm)	PIN (mm)
○ KDS25	PF980025 [FP]	2.5	0.098	12	65	12
○ KDS40	PF980040 [FP]	4	0.266	18	80	16
○ KDS60	PF980060 [FP]	6	0.419	24	100	26
○ KDS100	PF980100 [FP]	10	0.703	26	113	32
○ KDS150	PF980150 [FP]	15	1.382	28	160	60
○ KDS25	PF980025	2.5	0.098	12	65	12
○ KDS40	PF980040	4	0.266	18	80	16
○ KDS60	PF980060	6	0.419	24	100	26
○ KDS100	PF980100	10	0.703	26	113	32
○ KDS150	PF980150	15	1.382	28	160	60

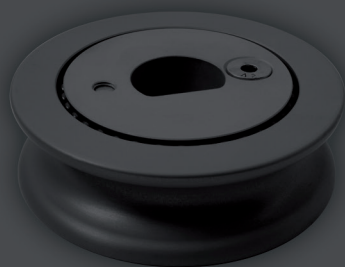


SHEAVE BOXES

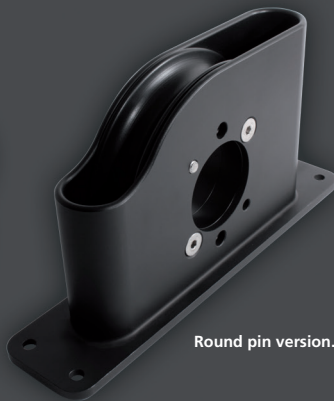
HIGH LOAD & LOW FRICTION

Our sheaves and sheave boxes are manufactured in aluminum alloy (6000 series), hard anodised, and they enable main, staysail and ORC halyards to go through with minimum friction.

MODEL	PART NUMBER	SWL (T)	WEIGHT (Kg)	MAX LINE (mm)	SHEAVE (mm)	PIN (mm)
○ KDSB25	PF970025 [FP]	2.5	0.279	12	65	12
○ KDSB40	PF970040 [FP]	4	0.519	18	80	16
○ KDSB60	PF970060 [FP]	6	0.967	24	100	26
○ KDSB100	PF970100 [FP]	10	1.465	26	113	32
○ KDSB150	PF970150 [FP]	15	2.904	28	160	60
○ KDSB25	PF970025	2.5	0.279	12	65	12
○ KDSB40	PF970040	4	0.519	18	80	16
○ KDSB60	PF970060	6	0.967	24	100	26
○ KDSB100	PF970100	10	1.465	26	113	32
○ KDSB150	PF970150	15	2.904	28	160	60



Flat pin version.



Round pin version.

Each model can be ordered with a round or flat pin [FP].



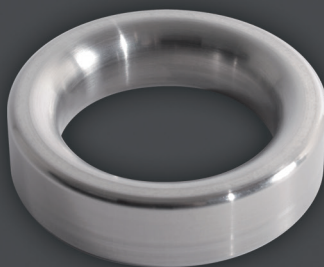
+KARVER

ADVANTAGES

- A complete product line is now available. We can also produce custom rings per your specs.

TITANIUM RINGS STRENGTH AND LIGHT WEIGHT

Titanium is one of our preferred material in our manufacturing process. Rings are a natural addition to in our catalog.



MODEL	PART NUMBER	SWL (T)	WEIGHT (Kg)	OUTTER DIAM (mm)	INNER DIAM. (mm)	WIDTH (mm)
KRTi35	PL1024601	3.5	0.060	50	30	12
KRTi45	PL1024602	4.5	0.096	60	40	16
KRTi60	PL1024603	6	0.186	75	50	20
KRTi70	PL1024604	7	0.259	85	55	20
KRTi150	PL1024605	15	0.772	115	70	30
KRTi250	PL1024606	25	0.996	125	75	32
KRTi400	PL1024607	40	2.037	150	80	40

The jammer that won't give up!



KJ

HIGH LOAD JAMMER



KJP

HIGH LOAD JAMMER (PIG)



KJ 2&3

CAM CLEAT



KW

WINCHLESS



KJH

JAWS HANDLE

KARVER: THE ROPE HOLDING SPECIALIST

Not everything can be locked all of the time which is why as rope specialists we needed to innovate in terms of holding and deck organization.



Remote operation



Modular



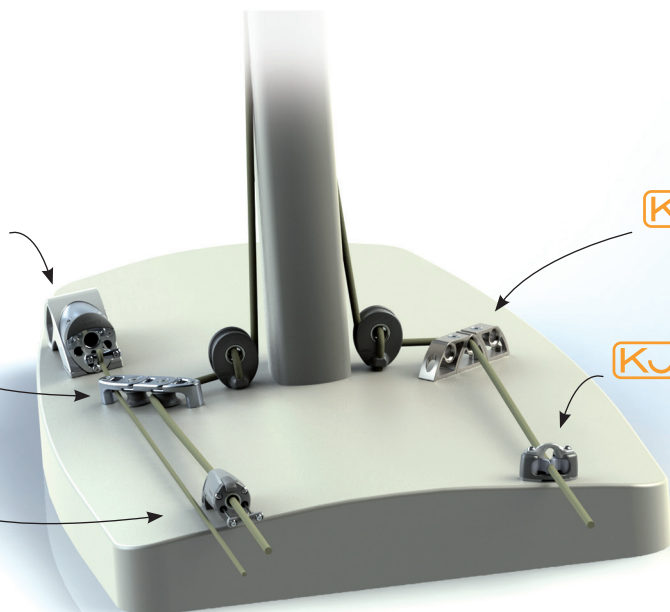
Exceptionnall holding



A unique design



Easy release



From the mast to the cockpit, organize and efficiently hold your lines.



© Initiatives cœur



HIGH LOAD JAMMER

THE JAMMER THAT WON'T GIVE UP!

Unlike traditional jammers that squeeze lines between 2 jaws, Karver KJ jammer secures the line evenly around its cover with 3 jaws.



+ROPE HOLDING

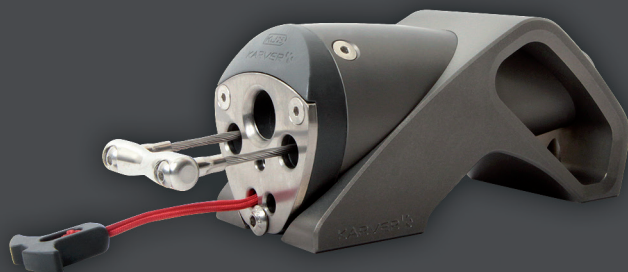
- No slipping when under high load. No rope wear.

+PERFORMANCE

- Up to 50% lighter than the competition.
- Up to 3 different rope diameters can be used on the same jammer

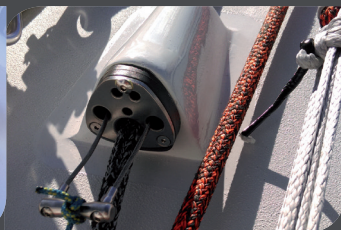
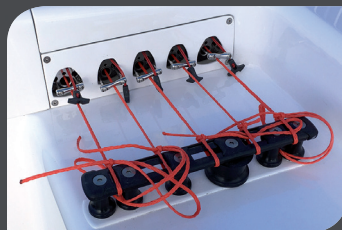
+SPECIAL FEATURES

- Remote control possible.
- Easy maintenance.



The conical KJ can be taken off its base, which can then be bonded into a casing on the deck or in the mast.

© Reichel Pugh/Baltic Yachts



MODEL	PART NUMBER	SWL (T)	MIN / MAX (mm)	BEST LINE (mm)	WEIGHT (Kg)	WEIGHT WITHOUT BASE	LENGTH X WIDTH X HEIGHT (mm)
KJ10	PF840100	0.4 - 1	5 - 10	8	0.236	0.128	98,1 x 44,2 x 52
KJ15	PF840150	0.6 - 1.5	6 - 12	10	0.340	0.186	111 x 49,2 x 57,8
KJ25	PF840250	1.1 - 2.5	8 - 14	12	0.600	0.330	135 x 57,2 x 64,5
KJ50	PF840500	2 - 5	12 - 20	18	1.050	0.560	160,5 x 70,4 x 81
KJ100	PF841000	6 - 10	20 - 32	28	2.980	1.640	245,2 x 102,1 x 114,5

ALU CONE ONLY	CARBON CONE ONLY	IMPRINT
PF840100 [CONE]	PF840100 [CONEC]	N/A
PF840150 [CONE]	PF840150 [CONEC]	PL843800
PF840250 [CONE]	PF840250 [CONEC]	PL843801
PF840500 [CONE]	PF840500 [CONEC]	PL843802
PF841000 [CONE]	PF841000 [CONEC]	PL843803

A SIMPLE AND EFFICIENT CONCEPT

All the KJ jammers have been designed with the same philosophy:

3 concentric jaws that can be separated from their base and have the ability to be operated remotely.



► UNIQUE CONCEPT

KJ jammer envelops the entire rope using the 3 jaws.

Jaw surface area has been maximized to prevent rope wear.

Unrivalled holding power.

► OPERATION

The trip line (above) makes it possible to release the rope up to a load of 50 kg.

Over 50 kg, the load must be released using a winch.

The red line closes the jammer.

These 2 operations can be carried out remotely.

► SPECIAL FEATURES

The conical body of the jammer is inserted in an alloy base and screwed onto the deck or mast.

The KJ jammer can be dismantled in 30 seconds for maintenance or servicing.

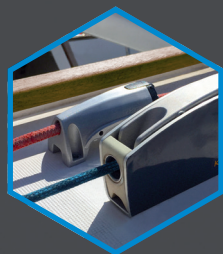
Custom carbon conical part possible.

► INSTALLATION

The conical jammer is held in place by a single screw in its base.

The version ready for bonding into the boat is integrated into a conical socket.

Weight is kept to a minimum.



KJP

THE SECOND GENERATION

Lighter and more compact, the main aluminum body features a quick release locking mechanism of the line.

KJP

+ADVANTAGES

- Narrower than the KJ.
- Better release access.
- New design ideal for the pit.

NEW



MODEL	PART NUMBER	SWL (T)	MIN / MAX (mm)	BEST LINE (mm)	WEIGHT (Kg)	LENGTH X WIDTH X HEIGHT (mm)
KJP10	PF844261	0.4 - 1	5 - 10	8	0.210	100x40x48
KJP15	PF844266	0.6 - 1.5	6 - 12	10	0.295	111x46,4x57



WINCHLESS AN AUTOMATIC PURCHASE INSTEAD OF A WINCH!

Based on the Karver KJ jammer design, it's possible to sheet-in with just a purchase system using the Karver Winchless.



+ADVANTAGES

- Can replace a winch on small sailboats.
- Enables user to operate the line from a distance (when hiking for instance).



MODEL	PART NUMBER	SWL (T)	WEIGHT (Kg)	LENGTH X WIDTH X HEIGHT (mm)	MIN / MAX (mm)	BEST LINE (mm)
WINCHLESS	PF840040	0.3	0.24	100 x 72 x 53	5 - 10	8



CAM CLEAT HIGH PERFORMANCE

High strength and reliability.



MODEL	PART NUMBER	BODY MATERIAL	SWL (T)	WEIGHT (Kg)	MAX LINE (mm)	FASTENER SPACING (mm)
KJ2 CAM CLEAT	PF840050	Fiber	0.200	0.045	10	38
KJ3 CAM CLEAT	PF840010	Aluminum	0.310	0.069	10	38
FAIRLEAD KJ2/KJ3 CAM CLEAT	SF842531	-	-	0.009	10	38



CAM BASES UNIVERSAL*

Assembled with the KJ cam cleat, compact and weight optimized.



► Swivel cleat bases for KB or KBO block



► Swivel cleat bases for ratchet block



► Swivel cleat bases with eye

MODEL	PART NUMBER	SWL (T)	WEIGHT (Kg)	MAX LINE (mm)
KSC FOR BLOCK**	PF840031	0.200	0.183	10
KSC FOR RATCHET**	PF840032	0.200	0.205	10
KSC EYE	PF840030	0.200	0.195	10

*Same parts for different applications - **Sold without block.



JAWS HANDLE UNIQUE TO THE MARKET!

The KJH "Jaws Handle" is the ideal system to tighten up a sheet without hurting your hands!



APPLICATION

- An efficient trimmer tool which pulls hard on a small diameter line.
- Free up a winch when striking a new sail
- Flying stopper
- Hold a halyard that is stuck



MODEL	PART NUMBER	SWL (T)	WEIGHT (Kg)	MAX LINE (mm)
KJH YELLOW	PF840020	0.110	0.130	10
KJH PINK	PF840020 [ROSE]	0.110	0.130	10
KJH GREY	PF840020 [GRIS]	0.110	0.130	10

Light, attractive machinery!



This low friction organizer is made in a solid block and handle high loads for a minimal weight.

Low friction deck organizer for low angles, each component fits into the other.

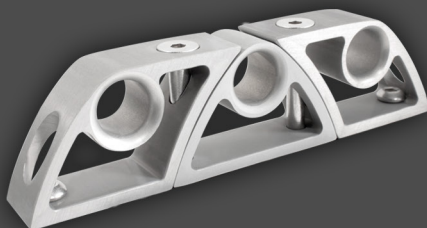
MODEL	PART NUMBER	SWL 60° (T)	WEIGHT (Kg)	MAX DIAM (mm)	HOLES
KORG18-1	PL781679	1.000	0.085	18	1
KORG18-1W	PL781678	1.000	0.111	18	1
KORG18-2	PL781440	1.000	0.147	18	2
KORG18-3	PL781043	1.000	0.205	18	3
KORG18-4	PL781265	1.000	0.328	18	4
KORG18 CUSTOM	PL781180	-	-	18	-
KORG22-1	PL784859	2.000	0.092	22	1
KORG22-1W	PL784860	2.000	0.186	22	1
KORG22-2	PL784861	2.000	0.222	22	2
KORG22-3	PL784862	2.000	0.280	22	3
KORG22-4	PL784863	2.000	0.403	22	4
KORG22 CUSTOM	PL784865	-	-	22	-
KORG30-1	PL784866	3.000	0.289	30	1
KORG30-1W	PL784867	3.000	0.383	30	1
KORG30-2	PL784868	3.000	0.418	30	2
KORG30-3	PL784869	3.000	0.478	30	3
KORG30-4	PL784870	3.000	0.601	30	4
KORG30-CUSTOM	PL784871	-	-	30	-

ORGANIZERS WELL DESIGNED AND LIGHT!

The Komino fairleads simply assemble together.



© Kanver Systems



Low friction deck organizer for low angles.

MODEL	PART NUMBER	SWL 60° (T)	WEIGHT (Kg)	MAX LINE (mm)
KOMINO SIMPLE	PL843946	0.380	0.033	12
KOMINO INTER	PL843945	0.380	0.038	12

ORGANIZERS YOU CAN STACK THEM UP!

NEW



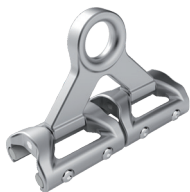
© Kanver Systems



Low friction deck organizer featuring a plain bearing sheave, each component can fit into another and be installed as a curve. The fastening pattern makes it possible to install a KJ2 or KJ3 cam cleat on top of it.

MODEL	PART NUMBER	SWL 60° (T)	WEIGHT (Kg)	MAX LINE (mm)	SHEAVE (mm)	SHEAVE
KSO8 - START	PF784532	0.80	0.031	-	-	0
KSO8 - END	PF784531	0.80	0.045	14	30	1
KSO8 - SUPP	PF784533	0.80	0.036	14	30	1
KSO20 - START	PF784780	2.00	0.112	-	-	0
KSO20 - END	PF784778	2.00	0.189	16	50	1
KSO20 - SUPP	PF784779	2.00	0.154	16	50	1

To order a complete KSO: PF784533 [3] for a KSO8 3 sheaves. PF784779 [6] for a KSO20 6 sheaves.



KMS 30



KMS 40



KMS 60



KMS 80 & 100

TRACK AND CAR SYSTEMS: DESIGNED TO LAST!

Developed in relationship with the biggest offshore racing teams, the Karver batten cars and track systems are reliable, compact and lightweight.

4 reasons to choose a Karver mast system:

- An extremely optimized product line for greater performance
- Modern design and continual innovation
- Reliable and efficient locking solutions
- An unmatched capacity to produce custom systems in a short timeframe



© Karver Systems

CHARACTERISTICS	UNIT	KMS30	KMS40	KMS60	KMS80	KMS100
Yacht size	ft	< 35	35-50	50-70	70-110	100-140
Track upper width	mm	19.6	21	29	34	48
Base track width	mm	19.6	24	29	34	48
Track height	mm	6.6	12.2	14	16	22.5
Weight / m - Standard	g / m	250	304	488	664	1490
Weight / m - Lightened	g / m	X	X	418	564	1245
Length	m	2	2.85	3 & 6	3 & 6	3 & 6
Fastener	mm	6	5	6	8	10
Standard fastening space	mm	250	300	250	500	500
Headboard with lock	-	N/A	YES	YES	YES	YES
Batten cars - Standard pin	-	M10	M10	M14	M16	M18

- > A track section can be ordered with reinforced and enlightened sections
- > Batten car screw diameter & length can be modified
- > Our mast cars can be installed on many competitor tracks. Please ask us!
- > You can use ball bearing and friction cars on the same track
- > Batten receptacles can be ordered for other batten models

KARVER MAST SYSTEMS

▶ Locking area track

▶ Track joiner

▶ Standard track

▶ Track joiner

▶ Custom track reinforced + alighten zones

▶ Car charger

▶ Standard headboard car

▶ Lashing headboard car

▶ Locking headboard car

▶ Gaff lock headboard car

▶ 2:1 headboard car

▶ Square top batten car fast pin

▶ Square top batten reinforced car

LONG DESIGN

▶ Batten cars

▶ Intermediate car

▶ Tack/reef car alighten

▶ Batten receptacle

▶ Track endstop

COMPACT DESIGN

▶ Battcar with fuse

▶ Reinforced battcar without fuse

▶ Intermediate car

▶ Tack/reef car

▶ Reinforced battcar without fuse

▶ Battcar with fuse

TRACKS



- All our tracks are precision made
- Possibility to reinforce zones where reefs will be taken
- Possibility to lighten zones where loads will be minimized
- Possibility to mix reinforce, lighten & locking zones on the same track section
- Permanent stock of raw track to shorten lead time for custom machinery
- Ball bearing or sliders cars fitting on the standard track shape

CARS

GENERAL:

- Ultra compact, light & modern design
- Machined cars for better reliability & resistance
- Toggles on the cars are close to the mast aft face to limit tearing risks
- All cars are available with a short or long design to fit the right load
- All cars can be ordered with ball bearings but we recommend the friction
- Sliders made of self-lubricated material for lower friction & limited wear
- As every project is unique, custom cars are available on request (60% of our sales)

HEADBOARD CARS:

- Many headboard cars configuration with or without lock
- 2 to 1 Gaff lock developed to easily hoist and flake square top mainsails
- Locking headcar: external and/or internal remote control with or without position sensor.

NEW

TOP BATTEN CAR:

- Available with or without fast pin
- Optimized angular displacement for the batten box screw

BATTEN CARS:

- Our batten cars feature a fuse mechanism to prevent any damage to the cars or the track if overloaded
- Reinforced version available (without fuse)

INTERMEDIATE CARS:

- Ultra compact design & light (machined in one piece)

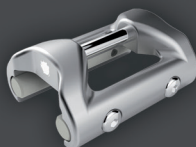
REEF/TACK CARS:

- A reinforced car for the highest load

BATTEN RECEPTACLES:

- Many batten receptacle models available
- New "Rocket" design





MODEL	STD	PART NUMBER	WEIGHT (Kg)	HEIGHT (mm)
TRACKS				
TRACK 22mm STANDARD (M6/25 mm)	STD	PF1042549	0,250 / m	2000
HEADBOARD CARS				
HEADBOARD CAR STANDARD	STD	PF1044878	0.110	81
HEADBOARD CAR LASHING	-	PF1043734	0.073	81
NEW HEADBOARD CAR GAFF LOCK	-	PF1044813 [CHRT]	0.860	88
BATTEN CARS				
BATTCAR M10	STD	PF1043362	0.043	40
TACK / REEF CARS				
TACK / INTERMEDIATE CAR	STD	PF1043735	0.023	40
INTERMEDIATE CARS				
TACK / INTERMEDIATE CAR	STD	PF1043735	0.023	40
ACCESSORIES				
TRACK JOIGNER	STD	PL1044872	0.013	50
TRACK END STOP	STD	PL1044873	0.022	25
CAR LOADER	-	PL1044874	0.040	150
GAFF LOCK (ONLY)	-	PF1044813	0.045	62
HR STROPE FOR GAFF LOCK	-	MP1044826	0.020	80
BATTEN RECEPTACLES				
BATTEN BOX M10	-	PF1043321	0.080	-

The KMS40 range benefits from Karver knowledge of mainsail track systems.

Available for boats from 35 to 50 feet long for unrivalled performance and reliability.



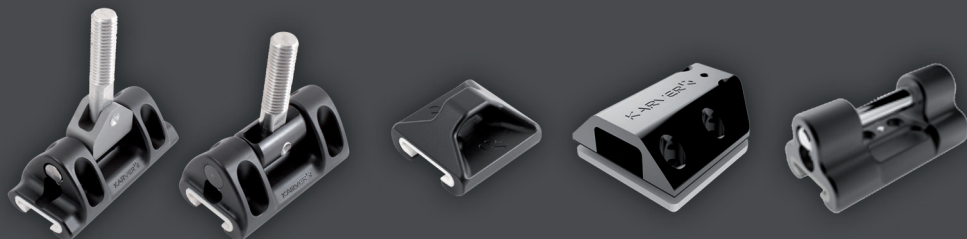
MODEL	STD	PART NUMBER	WEIGHT (Kg)	HEIGHT (mm)
TRACKS				
21MM STANDARD TRACK (M5 / 30 mm) 2,85M	STD	PF1402711	0,304 g /m	2850
REINFORCED TRACK (M5CSH / 30 mm) 2,85M	-	PF1404875	0,295 g /m	2850
LOCKING AREA	-	PF1403564	0,136	525
HEADBOARD CARS				
HEADBOARD CAR - STANDARD	STD	PF1403035	0.388	140
HEADBOARD CAR - DOUBLE LASHING	-	PF1402992	0.279	140
HEADBOARD CAR - LOCK + LASHING	-	PF1403036	0.284	140
HEADBOARD CAR - GAFF LOCK	-	PF1404581 [CHRT]	0.842	153
SQUARE TOP BATTEN CARS				
SQUARE TOP BATTCAR FAST PIN M10	STD	PF1404876	0.220	70
BATTEN CARS				
BATTCAR REINFORCED M10 WITHOUT FUSE	STD	PF1402710 [R]	0.102	70
BATTCAR M10 WITH FUSE	-	PF1402710	0.149	70
BATTCAR M10 WITH FAST FUSE	-	PF1403020	0.155	70
TACK / REEF CARS				
TACK / REEF CAR	STD	PF1403031	0.250	70
INTERMEDIATE CARS				
INTERMEDIATE CAR	STD	PL1403588	0.025	50
ACCESSORIES				
REMOVABLE TRACK DOOR	STD	PF1403054	0.094	200
TRACK DOOR - CAR CHARGER	STD	PF1404052	0.071	200
TRACK ENDSTOP (x1)	-	PL1403277	0.011	25
TRACK JOINER	-	PL1404013	0.007	50
REINFORCED INSERT	-	PL1404880	0.017	50
HL STROPE FOR GAFF LOCK	STD	MP1404478	0.400	80
GAFF LOCK ONLY	-	PF1404581	0.473	127

> The standard batten car screw is M10 but can be ordered with M8 or M12.

> Our mast cars can be installed on many competitor tracks. Please ask us!

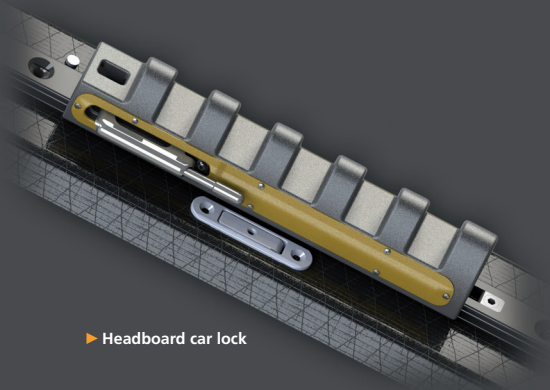
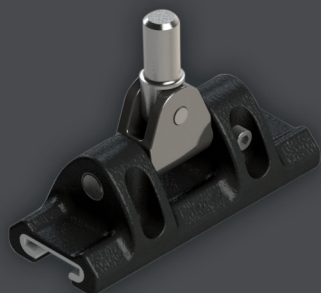
> A complete range of batten receptacles is available.

MODEL	STD	PART NUMBER	WEIGHT (Kg)	HEIGHT (mm)
TRACKS				
STANDARD 29MM TRACK (M6 / 25 mm) 3M	STD	PF1602744 [3M]	0,488 g/m	3000
REINFORCED 29MM TRACK (M6CSH / 25 mm) 3M	-	PF1604883 [3M]	0,480 g/m	3000
ENLIGHTED V1 29MM TRACK (M6 / 50 mm) 3M	-	PF1604882 [3M]	0,429 g/m	3000
ENLIGHTED V2 29MM TRACK (M6 / 75 mm) 3M	-	PF1604881 [3M]	0,423 g/m	3000
ENLIGHTED V3 29MM TRACK M6 / 100 mm) 3M	-	PF1604888 [3M]	0,418 g/m	3000
LOCKING TRACK	-	PF1603545	0,380 g/m	400
CUSTOM KMS60 TRACK	-	PF1602744 [CUST]	-	-
HEADBOARD CARS				
STANDARD HEADBOARD CAR	STD	PF1604050	0.496	200.00
HEADBOARD CAR + 2:1 BLOCK + LASHING	-	PF1603271	0.827	200
HEADBOARD CAR + LOCK + LASHING	-	PF1602999	0.589	200
HEADBOARD CAR DOUBLE LASHING	-	PF1604321	0.496	180
NEW HEADBOARD CAR + GAFF LOCK	-	PF1604748 [CHRT]	1.347	201
CUSTOM KMS60 HEADBOARD CAR	-	PF1604050 [CUST]	-	-
SQUARE TOP BATTEN CARS				
SQUARE TOP BATTCAR L110 M14 + FAST PIN	STD	PF1604209	0.380	110
BATTCAR REINFORCED L110 M14	-	PF1602778	0.320	110
BATTCARS				
BATTCAR L90 M14 + FAST FUSE		PF1602878 [90]	0.302	90
BATTCAR L110 M14 + FAST FUSE		PF1602878		110
BATTCAR REINFORCED L90 M14	STD	PF1602778 [90]	0.338	90
BATTCAR REINFORCED L110 M14		PF1602778	0.423	110
BALL BEARING BATTCARS				
BALL BEARING SQUARE TOP BATTCAR L113 M14 FAST PIN		PF1603507	0.410	113.40
BALL BEARING BATTCAR L93 M14 + FAST FUSE		PF1602939 [90]	0.390	90
BALL BEARING BATTCAR L113 M14 + FAST FUSE		PF1602939	0.557	116
BALL BEARING BATTCAR REINFORCED L93 M14		PF1604890 [90]	0.405	90
BALL BEARING BATTCAR REINFORCED L113 M14		PF1604890	0.560	110



MODEL	STD	PART NUMBER	WEIGHT (Kg)	HEIGHT (mm)
TACK OR REEF CARS				
TACK / REEF CAR L90	-	PF1602942	0.227	90
TACK / REEF CAR L110	STD	PF1602944	0.260	110
TACK / REEF ALIGHTEN MONOBLOC	-	PF1602943	0.189	110
INTERMEDIATE CARS				
INTERMEDIATE CAR 50MM (PA6)	-	PF1602932	0.026	50
INTERMEDIATE CAR 50MM (ALU)	STD	PF1602881	0.062	50
INTERMEDIATE CAR 70MM (ALU)	-	PF1604433	0.095	70
ACCESSORIES				
TRACK JOINER	STD	PL1603525	0.018	50
REINFORCED INSERT	-	PL1603528	0.018	50
TRACK ENDSTOP	STD	PF1604883	0.055	50
TRACK DOOR - CHARGER	STD	PF1604849	0.012	200
GAFF LOCK ONLY	-	PF1604748	0.907	148.60
HIGH LOAD STROP FOR GAFF LOCK	-	MP1604479	0.220	110
BATTEN RECEPTACLES				
BATTEN RECEPTACLE 30x20 M14 (ALU)	-	PF1612889	0.348	-
BATTEN RECEPTACLE 30x20 M14 (PA6)	-	PF1612891	0.180	-
BATTEN RECEPTACLE 39x20 M14 (ALU)	-	PF1682883	0.465	-
BATTEN RECEPTACLE D22 M14 (ALU)	-	PF1613288	0.418	-
BATTEN RECEPTACLE D22 M14 (PA6)	-	PF1612890	0.206	-
BATTEN RECEPTACLE 30x20 FOR TOP BATTEN M14 (PA6)	-	PF1613257	0.196	-
BATTEN RECEPTACLE 30x20 FOR TOP BATTEN M14 (ALU)	-	PL1604920	0.348	-
NEW BATTEN RECEPTACLE "ROCKET" 30x20 M14 (ALU)	-	PF1614568	0.157	-

- > Track lengths are available in 3 or 6 meters or custom.
- > A track section can be ordered with reinforced and enlited sections.
- > The standard batten car screw is M14 but can be ordered with M12 or M16.
- > Our mast cars can be installed on many competitor tracks. Please ask us!
- > You can use ball bearing and friction cars on the same track.
- > Batten receptacles can be ordered for others batten models.



► Headboard car lock

MODEL	STD	PART NUMBER	WEIGHT (Kg)	HEIGHT (mm)
TRACKS				
STANDARD 34MM TRACK (M8 / 25 mm) 3M	STD	PF1804542	0,664 / m	3000
ENLIGHTED 34MM TRACK (M8 / 25 mm) 3M	-	PF1804543	0,579 / m	3000
REINFORCED 34 MM TRACK (M8CSH / 25 mm) 3M	-	PF1804544	0.664 / m	3000
REINFORCED 34 MM TRACK (M8CSH / 25 mm) 0,8M	-	PF1804545	0.664 / m	800
LOCKING AREA (DOUBLE) IN THE TRACK	-	PF1804548	1.22	800
LOCKING AREA LATERAL SIDE OF THE TRACK	-	PF1804549	1.28	800
LOCK TRIGGER BOX (INTERNAL REMOTE CONTROL)	-	PF1804655	0.148	66
CUSTOM KMS80 TRACK	-	PF1804542 [CUST]	x	x
HEADBOARD CARS				
HEADBOARD CAR STANDARD	STD	PF1804690	2.2	280
HEADBOARD CAR DOUBLE LOCK + LASHING	-	PF1804691	2.6	400
HEADBOARD CAR WITH LATERAL LOCK	-	PF1804549	3.7	400
HEADBOARD CAR + GAFF LOCK	-	PF1804749 [CHRT]	2.1	300
HEADBOARD CAR CUSTOM	-	PF1804692	x	x
SQUARE TOP BATTEN CARS				
BATTCAR 140MM SQUARE TOP BATTEN M16	STD	PF1804677 [M16]	0.727	140
BATTCAR 140MM REINFORCED M16	-	PF1804695 [M16]	0.65	140
BATTEN CARS				
BATTCAR L110 M16 + FAST FUSE	-	PF1804892 [M16]	0.51	110
BATTCAR L140 M16 + FAST FUSE	-	PF1804893 [M16]	0.55	140
BATTCAR L110 REINFORCED M16	-	PF1804695 [M16]	0.56	110
BATTCAR L140 REINFORCED M16	STD	PF1804695 [M16]	0.60	140

NEW

MODEL	STD	PART NUMBER	WEIGHT (Kg)	HEIGHT (mm)
BALL BEARING BATTCARS				
BALL BEARING SQUARE TOP BATTCAR L140 M16 FAST PIN	-	PF1804898	0.750	156
BALL BEARING BATTCAR L110 M16 + FAST FUSE	-	PF1804894	0.532	126
BALL BEARING BATTCAR L110 M16 + FAST FUSE	-	PF1804895	0.575	156
BALL BEARING BATTCAR REINFORCED L110 M16	-	PF1804896	0.580	126
BALL BEARING BATTCAR REINFORCED L140 M16	-	PF1804897	0.637	156
TACK OR REEF CARS				
TACK / REEF CAR L140	STD	PF1804686	0.481	140
INTERMEDIATE CARS				
INTERMEDIATE CAR 70MM PA66	-	PF1803454	0.100	70
INTERMEDIATE CAR 70MM	STD	PF1804688	0.204	70
ACCESSORIES				
TRACK JOINER 100MM	STD	PF1804546	0.730	100
REINFORCED INSERT 100MM	-	PL1804546	0.730	100
KMS POSITION SENSOR + 90° PLUG	-	PF1804793	x	x
NEW POSITION SENSOR DISPLAY	-	MP1804795	x	x
TRACK DOOR - CAR CHARGER	STD	PF1804547	0.298	500
HIGH LOAD STROP FOR GAFF LOCK	-	MP1804828	0.500	200
GAFF LOCK ONLY	-	PF1804749	1.100	197
TRACK ENDSTOP x 1	-	PF1804763	0.099	60
MAINSAIL HEAD PLATE	-	PF1804750	2.400	300
BATTEN RECEPTACLES				
BATTEN RECEPTACLE 30x20 M16 (ALU)	-	PF1612889 [M16]	0.690	120
BATTEN RECEPTACLES 39x26 M16 (ALU)	-	PF1812883 [M16]	0.735	120
BATTEN RECEPTACLE "ROCKET" 39x26 (ALU)	-	PF1814893 [M16]	0.370	120

- > Track lengths are available in 3 or 6 meters or custom.
- > A track section can be ordered with reinforced and enlighthed sections.
- > The standard batten car screw is M16 but can be ordered with M12 or M14.
- > Our mast cars can be installed on many competitor tracks. Please ask us!
- > You can use ball bearing and friction cars on the same track.
- > Batten receptacles can be ordered for others batten models.

© Rachel Pugh/Southern Wind





© Maxi yacht "Hetairos" Baltic Yachts

MODEL	PART NUMBER	WEIGHT (Kg)	HEIGHT (mm)
TRACKS			
STANDARD 48MM TRACK 3M	PF1004550 [3M]	1,490	3000
REINFORCED 48MM TRACK 3M	PF1004953	1,490	3000
ENLIGHTED 48MM TRACK 3M	PF1004954	1,245	3000
EXTRA ENLIGHTED 48MM TRACK 3M	PF1004955	1,050	3000
LOCKING AREA	PF1004956	1,205	800
HEADBOARD CARS			
HEADBOARD CAR	PF1004912	2,500	280
HEADBOARD CAR + LOCK	PF1004957	2,800	400
BATTEN CARS			
TOP BATTCAR FAST 140MM M18 (FAST PIN)	PF1004913	1,050	140
BATTCAR REINFORCED 140 MM M18	PF1004914	0,850	140
INTERMEDIATE / REEF / TACK CARS			
INTERMEDIATE CAR 70MM	PF1004915	0,290	70
INTERMEDIATE CAR 110MM	PF1004916	0,450	110
TACK / REEF CAR 140MM	PF1004917	1,130	140

All cars are available with ball bearings.
KMS100 is an ultra customizable range of tracks and cars.
Call us to share your project.

Contact us

Tanguy de LARMINAT - **Commercial & Marketing Director**

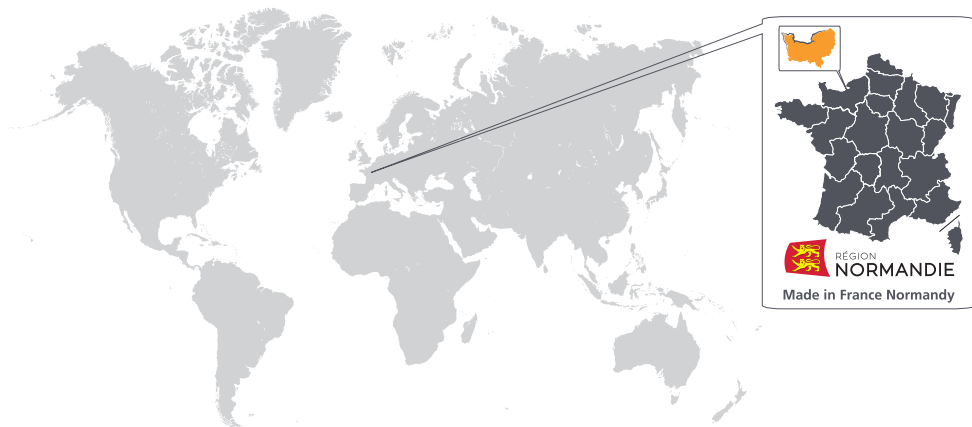
Jean Philippe CONNAN - **Design Office Engineer / Racing Project Manager**

Nicolas COMBY - **Sales manager (International)**

Alois Kerduel - **Sales manager (France)**

Worldwide coverage

16 years sailing the seas and oceans of the world



- **Distribution network in 48 countries**
- **70% sales income outside of France**

Karver Systems

Zone Technique Industrielle Portuaire

Avenue Marcel Liabastre 14600 HONFLEUR - FRANCE

Email: contact@karver-systems.com

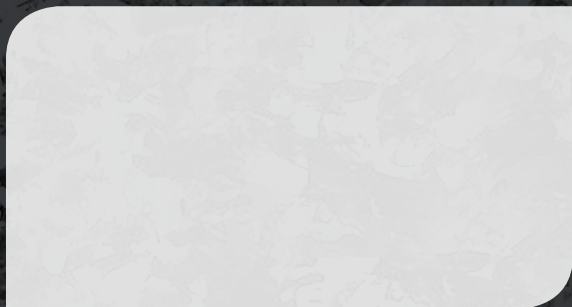
Tel: + 33 (0)2 31 88 37 98 - Fax : + 33 (0)2 31 88 56 43

Visit our new Website

Follow us on Facebook, You Tube & Pinterest

INFO, VIDEOS AND DEALERS AT KARVER-SYSTEMS.COM





KARVER 
PURE PERFORMANCE DECK & MAST GEAR

karver-systems.com



[KarverSailing](https://www.facebook.com/KarverSailing)



[.com/KarverSailing](https://www.youtube.com/KarverSailing)