



SAFETY / PERFORMANCE / DESIGN



The UK's Premier Watersports Equipment

At Crewsaver we are proud of our Lifejacket heritage which has set the benchmark for quality and performance over many years.

The latest Lifejacket range has once again raised the bar on Lifejacket safety, comfort and style. Developed to the highest standards of research, design and manufacture by a devoted team of watersports enthusiasts, these Lifejackets enable the wearer to enjoy their sport or work with total peace of mind.

Our products have also been adopted across a diverse range of commercial sectors as well as by many prestigious institutions such as the RNLI, MoD and Emergency services.

The Complete Range

Crewsaver & The RNLI	4-5	Crewfit 150N Lifejackets	14-15	150N Airfoam Lifejackets	22-23
Why Choose Crewfit?	6	Crewsaver Fishing Range	16-17	100N Foam Lifejackets	24-25
What's In A Crewfit Inflatable Lifejacket?	7	Inflatable Lifejacket Re-arming & Replacement Packs	18	CE Categories	26
Which Lifejacket?	8	Re-arming Your Lifejacket	19	Servicing Recommendations	27
Inflation & Harness Options	9	Inflatable Lifejackets Accessories	20		
Crewfit 290N & 190N Lifejackets	10-13	Crewsaver Safety Lines & Harnesses	21		



Crewsaver & The RNLI

Crewsaver, the leading lifejacket and water-sports equipment manufacturer, has renewed its long-standing partnership with the Royal National Lifeboat Institution (RNLI).

For many years the RNLI's operational crews have put their trust in Crewsaver equipment when saving lives at sea. Crewsaver has built a worldwide reputation for the performance, reliability and quality of its lifejackets and the company has worked closely with the RNLI to design and develop products that can withstand the rigours of both offshore and coastal rescue work.

These products were designed, tested and developed collaboratively, using RNLI crew members in testing. The first lifejacket is for use on all-weather lifeboats. The second is for use on inshore lifeboats. Designed for maximum safety and comfort, these lifejackets ensure the crews are fully protected yet free to move and swim, including in the toughest sea and weather conditions.

Crewsaver has also been recently selected by the Royal National Lifeboat Institution (RNLI) as its Supplier of the Year for 2010.

Supporting the RNLI and their work is important to our company and we are very pleased to renew our relationship with such a trusted and respected charity. Both our organisations share the same commitment to safety afloat whether it is learning about water safety or making sure people wear the appropriate type of lifejacket.



Why choose Crewfit?

Representing the best in British quality, performance and value.

- **Design** – Crewfit Lifejackets are lightweight, comfortable and unobtrusive.
- **Style** – the newly developed Crewfit 190N, with its sleek design, colours and graphics, will ensure they are worn at all times.
- **Service** – the best you can expect from an award winning manufacturer and a global network of service stations.
- **Support** – professional advice from an experienced Sales office and an extensive worldwide network of chandlers. **Customer Service Number: 023 9250 5130**

Are they comfortable?

- Crewsaver Lifejackets are fitted with adjustable straps and belts, allowing them to be fitted to a vast range of sizes and still allowing total freedom of movement.
- Additionally the adjustment system stops the Lifejacket riding up in the water making donning easier and ensuring the most comfortable and secure fit.

- Location Toggles (fitted to some models) – allow the lifejacket to be attached to a jacket or foul weather gear for easy donning.

How safe are they in the water?

- A strong lifting becket enables speedy recovery.
- Non-clog whistle, for attracting attention.
- All Lifejackets are approved to European Standards.
- High frequency welded and double inflation tested inflation chamber.
- Inflation chamber constructed from high-visibility polyurethane with industrial grade SOLAS Approved reflective tape for additional visibility.
- Highly durable and abrasion resistant outer cover with a protective coating to guard against oil and chemical contamination.
- Factory fitted thigh straps stop the jacket riding up in the water and by doing this the wearer is lifted higher and has more mobility.

- Oral inflation tube for manual topping up.
- An optional Lifejacket Light and Sprayhood can be fitted.

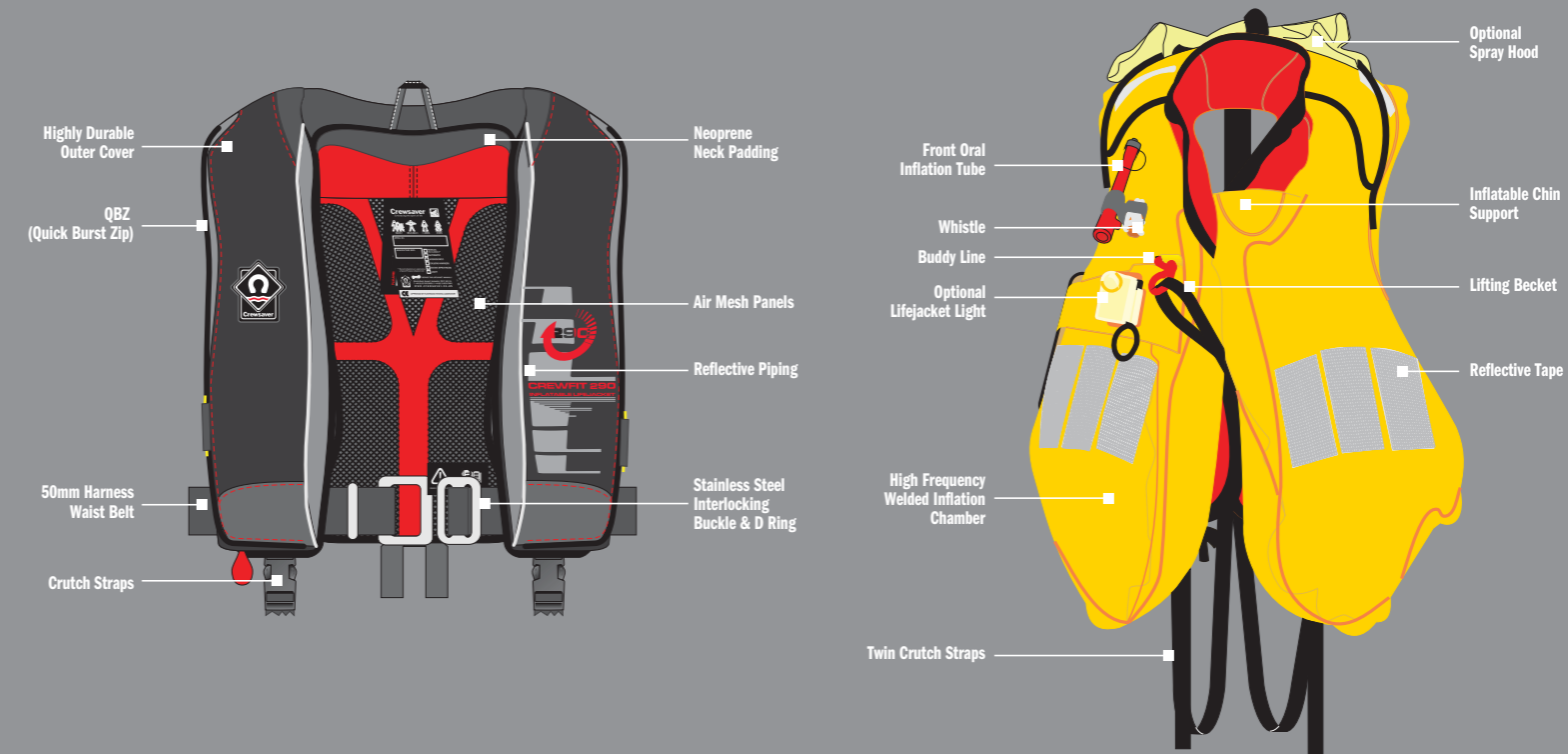
Crewsaver recommend a minimum annual inspection as detailed in the Lifejacket user manual and website. If the Lifejacket is used frequently or for commercial purposes, a more regular inspection is recommended.

What does a Crewfit offer?

- **Safety** – Crewsaver Lifejackets are designed to far exceed the requirements of EU legislation.
- **Reassurance** – only the best quality materials and parts are used in its construction.
- **Confidence** – the Crewfit is relied upon by professionals around the world.
- **Peace of mind** – thorough testing and sampling of all components used in manufacture gives us the confidence in our product to provide a three year guarantee with each Lifejacket.

What's in a Crewfit Inflatable Lifejacket?

Crewfit 290N Lifejacket Advanced with Harness.



Which Lifejacket?

The decision as to which Lifejacket you should purchase depends very much on the style, location and conditions of boating you intend on doing. The following pages will help you choose the right buoyancy category, inflation mechanism and harness option to suit your requirements.



290N Inflatable Lifejackets

These are the highest performance lifejackets available from Crewsaver and are designed for offshore and ocean sailing. The Crewfit 290N lifejackets are ergonomically shaped and extremely lightweight for complete freedom of movement. Their high buoyancy offers maximum protection when sailing in severe weather conditions and are also the lifejacket of choice when wearing heavy waterproof or foul weather clothing.



190N Inflatable Lifejackets

These lifejackets are super comfortable and sleek and therefore suitable for coastal or offshore racing in all but the most severe conditions. Although still classed under the 150N category they offer increased levels of safety and reassurance to the user and provide faster turning times, with a wider range of clothing.



150N Inflatable Lifejackets

These Lifejackets are ideal for everyday use and for cruising, coastal and offshore sailing in clear weather conditions. This category includes the range of Crewfit 150N inflatable lifejackets, adult and Junior sizes. The junior Crewfit model is suitable for younger crew members, aged from around 5–6 to 12 years old.



150N Air Foam Lifejackets

These Lifejackets have 100N of inherent, permanent buoyancy provided by integral foam. An additional inflation chamber allows the buoyancy to be upgraded to 150N using an oral inflation tube. When inflated they are suitable for use in all conditions.

The Seababy/Seatoddler/Seachild range provide Lifejacket protection for the smaller crew members, while still allowing freedom of movement and comfort.



100N Foam Lifejackets

These products are great for sheltered and coastal waters and can be seen on the river bank, canal side, beach or marina. The 100N foam Lifejacket has inherent buoyancy provided by integral foam, giving instant reassurance and security. This style of Lifejacket has no inflation chambers and is perfect for encouraging people to get on or in the water and gain confidence. All sizes come with fitted thigh straps which need to be worn for the best performance of the jackets. Smaller sizes have additional built in underseat support to ensure effective buoyancy.

Inflation Options

Hammar Automatic

Available on Crewfit 290N, 275N, 150N and Freedom

The Hammar Inflator gives excellent protection from random activation caused by moisture, rain or wave splash. This is achieved by protecting the water sensitive element with a hydrostatic valve, which operates when submerged in over 10cm of water and, depending upon the Lifejacket style, held there for between 2 to 3 seconds.



- 1 Hammar works on water pressure, only operating when submerged in 10cm of salt or fresh water
- 2 No accidental inflation, even in extreme conditions
- 3 Cylinder is mounted on the inside of the Lifejacket inflation chamber
- 4 Re-arming instructions and key provided with each Re-arming Pack
- 5 Can also be inflated as manual version or orally

Standard Automatic

Available on Crewfit 290N, 275N, 190N and 150N

This inflation option is available on most Crewsaver Inflatable Lifejackets. Inflation occurs automatically when the capsule is immersed.



- 1 Capsule fires within 5 seconds of entry into water
- 2 Mechanism pierces cylinder, inflating Lifejacket
- 3 Can also be inflated as manual version or orally

Manual

Available on Crewfit 290N, 275N, 190N and 150N

All Crewsaver Inflatable Lifejackets can be manually inflated, by the pull of a lanyard. This option allows the wearer to swim without the Lifejacket being activated automatically. This can be useful if you expect to launch or tend a craft in calm waters.



- 1 Pull lanyard
- 2 CO2 cylinder is fired
- 3 Lifejacket inflates
- 4 Delivers full buoyancy in approximately 5 seconds
- 5 Can also be inflated orally

Harness Options

With Harness

In addition to best practice of wearing a Lifejacket at all times, the wearing of a deck safety harness while on a sailing yacht is mandatory at night under RORC (Royal Ocean Racing Club) regulations and highly recommended by all safety at sea organisations whenever there is rough weather. When the harness is attached to the boat via a safety line (see page 21) the chances of the wearer being lost overboard is lessened, making recovery and survival more probable. Lifejackets with deck safety harnesses feature heavyweight webbing and stainless steel fittings, including a 'D' ring to which a safety line can be secured.

1. 50mm shoulder strap harness
2. Coarse webbing so buckles do not slip
3. 50mm nylon harness belt
4. Stainless steel 'D' Ring
5. Stainless steel interlocking buckle



Without Harness

The non-harness version is recommended for situations where being attached to the boat is more dangerous than floating free in the water. Powerboats, speed boats and RIBS (Rigid Inflatable Boats) are all examples where being towed alongside at high speed would be dangerous. The fitting of a safety light on non-harness Lifejackets is highly recommended. Non-harness Lifejackets are lighter in weight and do not have metal fittings or a safety line attachment point.

1. 40mm polyester backstrap
2. Coarse webbing so buckles do not slip
3. Square link and sliding bar belt adjustment
4. Quick lock high strength buckle



Crewfit 290N & 190N Lifejacket Range

Designed to outperform both the existing legislation and the newly introduced BSEN ISO 12402 criteria, we are confident this range raises the bar for Lifejacket performance, comfort, style and durability.

Performance

The Crewfit 190N and 290N range offers a level of protection that is unmatched across today's market. They feature two brand new inflation chamber designs which provide faster turning performance in the event of the wearer being face down and incapacitated in the water. In addition, it lifts the head further from the water whilst maintaining its optimum angle.

Design & Appearance

User comfort has been one of the essential design briefs in the development of these Lifejackets. Ergonomically designed to work with your body's contours the Crewfit 190N and 290N Lifejackets are shorter, lighter and more compact than ever before.

The total freedom of movement that this design gives means this is a Lifejacket you WILL want to wear.

Will They Fit?

Our design team developed an adjustment system that ensures the Lifejacket can be securely fitted safely and easily. Dual side adjusters allow the user to quickly customize the Lifejacket to suit their individual requirements. As with all Crewsaver Lifejackets thigh straps are fitted as standard.

Belt ties on the waist and thigh straps are provided to avoid snagging and enhance style and appearance.

Support & Comfort

The rear of the Lifejacket is ergonomically designed to sculpt around the shoulder area and to ensure that any load is distributed evenly across the harness.

Strategically placed mesh panels are engineered to allow technical clothing to stay breathable and to facilitate drainage and moisture evaporation.

Sprayhood & Light

The "Plus" versions of the Crewfit 190N and 290N range are also equipped with an integral spray hood and light. Conveniently stowed into the back of the collar the permanently attached hood is deployed and easily accessible when the Lifejacket inflates. The Lifejacket Light is fully SOLAS approved and features an innovative attachment system to ensure excellent visibility.



Design & Fabric Technology



BS EN ISO12402-2
Approved to the latest British and European standard.



SPRAYHOOD
Fits over the wearer's head to reduce the amount of spray being inhaled.



BUOYANCY CATEGORY
The level of buoyancy that defines each product and the environment they are suitable for.



LIGHT
SOLAS approved lifejacket light.



CYLINDER SIZE
The size of CO2 cylinder used to inflate the lifejacket.



INFLATION MECHANISM OPTIONS
(M) Manual, (A) Automatic, (H) Hammar.

Size Chart – Crewfit 290N & 190N Lifejacket Range

	Body Weight > greater than; < less than	Chest	Minimum Permanent Buoyancy	Minimum Total Buoyancy
Crewfit 290N	>88lbs (>40kg)	86–152cm (34–60")	–	65.2lbs (290N)
Crewfit 190N	>88lbs (>40kg)	86–152cm (34–60")	–	42.7lbs (190N)

Note: All Buoyancy details are minimum buoyancy ex factory. Crewsaver reserves the right to change specifications without prior notice.



Crewfit 290N Non Harness

High performance 290N inflatable Lifejacket suitable for offshore and ocean sailing. Plus versions include integral spray hood and SOLAS approved lifejacket light.

Hammar:

- 1290-RHAMM
- 1290-RHPLUS

Standard Automatic:

- 1290-ADZAUTO
- 1290-ADZPLUS

Manual:

- 1290-ADZMAN



Crewfit 290N With Harness

High performance 290N inflatable Lifejacket with integrated deck safety harness suitable for offshore and ocean sailing. Plus versions include integral spray hood and SOLAS approved lifejacket light.

Hammar:

- 1291-RHAMM
- 1291-RHPLUS

Standard Automatic:

- 1291-ADZAUTO
- 1291-ADZPLUS

Manual:

- 1291-ADZMAN



Crewfit 190N Non Harness

Lightweight, ergonomic lifejacket with QBZ (Quick Burst Zip) outer cover closure, suitable for coastal or offshore racing. Plus versions include integral spray hood and SOLAS approved lifejacket light.

Standard Automatic:

- 1190-BAZA
- 1190-BZPLUS

Manual:

- 1190-BAZM



Crewfit 190N With Harness

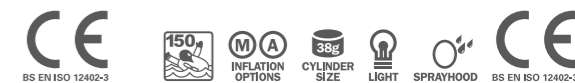
Lightweight, ergonomic lifejacket with integrated deck safety harness and QBZ (Quick Burst Zip) outer cover closure. Suitable for coastal or offshore racing. Plus versions include integral spray hood and SOLAS approved lifejacket light.

Standard Automatic:

- 1191-BAZA
- 1191-BZPLUS

Manual:

- 1191-BAZM



Crewfit 150N Lifejackets

Design & Fabric Technology



EN 396
Approved to British Standards.



SPRAYHOOD
Fits over the wearer's head to reduce the amount of spray being inhaled.



BUOYANCY CATEGORY
The level of buoyancy that defines each product and the environment they are suitable for.



LIGHT
SOLAS approved lifejacket light.



CYLINDER SIZE
The size of CO2 cylinder used to inflate the lifejacket.



INFLATION MECHANISM OPTIONS
(M) Manual, (A) Automatic, (H) Hammar.

Size Chart – Inflatable Lifejackets

	Body Weight > greater than; < less than	Chest	Minimum Permanent Buoyancy	Minimum Total Buoyancy
Junior 150N	44–110lbs (20–50kg)	66–86cm (26–34")	–	22.4lbs (100N)
Short Adult	>88lbs (>40kg)	86–127cm (34–50")	–	35.0lbs (156N)
Adult 150N	>88lbs (>40kg)	86–127cm (34–50")	–	35.0lbs (156N)

Note: All Buoyancy details are minimum buoyancy ex factory. Crewsaver reserves the right to change specifications without prior notice.



Crewfit 150N

The Crewfit 150N lifejacket range offers a wide range of variations and is ideal for everyday use.

Hammar:

- Non Harness ■ 1058–RADH ■ 1058–BADH
- Harness ■ 1060–RADH ■ 1060–BADH

Standard Automatic:

- Non Harness ■ 1058–RADA ■ 1058–BADA
- 1058–RSAA (Short Adult)
- Harness ■ 1060–RADA ■ 1060–BADA
- 1060–RSAA (Short Adult)

Manual:

- Non Harness ■ 1058–RADM ■ 1058–BADM
- 1058–RSAM (Short Adult)
- Harness ■ 1060–RADM ■ 1060–BADM
- 1060–RSAM (Short Adult)



Crewfit 150N Junior

The Crewfit 150N Junior is especially designed for younger children (approx. 6–12 years old) includes an anti-tamper mechanism and factory fitted thigh-straps.

Standard Automatic:

- Non Harness ■ 1058–JUN ■ 1058–BJUN
- Harness ■ 1060–JUN ■ 1060–BJUN



Crewsaver Fishing Range

Designed to meet the needs and technical requirements of an enthusiastic angler, the Crewsaver Fishing Range provides practicality, safety and support.

Design & Fabric Technology



BS EN ISO 12402-2

ISO 12402-2 & ISO 12402-5

Approved to the latest British and European standard.



SPRAYHOOD

SPRAYHOOD

Fits over the wearer's head to reduce the amount of spray being inhaled.



EN 393 & EN 396

Approved to British Standards.



INFLATION MECHANISM OPTIONS

INFLATION MECHANISM OPTIONS

(M) Manual, (A) Automatic, (H) Hammar.



BUOYANCY CATEGORY

The level of buoyancy that defines each product and the environment they are suitable for.



FRONT ZIP

FRONT ZIP

Quick, easy & secure closure.



CYLINDER SIZE

CYLINDER SIZE

The size of CO2 cylinder used to inflate the lifejacket.



ADJUSTMENT FEATURES

ADJUSTMENT FEATURES

Various adjusters to guarantee a bespoke fit and extreme comfort.



LIGHT

LIGHT

SOLAS approved lifejacket light.



Crewfit 150N

An ideal everyday use lifejacket, developed following the established Crewfit 150N design but with a green outer cover.

Standard Automatic:

■ 1058-GADA

Manual:

■ 1058-GADM



Crewfit 290N

Lightweight, hard wearing, high performance Lifejacket developed using the Crewfit 290N design but with a green outer cover.

Standard Automatic:

■ 1290-GAUTO

Manual:

■ 1290-MAN



Ettrick 70N

70N fishing Buoyancy Aid with adjustable shoulders, sides and waist. Expanding front pockets with attachment clips.

Sizes: S/M, M/L, XL

Colours: ■ 2369



Teviot

Multi pocket zipped fly fishing waistcoat with 50N inherent foam buoyancy and additional inflatable chamber bringing its total buoyancy up to 120N.

Sizes: S, M, L, XL, XXL

Colours: ■ 2379



Carriers

50N front zip Buoyancy Aid with adjustable waist and elasticated shoulders. Inner card pocket for fishing permits.

Sizes: Junior, S/M, M/L, XL

Colours: ■ 2524



Inflatable Lifejacket Re-arming & Replacement Packs



Standard Re-arming Pack

- Replacement capsule and CO2 cylinder
- Supplied with fitting instructions
- Fits Crewsaver Standard Automatic Lifejackets
- Check Lifejacket for size of cylinder required

For Serial Numbers starting L

- 11035 23g (Junior)
- 11036 33g (150N)
- 10007 38g (190N)
- 11037 60g (275N/290N)

For Serial Numbers starting with number 0 to 9 or letter R

- 10018 23g (Junior)
- 10019 33g (150N)
- 10475 60g (275N)



Manual Re-arming Pack

- Replacement CO2 cylinder
- Supplied with fitting instructions
- Fits Crewsaver Manual Lifejackets
- Check Lifejacket for size cylinder required

- 10479 23g (Junior)
- 10014 33g (150N)
- 10034 38g (190N)
- 10470 60g (275N/290N)



Hammar Re-arming Pack

- Replacement Hammar Head and CO2 cylinder
- Supplied with fitting instructions and key
- Fits all Crewsaver Hammar Lifejackets
- Check Lifejacket for size of cylinder required
- 33g fits 150N Models, 60g fits 275N Models

For Serial Numbers starting with number 0 to 9 or letter R

- 11010 33g (150N)
- 11011 60g (275N)

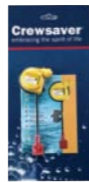


MA1 Hammar Re-arming Pack

- Replacement Hammar Head and CO2 cylinder
- Supplied with fitting instructions and key
- Fits all Crewsaver Hammar Lifejackets
- Check Lifejacket for size of cylinder required
- 60g fits 275 and 290N Models

Only for Serial Numbers starting with W

- 11030 60g (275N/290N)



Hammar Manual Capsule & Hammar Auto Capsule

- Manual Kit converts Hammar Automatic to Manual operation
- Auto Kit has replacement Head for time expired units
- Kit does not include replacement cylinder
- Purchase a Manual Re-arming pack, if replacement gas cylinder is required
- Includes key and instructions
- Fits all Crewsaver Hammar leisure Lifejackets

- 11012 (Hammar Manual Kit)
- 11014 (Hammar Auto Kit)



MK5i Auto Capsule

- Replacement Capsule
- Supplied with fitting instructions
- Fits Crewsaver Standard Automatic Lifejackets

For Serial Numbers starting L

- 10062



MK3A Auto Capsule

- Replacement Capsule
- Supplied with fitting instructions
- Fits Crewsaver Standard Automatic Lifejackets

For Serial Numbers starting with number 0 to 9 or letter R

- 10061



Re-arming your Lifejacket

All Crewsaver Inflatable Lifejackets are handmade in the United Kingdom and have been thoroughly tested to ensure they reach you in perfect working order. This includes two inflation tests. All Crewsaver Lifejackets carry the CE Mark and are fully approved to the European standards.

This chart will help you to find the right Replacement Cylinder, Re-arming Pack and Replacement Capsule for your Lifejacket. Please feel free to contact us if you have any questions.

Lifejacket Type	Replacement Cylinder	Re-arming Pack	Replacement Capsule
150N Junior Crewfit			
Serial Numbers Starting with 0 to 9 or R	10479	10018	10061
Serial Numbers Starting with L	10479	11035	10062
150N Manual Crewfit			
All	10014	10014	N/A
150N Standard Automatic Crewfit			
Serial Numbers Starting with 0 to 9 or R	10014	10019	10061
Serial Numbers Starting with L	10014	11036	10062
150N Hammar Crewfit & Freedom			
All	N/A	11010	11014
190N Junior Crewfit			
Serial Numbers Starting with L	10479	11035	10062
190N Standard Automatic Crewfit			
Serial Numbers Starting with L	10034	10007	10062
275N/290N Manual Crewfit			
All	10470	10470	N/A
275N/290N Automatic Lifejackets			
Serial Numbers Starting with 0 to 9 or R	10470	10475	10061
Serial Numbers Starting with L	10470	11037	10062
275N/290N Hammar Crewfit			
Serial Numbers Starting with 0 to 9 or R	N/A	11011	11014
Serial Numbers Starting with W	N/A	11030	N/A

Inflatable Lifejackets Accessories

Crewsaver produce a full range of accessories to complement your Lifejacket. Where necessary, detailed instructions are supplied with each accessory pack. These can be found at your local Crewsaver stockist.



Lifejacket Spray Hood

- Stored in a pouch on the waist belt
- Fits over the wearer's head and the inflated Lifejacket
- Reduces spray being inhaled
- Makes the wearer more visible

- 10040 (not suitable for Crewfit 290N range)
- 10050 (not suitable for Crewfit 290N range)



Flare Pocket

- Holds a single day/night flare (not provided)
- Fits onto the Lifejacket waist belt
- Flare secured in pocket by Velcro flap

- 10303 Red Outer (up to 35mm Dia x 190mm)
- 10304 Red Outer (up to 50mm Dia x 150mm)



Lifebuoy Light

- Operates automatically when thrown overboard with a lifebuoy in a man-overboard emergency
- Advanced LED technology
- Enhanced reliability

10223



Whistle

- Spare/replacement whistle
- Non-clog design
- EN 394 Approved

10677



Thigh Straps

- Hold the wearer in a safer position when in the water
- Can be retro fitted to all Crewsaver Inflatable Lifejackets
- Detailed instructions included

10032



Lifejacket Light

- Approved to IMO SOLAS, MED, MCA and RORC requirements
- Flashing "all around" light
- Battery powered
- Detailed instructions included

10220



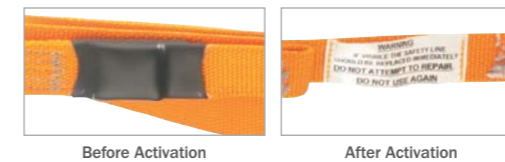
Retro Tape Kit

- Self-adhesive SOLAS approved retro-reflective tape
- 8 x 10 cm strips
- Can be retro fitted to any product to improve visibility

10022

Safety Lines

Crewsaver manufacture a comprehensive range of Safety Lines with 25mm webbing, CE Approved to European Standards, that can be worn with all types of Crewsaver Lifejackets and Harnesses. They can be purchased with either an Asymmetric or a Self Locking hook attached. The Self Locking version cannot be opened by accident and is a standard fit to our child safety lines.



Load Indicator Option

Safety lines can be bought either with or without a load indicator.

- The indicator activates when the line is placed under an excessive load (7000 – 9000 Newtons)
- When Warning Label is exposed, on indicator versions, the safety line should be replaced as soon as possible

Self Locking with or without Load Indicator

With Load Indicator

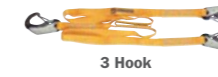
- 3035-SL1 2 Hook, 1 metre
- 3035-SL2 2 Hook, 2 metres
- 3035-SL3 3 Hook, 2 metres
- 3035-ELS 2 Hook Elasticated 2 metres



2 Hook (1 or 2m)

Without Load Indicator

- 3030-SL2 2 Hook, 2 metres
- 3030-SL3 3 Hook, 2 metres
- 3030-ELS 2 Hook Elasticated 2 metres



3 Hook



2 Hook Elasticated

Child Self Locking

- 3030-CH1 1 Hook, 1.5 metre



Asymmetric

- 3030-AS2 2 Hook, 2 metres
- 3030-ELA 2 Hook Elasticated 2 metres



2 Hook



2 Hook Elasticated

Harnesses

Available from Crewsaver is a full range of 50mm webbing Harnesses, CE Approved to European Standards. High quality 316 Marine Grade stainless steel is used to form the 'D' rings. All models also have back separators to stop straps from getting tangled and shoulder straps to stop them from slipping off.



Sovereign Adult

- 50mm nylon webbing
- Anti-tangle back panel keeps straps in place
- Stainless steel buckle and 'D' ring attachment point
- Automatic machine stitching for consistent quality and strength
- Contrast coloured stitching to ease inspection and to comply with CE Standards

10089 Adult



Venturer Child/Junior

- 35mm nylon webbing
- Anti-tangle back panel keeps straps in place
- Stainless steel shoulder adjuster slides and buckle
- Fully adjustable shoulder straps and waist
- 'D' ring attachment point
- Can be worn back or front
- Contrast coloured stitching to ease inspection and to comply with CE Standards

3011 Child, Junior



Crewlift 40 Bosuns Chair

- PVC coated nylon
- Two stainless steel attachment welded triangles
- Removable wooden seat
- Adjustable waist belt and thigh straps
- Detachable tool pouch with webbing tool rack

11301

150N Air Foam Lifejackets

The range of products provides protection for all crew members, whilst still allowing freedom of movement and comfort.

Design & Fabric Technology



EN 393
Approved to British Standards.



ADJUSTMENT FEATURES
Various adjusters to guarantee a bespoke fit and extreme comfort.



BUOYANCY CATEGORY
The level of buoyancy that defines each product and the environment they are suitable for.



FRONT ZIP
For easy donning.



SUPERSOFT FOAM
Soft 3D foam shaped to your body for extreme comfort.

Size Chart – 150N Air Foam Lifejackets

	Body Weight > greater than; < less than	Chest	Minimum Permanent Buoyancy	Minimum Total Buoyancy
Supersafe 150N (Baby, Child)	<44lbs (<20kg)	50–58cm (20–23")	6.7lbs (30N)	10.0lbs (45N)
Supersafe 150N (Large Child, Junior)	<44lbs (<20kg)	58–75cm (23–30")	6.7lbs (30N)	10.0lbs (45N)
BSI Child	44–88lbs (20–40kg)	65–85cm (26–33")	10.3lbs (46N)	22.3lbs (99N)
BSI Adult	>88lbs (>40kg)	75–100cm (30–39")	13.8lbs (81N)	35.0lbs (156N)
BSI/DOTp Adult Large	>88lbs (>40kg)	85–125cm (33–49")	20.0lbs (89N)	40.0lbs (178N)

Note: All Buoyancy details are minimum buoyancy ex factory. Crewsaver reserves the right to change specifications without prior notice.



Seababy/Seatoddler/Seachild

Children's lifejacket with integrated safety harness. 100N permanent foam buoyancy with additional oral inflation chamber for extra protection.

- Colours:**
- 10158 Seababy
 - 10159 Seatoddler
 - 10141 Seachild



BSI

Durable and easy to use lifejacket, used by many commercial organisations, charter companies and schools.

- Colours:**
- 1010-CH (Child)
 - 1010-AD (Adult)
 - 1010-DOT (Large Adult)
 - 10005 (DOT Large Adult With Light)



Crib

Inherent buoyant baby life preserver, with adjustable length to various sizes and webbing with hand loop for securing to an adult.

- Colours:**
- 10142
 - 10145 (With Light)



Petfloat

Petfloat that is suitable for most breeds of dogs and cats. It's easily adjustable and quick to fit with integral dual lifting handles and plastic ring for lead attachment.

- Sizes:**
- | | | |
|----|---------|---------|
| XS | 24–30cm | 9–12" |
| S | 28–35cm | 12–114" |
| M | 35–45cm | 14–18" |
| L | 45–55cm | 18–22" |
| XL | 55–65cm | 22–26" |

- Colours:**
- 2370





Supersafe

Children's lifejacket with built in safety harness for attaching the wearer to a boat via a safety line. Complete with crutch straps. Child and Baby sizes have built in underseat support.

Sizes: Baby, Child, Large Child, Junior

Colours: 2280



Euro 100N

Children's non harness Lifejacket with supersoft foam for comfort. Complete with crutch straps. Child and Baby sizes have built in underseat support.

Sizes: Baby, Child, Large Child, Junior

Colours: 2260



Spiral

Modern and stylish, inexpensive entry level childrens lifejacket.

Sizes: Baby, Child, Large Child, Junior, S, M, L, XL

Colours: 2820

2830



Seafloat

Classic safety product with 100N buoyancy.

Sizes: S, M, L, XL

Colours: 2240



100N Foam Lifejackets

Products have inherent buoyancy provided by integral foam, giving instant reassurance and security. They are perfect for encouraging people to gain confidence on or in the water.

Design & Fabric Technology

EN393 APPROVED EN 393 Approved to British Standards.

BUOYANCY CATEGORY The level of buoyancy that defines each product and the environment they are suitable for.

SUPERSOFT FOAM Soft 3D shaped foam for comfort.

ADJUSTABLE WAIST For a comfortable, secure fit.

FRONT ZIP For easy donning.

Size Chart – 100N Foam Lifejackets

	Body Weight > greater than; < less than	Chest	Minimum Permanent Buoyancy	Minimum Total Buoyancy
Baby	<33lbs (<15kg)	40–57cm (16–22")	6.7lbs (30N)	–
Child	<44lbs (<20kg)	53–61cm (21–24")	6.7lbs (30N)	–
Large Child	44–66lbs (20–30kg)	57–70cm (22–27")	9.0lbs (40N)	–
Junior	66–88lbs (30–40kg)	69–79cm (27–31")	11.0lbs (50N)	–
Adult Small	88–132lbs (40–60kg)	86–96cm (34–38")	15.7lbs (70N)	–
Adult Medium	110–154lbs (50–70kg)	97–107cm (38–42")	18.0lbs (80N)	–
Adult Large	>88lbs (>40kg)	107–117cm (42–46")	22.4lbs (100N)	–
Extra Large	>88lbs (>40kg)	117–127cm (46–50")	22.4lbs (100N)	–



Note: All Buoyancy details are minimum buoyancy ex factory. Crewsaver reserves the right to change specifications without prior notice.

CE Categories

It is important that you pick the correct CE Category to suit your type of activity and experience. If you are at all concerned please contact Crewsaver for more information.

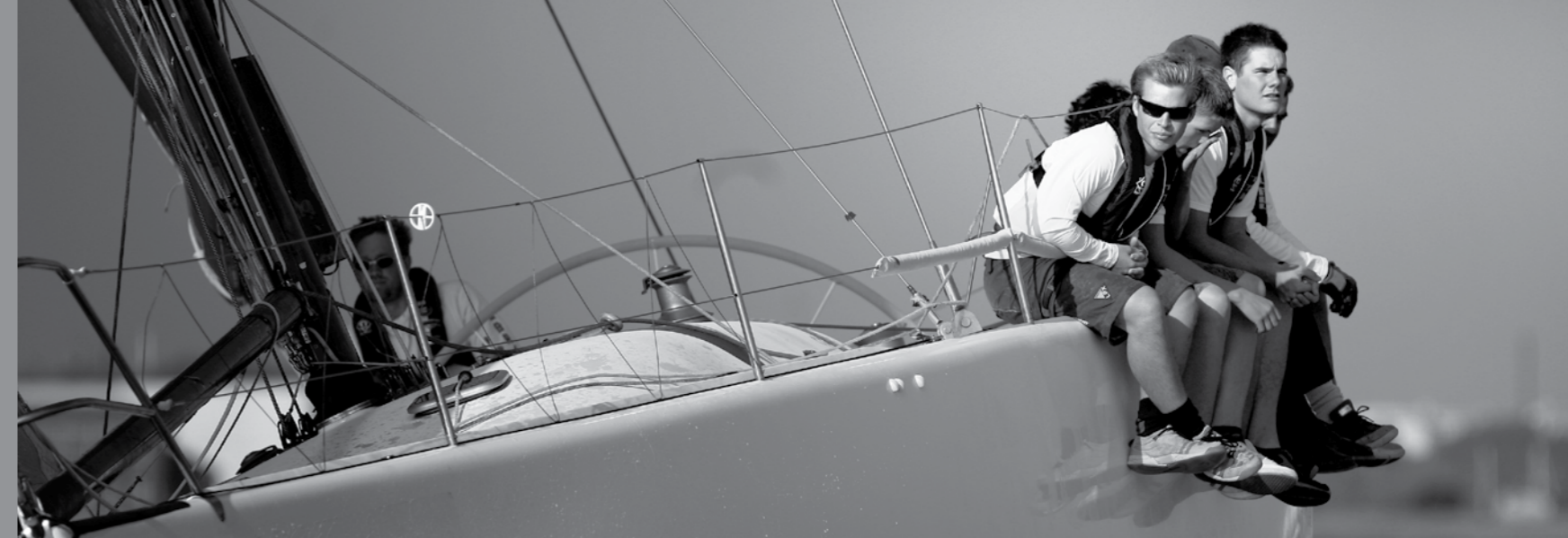
Lifejackets and Buoyancy Aids are tested and rated to specific European Standards and split into CE categories. These are the universal criteria that define each product and the environment they are suitable for. Crewsaver's range is split into four CE categories: 275N, 150N, 100N and 50N.

Products newly designed, developed and introduced to market will now carry the CE mark and approved to BSEN ISO 12402. Products manufactured to previous standards are still suitable for use.

Buoyancy Rating	62lbs/28kg Buoyancy	33lbs/16kg Buoyancy	23lbs/11kg Buoyancy	11lbs/5.5kg Buoyancy
The level of lift a Personal Flotation Device (PFD) gives a body in the water is known as the buoyancy rating.				
Type	275 Newton Air ONLY Lifejacket	150 Newton Air ONLY Lifejacket Air FOAM Lifejacket	100 Newton FOAM Lifejacket	50 Newton FOAM Buoyancy Aid
Page Number	Inflation Options Page 9 Webbing Options Page 9 Products Pages 12, 17	Inflation Options Page 9 Webbing Options Page 9 Products Pages 13, 15, 17, 23	Products Page 24	Products Page 17
Activity	<ul style="list-style-type: none"> ■ Yachting ■ Sportsboat ■ Powerboat (Including RIBs) 	<ul style="list-style-type: none"> ■ Yachting ■ Sportsboat ■ Powerboat (Including RIBs) 	<ul style="list-style-type: none"> ■ Dinghy Sailing ■ Sportsboat ■ Powerboat (Including RIBs) 	Mainly used for active surface watersports such as: <ul style="list-style-type: none"> ■ Dinghy Sailing ■ Canoeing ■ Kite Surfing
Suitability	Swimmers & non-swimmers	Swimmers & non-swimmers	Swimmers & non-swimmers Inshore & coastal waters	Only suitable for competent swimmers
Conditions	A high performance device for offshore and severe conditions, when maximum protection is required or where heavy waterproof clothing is worn.	For use in all but the most severe conditions.	They give a reasonable assurance of safety from drowning in relatively calm water.	Sheltered water use where help is close at hand.
Assurance	They give improved assurance of safety from drowning, to people who are not able to help themselves.	They will give reasonable assurance of safety from drowning, to people not fully capable of helping themselves.	They give a reasonable assurance of safety from drowning in relatively calm water.	Sheltered water use where help is close at hand.
Protections	While they cannot be guaranteed to self-right an unconscious user wearing heavy waterproofs, the buoyancy they provide should ensure they will, in the great majority of cases.	May not immediately self right an unconscious user wearing heavy waterproof clothing. Equivalent performance to previous BSI Approved Lifejackets.	Not guaranteed to self right an unconscious user wearing waterproof clothing and should not be expected to protect the airway of an unconscious person in rough water.	Only provides support to conscious people who can help themselves.
EN (European Standard) Number	EN 12402-2	EN 12402-3	EN 12402-4	EN 12402-5

All Crewsaver Lifejackets are designed and manufactured to combined British and European standards. All Lifejackets carry the CE symbol which shows that the lifejacket has been independently assessed and approved to these standards by an authorised test house. These standards are intended to ensure that all Lifejackets sold in this country meet very stringent requirements regarding the design, performance, materials and components used and even given guidelines regarding the information to be provided to the customer about the Lifejacket.

The information within this table is a guide only. The final purchasing decision and liability thereof is left to the individual.



Servicing Recommendations

- We recommend that all Crewsaver inflatable Lifejackets are serviced annually by our approved Crewsaver Service Station, detailed below.
- Your Lifejacket is an important piece of technical safety equipment. At Crewsaver we take great care in its manufacture and it is designed so that many parts can be repaired or replaced if damaged. In most cases this avoids the cost of complete replacement.
- If the Lifejacket has been damaged, or you would just like it checked over, we will be happy to inspect, repair and service it for a reasonable charge.
- The complete Lifejacket should be sent, post paid, direct to Crewsaver – not to your Chandler. If you require a quotation before the work is carried out, please include a request with the Lifejacket. Please allow up to 28 days for the work to be completed.
- Under no circumstances should you try to repair a Lifejacket yourself. The glues you use may not be effective and could make further repairs by us impossible.
- If you are in any doubt about its serviceability it should either be replaced or returned to Crewsaver at the address below for testing and repair.

Crewsaver Service Station

Service & Repair Department, Crewsaver, Mumby Road, Gosport, Hampshire PO12 1AQ United Kingdom
Tel: +44 (0) 23 9252 8621 | Fax: +44 (0) 23 9251 0905

Quality Standards

All Crewsaver Lifejackets, Buoyancy Aids, Harnesses and Safety Lines are fully Approved and CE Marked.

What Is Required?

All Crewsaver Lifejackets are designed and manufactured to combined British and European standards. All Lifejackets carry the CE symbol which shows that the lifejacket has been independently assessed and approved to these standards by an authorised test house. These standards are intended to ensure that all Lifejackets sold in this country meet very stringent requirements regarding the design, performance, materials and components used and even given guidelines regarding the information to be provided to the customer about the Lifejacket.

Safety Harnesses

The CEN Standard is based on three main reasons for wearing a deck Safety Harness, e.g. to secure the wearer on deck, prevent them from falling into water and to assist their recovery back onto the deck. They are not intended to prevent falls from a height. The Standard also states that in the case of a combined Lifejacket and Safety Harness, both elements must be tested and have separate CE Approval.

MED Directive

This is the equivalent of the CE Standard for Lifejackets, that must be applied to all SOLAS equipment for use on commercial vessels. Approval to this directive is represented by the ships wheel.

ISO 9001

Crewsaver is approved by Lloyds Register Quality of Assurance to ISO 9001 the scope of which includes the design and manufacture of marine safety equipment. Part of being an ISO 9001 company requires that during the manufacturing stage, critical materials including all components (inflation chamber material, inflation head, components of harness and webbing) are batch recorded. This enables each individual component to be targeted and isolated, should a Quality Control Manager not be 100% certain that it is safe for production use.

How is quality controlled during the manufacturing process?

At Crewsaver the manufacture of life saving equipment is never taken lightly. As legislation toughens, Crewsaver are always one step ahead to ensure that the final product supplied to you is above the basic level of quality required.

Testing is continuous throughout the manufacturing cycle of each inflatable Lifejacket. For example the inflation chambers of the Lifejackets are manufactured in batches. The first inflation chamber from each batch is subjected to a test whereby it is inflated manually to a specified pressure, the equivalent of a double inflation.

When might a Lifejacket double inflate in real use? On sensing danger, and as a precaution, the wearer might inflate the Lifejacket by mouth. If the wearer then enters the water, and the Lifejacket is automatically operated, the CO² cylinder would then discharge into the inflation chamber, thus causing a double inflation.

On completion of the batch each inflation chamber is inflated to 3lb/sq inch and must maintain that pressure for 30 minutes. After the inflation chambers have been sewn into the Lifejackets, the completed Lifejackets are passed to our Packing Department where they are subjected to a further inflation test of 30 minutes at 3lb/sq inch.

Finally each Lifejacket is carefully inspected for any minor flaws or imperfections before it is packed ready to send out.

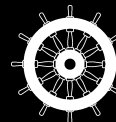
Crewsaver®

Mumby Road, Gosport, Hampshire, PO12 1AQ, United Kingdom

Tel: +44 (0) 23 9252 8621 **Fax:** +44 (0) 23 9251 0905

Web: www.crewsaver.co.uk **Email:** sales@crewsaver.co.uk

Crewsaver and the Crewsaver symbol are registered trade marks of the Survitec Group. Designed and produced by: D&A Design +44 (0)116 254 8507, www.da-design.co.uk Details correct at time of printing, December 2011. We reserve the right to change specifications and prices without prior notice. Every effort has been taken to ensure that the colours and information within this catalogue are as accurate as possible. Copyright of Crewsaver.



Mixed Sources

Product group from well-managed forests
and other controlled sources
www.fsc.org Cert no. SGS-COC-00820
©1996 Forest Stewardship Council

