



EMERGENCY SERVICES

PROVIDING CRITICAL SAFETY SOLUTIONS

www.survitecgroup.com



YOUR SURVIVAL, **OUR TECHNOLOGY**

Survitec Group is recognised as a leader in the supply, inspection, testing and maintenance of safety and survival equipment. We serve a number of markets including the Commercial, Marine, Offshore Oil and Gas, Aviation, Military, Emergency Services, Renewable Energy and Industrial markets.

Survitec Group can offer you an extensive range of products and services but this is not all. We are innovators with a passion for developing new products and services to meet the changing demands of our customers and we pride ourselves on delivering great service.

Although our business interests span many countries and industries, our people share a common focus. We believe in bringing together best-in-class brands so that our customers can benefit from innovative products that have been thoughtfully designed and carefully manufactured to stringent quality standards.



CONTENTS

LIFEJACKETS AND BUOYANCY AIDS	
Crewfit	7
Ergofit	8-9
Offshore 290N	10
Inshore 380N	11
Air Foam Lifejackets – SWR & Harvester	12
Ravine	12
Swift Water Rescue Jacket	14-15
Petfloat	15
Lifejacket Features	16-17
Lifejacket Lights	17
SEARCH AND RESCUE (SAR)	
Air Droppable Liferrafts	18
Survival Suits	19
Life Preservers	20-21
Rescue Boats	22-23
Drysuits	24
Head Protection	25
Bags	25
Pyrotechnics	26
Ice Rescue	27
Heliboat	27
Inflatable Rescue Path	27
SB Rescue Sling	28
Crewsaver Rescue System	29
Ambulance Pouch	29
Animal Rescue Bag	29
Fast Rescue Craft (FRC) CPRD	29
Lifebuoys And Housings	30
Lifebuoy Lights	30
Rescue Lines	31
Stretchers	32
First Aid	32
LIFERAFTS	33
ELECTRONICS	
McMurdo Safety Range	34-37
EMERGENCY	38
TOOLING	39
HEIGHT SAFETY	
Personal Fall Protection Equipment	40-41
Rescue Systems	40-41
Installation, Servicing And Inspection	40-41
Training	40-41
Limpet®	42
LIFTING AND TESTING	43
SAFETY SIGNS AND POSTERS	44-45
TRAINING EQUIPMENT	46-47
ROPE	48-59
TRAINING AND SERVICING & CONSULTANCY	50-51

LIFEJACKETS

With over 160 years' experience in producing life-saving products, Survitec has established an unrivalled range of market leading brands. Our Crewsaver brand has a proud lifejacket heritage which has set the benchmark for quality and performance over many years. Beginning over five decades ago as a niche marine safety business on the south coast of England, Crewsaver is now a global leader, respected for providing the safest and most technically advanced products on the market. Since acquisition by Survitec in 2011, the brand has gone from strength to strength.

Survitec's products and Crewsaver lifejacket range have also been adopted across a diverse range of commercial sectors as well as by many prestigious institutions such as the RNLI, MoD and Emergency Services.



CREWFIT

The classic Crewsaver Crewfit jacket, representing the best in British quality, performance and value.

CREWFIT 150N

- Ideal for everyday use
- Variety of variations to suit all requirements
- Fitted crotch straps
- Easily repackable
- Heavy duty harness belt with stainless steel 'D' ring and buckle (harness version)

CREWFIT 275N

- Ideal for offshore use in severe conditions
- Designed for use with heavy waterproof clothing or equipment
- Fitted thigh straps - including three years guarantee!
- Heavy duty harness belt with stainless steel 'D' ring and buckle (harness version)

CREWFIT 290N

- High performance 290N inflation chamber
- QBZ (Quick Burst Zip) cover system
- Light weight, hard wearing ergonomic cover system
- Heavy duty harness belt with stainless steel 'D' ring (harness version)
- Twin quick adjust buckles

CREWFIT 150N, 275N & 290N FIRE RETARDANT*

- Fitted with a fire retardant outer cover which protects the inflation chamber from any molten splashes and sparks
- Heavy duty harness belt with stainless steel 'D' ring and buckle - Harness version
- SOLAS Approved retro-reflective tape and whistle



CREWFIT 150N WITH HARNESS



CREWFIT 290N WITHOUT HARNESS

PLUS VERSION INCLUDES SPRAY HOOD AND SOLAS APPROVED LIFEJACKET LIGHT



CREWFIT 275N



CREWFIT 150N
FIRE RETARDANT



ERGOFIT

The latest life jacket range has once again raised the bar on Lifejacket safety, comfort and style. Through rigorous testing and retesting to exceed all safety standards, the ErgoFit lifejackets are a must-have for anyone who takes safety on the water seriously.



ERGOFIT 290 OC: Performance without compromise

- This lifejacket is ISO 12402-2 (275N) approved yet offers a superior 290N buoyancy
- Super fast turn speed even when wearing multi-layered ocean clothing
- Exceptional inflation chamber ensures the airway is kept well clear of the water whatever the conditions
- Innovative 3D shaping provides unbeatable custom fit
- Dynamic cutaway design allows full freedom of movement in extreme conditions
- One universal size



ERGOFIT 190 OS: Security as standard.

- This lifejacket is ISO 12402-3 (150N) approved yet offers a superior 190N buoyancy
- Market-leading inflation chamber for super fast turn speed and unrivalled freeboard
- Extremely durable three-layer construction
- Combines the dynamic cutaway design of the ErgoFit 290 Ocean model with 190N buoyancy
- Innovative 3D shaping provides unrivalled bespoke fit
- One universal size



ERGOFIT 190 CS: Top-spec security at an affordable price.

- This lifejacket is ISO 12402-3 (150N) approved yet offers a superior 190N buoyancy
- Market-leading inflation chamber for best-in-class 190N buoyancy
- Average 40 percent more freeboard than standard requirement
- Fast fix rear buckles adjust for exceptional fit and ease of movement
- Easy don with front zip and buckle
- Especially comfortable for women's contours
- The security of a top-spec lifejacket at an affordable price
- One universal size



ERGOFIT SAFETY KNIFE

- Accident-proof safety blade
- Built from durable ABS plastic
- Colour-coded to match your ergofit jacket
- Ergonomically designed for fast release cut
- Perfect size for Ergofit pocket





OFFSHORE 290N

- Designed specifically for use by rescue boat crews in offshore, extreme conditions
- Provides increased performance in the most demanding environments
- High buoyancy level provides added protection
- Automatic and manually operated inflation chambers
- Each chamber is fitted with a 60g cylinder and 3.5psi relief valve ensuring 290N buoyancy is achieved during single or double inflation
- Supplied with UML MK5 Standard Automatic inflation mechanism and Halkey Roberts Manual mechanism
- Integrated deck safety harness, twin flare pockets, spray hood and thigh straps fitted as standard



INSHORE 380N

Often operating in severe weather conditions, the lives of rescue crews depend on proven and reliable safety equipment. The **ILB 380N** has been designed, tested and developed collaboratively with the **RNLI** and is suitable for rescue boat crews of inshore lifeboats or advanced powerboat users.

- Open sides and a versatile adjustment system
- 90N of permanent buoyancy is placed at the front and rear of the lifejacket allowing freedom of movement
- 290N of buoyancy is available when required from a manually operated inflation chamber fitted with a 60g CO2 cylinder
- Fitted as standard with spray hood, integrated deck safety harness, twin flare pockets and thigh straps
- PLB Fastfind fitted on bladder



RAVINE 50N

- Bright colour and reflective panels for excellent visibility
- Multiple front and rear pockets for additional storage
- Harness attachment option
- High buoyancy for maximum safety
- Super soft PVC foam for ultimate comfort



SWR HARVESTER

- Designed for a tough working environment, extremely safe and easy to use
- Buoyancy provided by soft PVC foam panels
- Additional buoyancy provided when the inflator is deployed
- Fitted with quick release belt
- Retro-reflective tape, heavy duty front zip & whistle

Available with Manual or Standard Automatic inflation



HARVESTER 150N

- Designed for a tough working environment, extremely safe and easy to use
- Buoyancy provided by soft PVC foam panels
- Additional buoyancy is provided when the inflator is deployed
- Twin layer protective outer cover
- Retro-reflective tape, heavy duty front zip & whistle

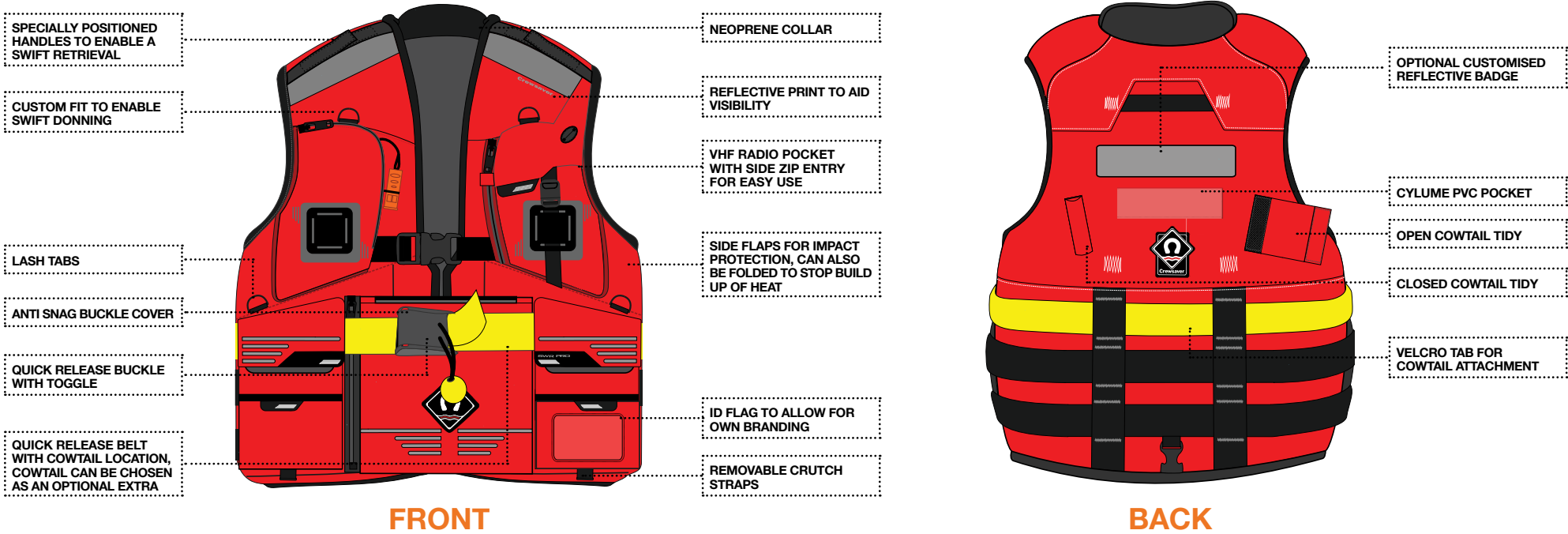
Available with Manual or Standard Automatic inflation





SWIFT WATER RESCUE JACKET

This top of the range 80N Jacket is a multi-purpose rescue and emergency response jacket designed to enable carriage of all accessories you need when conducting a swift water rescue, the jacket can be used for rescuing from the water and from small boats. A user friendly buoyancy aid with waist supports to provide a one size fits all design, making this jacket an easy and efficient choice for the rescue team.



SWIFT WATER RESCUE LITE
The lower spec option provides the ideal low cost solution when extra jackets are required, can be stored easily in all basic tenders ready to be distributed in an emergency situation.

PETFLOAT

- Suitable for most breeds of cats and dogs
- Soft closed cell foam for comfort
- Easily adjustable and quick to fit
- Lifting handle
- Plastic ring for lead attachment



FEATURES

DESCRIPTION	CREWFIT 150N	CREWFIT 275N	CREWFIT 290N	ERGOFIT OCEAN 290N	ERGOFIT OFFSHORE 190N	ERGOFIT COASTAL 190N	OFFSHORE 290N	INSHORE 360N	SWR HARVESTER 150N	HARVESTER 150N	RAVINE 50N	SWIFT WATER RESCUE 80N	SWIFT WATER RESCUE LITE 80N
Buoyancy Rating	150N	275N	290N	290N	190N	190N	290N	360N	150N	150N	80N	80N	50N
Fitted Thigh Straps	✓	✓	✓	✓	✓	✓	✓	✓	✓	✓	✓	✓	
Harness Option Available	✓	✓	✓	STANDARD	STANDARD	STANDARD	✓	✓				STANDARD	
QBZ (Quick Burst Zip)	✓	✓	✓	✓	✓	✓							
Ergonomic Design				✓	✓	✓	✓	✓					
Fire Retardant Outer Option Available	✓	✓	✓										
SOLAS Approved Light	✓	✓	✓	✓	✓	✓	✓	✓	✓	✓		OPTIONAL	
Twin Adjust Buckles			✓	✓	✓	✓						✓	
Spray Hood Option Available	✓	✓	✓	STANDARD	STANDARD	✓	STANDARD	STANDARD					
Firing Systems Available SA = Standard Automatic HAMM = Hammer, M = Manual	SA HAMM M	SA HAMM M	SA HAMM M	SA SAMM	SA HAMM	SA HAMM M	SA & M Combo Standard	M	SA M	SA M	N/A	N/A	N/A

INFLATION OPTIONS

HAMMAR AUTOMATIC
The Hammar Inflator gives excellent protection from random activation caused by moisture, rain or wave splash. This is achieved by protecting the water sensitive element with a hydrostatic valve, which operates when submerged in over 10cm of water and, depending upon the Lifejacket style, held there for between 2 to 3 seconds.



- 1 Hammar works on water pressure, only operating when submerged in 10cm of salt or fresh water
- 2 No accidental inflation, even in extreme conditions
- 3 Cylinder is mounted on the inside of the Lifejacket inflation chamber
- 4 Re-arming instructions and key provided with each Re-arming Pack
- 5 Can also be inflated as manual version or orally

STANDARD AUTOMATIC
This inflation option is available on most Crewsaver Inflatable Lifejackets. Inflation occurs automatically when the capsule is immersed.



- 1 Capsule fires within 5 seconds of entry into water
- 2 Mechanism pierces cylinder, inflating Lifejacket
- 3 Can also be inflated as manual version or orally

MANUAL
All Crewsaver Inflatable Lifejackets can be manually inflated, by the pull of a lanyard. This option allows the wearer to swim without the Lifejacket being activated automatically. This can be useful if you expect to launch or tend a craft in calm waters.



- 1 Pull lanyard
- 2 CO2 cylinder is fired
- 3 Lifejacket inflates
- 4 Delivers full buoyancy in approximately 5 seconds
- 5 Can also be inflated orally

PRO-SENSOR
The Pro Sensor inflation system provides the user one point of status indication, to confirm that the unit has been automatically or manually activated. The unit also provides the added benefit of detecting if the CO2 cylinder has been pierced, eradicating the possibility of accidentally fitting an empty gas cylinder.



LIFEJACKET LIGHTS



Both automatic and manual options are available with various fitting methods. All lights are MED approved and have a 5 year battery life.

SEARCH & RESCUE

Whether you are responding to a vessel in distress, helicopter ditching or a man overboard situation, you don't get a second chance when your life and the lives of others are on the line. For over two decades Survitec has worked closely with the world's most respected Search and Rescue professionals to develop a range of Survival Equipment for those working daily in the most unpredictable and hazardous environments.

AIR DROPPABLE LIFERAFTS

Universally adaptable, configured for use on virtually any rotary or fixed wing aircraft. When an aircraft ditches and the crew and passengers have a matter of seconds to make a decision, it is crucial they are equipped with the very best in lifesaving equipment. In order to improve chances of survival, a liferaft must be designed to incorporate every element specific to an aircraft emergency situation.

Users can select from two types of market leading SAR Liferafts, the unique Heliraft and the popular Aerolite. This presents a wide choice of capabilities for SAR operations, including military, coast guard, offshore oil industry, commercial aviation and civilian emergency situations.

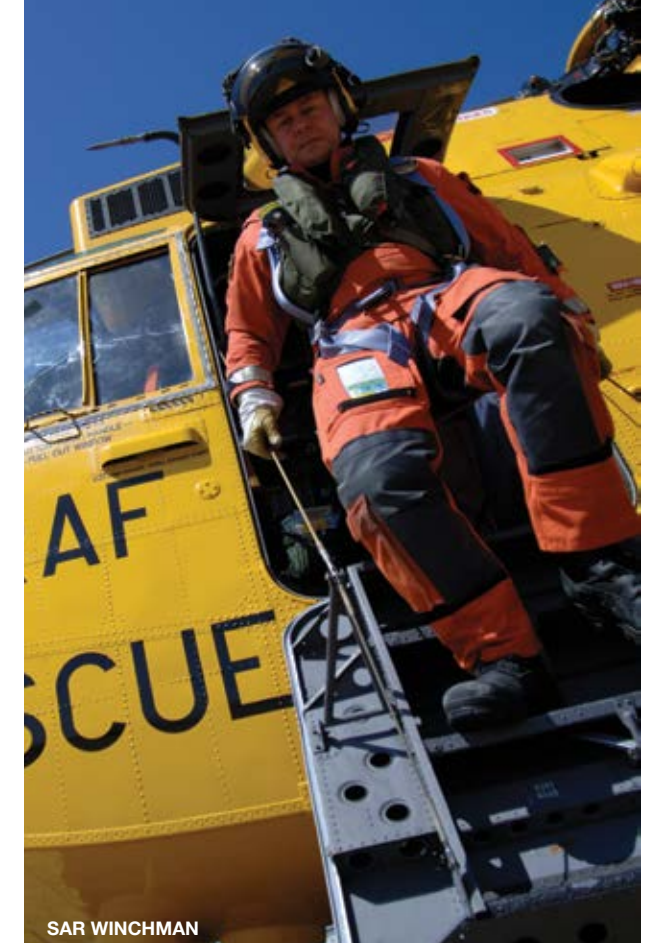
AEROLITE



HELIRAFT



1000 SERIES



SAR WINCHMAN

SURVIVAL SUITS

Emphasis on functionality and reliability whilst minimising bulk and weight burden.

1000 SERIES

With the introduction of additional EASA (European Aviation Safety Agency) regulations in 2006, we commenced development on a new generation of Survival Suit, the 1000 Series. Using the latest offshore sizing information and feedback from offshore workers, we have developed a suit built to fit today's offshore work population. The 1000 Series suit project has since developed a bespoke line of aircrew immersion suits to satisfy the demands of commercial and military helicopter aircrew.

Manufactured utilising the most elite, technologically advanced fabric and components available, the outer shell of the suit is waterproof, breathable and inherently flame retardant. The thermal lining uses state of the-art Outlast® Phase Change Materials (PCM) technology, to improve thermal comfort and reduce thermal stress.

SAR WINCHMAN

Developed as a high specification garment designed to meet the unique demands of helicopter search and rescue Winchman, the SAR Winchman has a long pedigree in the civilian sector, particularly for use by helicopter aircrews and paramedics servicing the offshore oil and gas logistic support worldwide. The optimised design offers maximum flexibility and mobility, whilst the light, breathable and flame retardant fabric offers anti-static properties as well as improved comfort and protection, to satisfy the demands of commercial and military helicopter aircrew.

LIFE PRESERVERS

Security of supply for over five decades with over one million life preservers produced to date. Your life preserver is possibly one of the most important pieces of equipment on board any vessel. So when an emergency arises, it is vital to know that the life preserver you are wearing is reliable, robust and secure. As choice supplier to some of the leading Search and Rescue organisations, we strive to ensure our life preservers meet and exceed the standards of all major international regulatory authorities, including US FAA and European EASA.

SHARK LAP LIFEJACKET



SHARK LAP LIFEJACKET
The Shark 96202 (B) LAP Lifejacket is an integrated survival solution with Air Pocket Plus EBS. The LAP Lifejacket is authorised by the European Aviation Safety Agency to ETSO standard approval and has since become a worldwide industry standard product. The Air Pocket Plus Emergency Breathing System helps support the immersion victim during the underwater escape from a ditched helicopter, by helping to overcome the effects of cold shock, an involuntary physiological response to immersion in water.



MK15
Developed in conjunction with the Ministry of Defence and the Royal Air Force Institute of Aviation Medicine, the MK15 life preserver is designed for use by aircrew of helicopter and non-ejection seat aircraft.



MK44
Survitec's Beaufort crew lifejacket for rotary/fixed wing air craft comprises of a fully adjustable waistcoat and a twin chamber inflatable stole which is contained within a protective pouch. Both the front of the waistcoat and stole pouch are manufactured from 'breathable' flame retardant fabric, while the back is manufactured from mesh fabric to reduce heat discomfort and fatigue. CAA / EASA approved.



MK28 & MK16 COVERALL

MK28 (LEFT)
The MK28 Lifejacket was designed in conjunction with major operators and approval authorities for passenger and crew requirements. With an ultra slim stole pouch, the life preserver is easy to don and doff and is light weight to ensure ease of manoeuvrability. CAA and FAA approved the MK28 offers proven performance in extreme operating conditions.

MK16 COVERALL (LEFT)
Designed in conjunction with the Ministry of Defence and the Royal Air Force Centre of Aviation Medicine, the Mk16 Aircrew Coverall offers comfort to its wearers, whilst the flame-retardant Nomex fabric construction gives increased protection.

RFD BOARDING VEST (BELOW)
Floatation buoyancy device with optional integrated armour protection designed to meet the protection needs of those on the front line of defence in the Navy, Coastguard and Police.



RFD BOARDING VEST

RESCUE BOATS

We provide a range of rescue boats which have all been developed and tested in accordance with the latest SOLAS regulations. Boats available include; DSB420 (6 persons), DSB Semi Rigid inflatable boats available in various sizes, DSB work boats, Zodiac RIBO 450, Zodiac RIBO 600, FRB 600. Survitec Group can also provide the inspection, servicing and maintenance of rescue boats at a number of location through its network of 580 locations covering 2000 ports worldwide.

DSB RESCUE BOATS

The DSB range of Fast Rescue Boats have been developed and tested in accordance with the latest SOLAS/IMO regulations. DSB also make a range of Small Inflatable Rescue Boats which are all manufactured from ultra light hypalon fabric making them safe, strong, easy to handle and ideal for the Rescue Services. The Semi Rigid Rescue Boats combine an aluminium hull with an inflatable upper section giving improved performance with extra strength and reduced maintenance.

DSB WORKBOATS

Originally developed for military use, the DSB General Purpose Inflatable Workboats are highly robust and ideal for use as safety boats, water rescue boats, diving boats or workboats and have proven durable and versatile in the most adverse conditions. The Semi Rigid Rescue Boat combines an aluminium hull with an inflatable upper section offering improved performance with extra strength and reduced maintenance. The size range for the Semi Rigid Rescue Boats being 7-15 persons makes them also suitable as a workboat.

SURVITECZODIAC RIBO 450

All SurvitecZodiac Rescue Boats are SOLAS approved. This 4.5m six person boat can be launched using a 4 point sling and approved release hook – SWL > 950kg & < 1.5 tonne. It has a righting system and can be fitted with either a 25 or 40hp outboard motor.



SURVITEC ZODIAC FRB 600

SURVITECZODIAC RIBO 600

A 6.0m self righting boat. The SurvitecZodiac RIBO 600 can be sling launched using an appropriate release hook (SWL > 1500Kg). This boat features a wheel console with jockey seat, two further jockey seats, additional seating for two further passengers and additional space for a full stretcher. The RIBO 600 has been designed to take a 70 or 120hp outboard motor.

SURVITECZODIAC FRB 600

The FRB 600 is distinguished from the RIBO 600 by the addition of a single point lifting frame. It is delivered supplied with a 70hp SOLAS approved outboard motor as standard and is further fitted with two 70 litre fuel tanks.

ROBUST HEAVY DUTY INFLATABLE RTB

Boat skin and buoyancy tube made out of UV resistant Hypalon/ Neoprene with 4 independent air compartments. Single point inflation with compressed air (breathing equipment, bottle) is possible. The accessories like the rope and as well lifting sling set, the stowage bag, the paddles, etc. are further equipment. Different sizes and variations up to aluminium hull based RIBs (Rigid inflatable boat) are available.



DSB420 IRB 6 PERSONS RESCUE BOAT



SURVITECZODIAC RIBO 600



ROBUST HEAVY DUTY INFLATABLE RTB



DRYSUITS

RESCUE DRYSUIT

- 300D Nylon construction with EPE foam
- Neoprene wrist, neck seal and lined collar
- Sleeve pocket
- 600D reinforced seat and knee area
- Reflective Rescue print on rear of suit

FLEECE INCLUDED

SABRE CURVE DRYSUIT

- Extremely breathable fabric with taped seams
- Front curve dry zip
- Reinforced knees and abrasion resistant seat for durability
- Glideskin neoprene neck and cuff seals for comfort
- Fitted with latex socks

FLEECE AND DRY BAG INCLUDED



FLEECE SUIT & DRY BAG

RESCUE DRYSUIT

SABRE CURVE DRYSUIT

HEAD PROTECTION



YAK TORKEL HELMET

- High impact ABS moulded outer shell
- Multi-adjustable inner cradle for height and head size to ensure a secure, snug fit
- High density foam lining for impact protection
- Tough polyethylene ear strengthening pieces
- Adjustable chin strap



YAK SKULL CAP

- Flatlocked Neoprene construction
- Universal size
- Adjustable padded chin strap
- Soft lining for comfort and warmth

BAGS



BUTE DRY BAG

- Abrasion resistant, with heavy duty wrap around base
- Semi opaque ripstop panel for easy location of contents
- D-ring attachment
- Available in 5 - 100 litre options



LIFEJACKET BAG

- Heavy-duty construction
- Mesh drain section
- Side pocket
- Carry handle and hanging loop
- Clear PVC card window
- Large capacity - up to 5 lifejackets

PYROTECHNICS

When Rescue is your duty the products you choose need to go above and beyond, which is why when it comes to quality assurance, we are uncompromising in our commitment to deliver robust, reliable and safe solutions which meet the highest standards laid out by our industry regulators. You need our products to perform in the most hostile of environments where anything can happen. No room for margin or error they need to work all the time every time.

CYALUME LIGHT STICKS

- World leader in chemiluminescent light for safety and security applications.
- 5 minute, 30 minute, 8 Hour and 12 Hour Options available
- Variety of colours

RED HANDFLARE

- Approved to the latest Worldwide SOLAS specification
- Red hand held, short range distress signal used to pinpoint location by day or night
- Burns for 60 seconds at 15,000 candela
- Features a unique telescopic handle making it very compact and space saving when stowed in a liferaft
- Easily extended and pull wire operated

WHITE HANDFLARE

- For use in day and night short range collision warning situations, as a collision warning signal or for illuminating small areas where an intense white light is required
- Features a unique telescopic handle which makes the signal compact and saves space in stowage
- Pull-twist-strike mechanism
- Produces hot white flame for 60 seconds at 2500 candela minimum

DAY & NIGHT HANDFLARE

- Compact, hand held distress signal
- Emits a red flare 15,000 candela at one end, for use at night and day
- A dense orange smoke at the other end for daytime use
- Both ends can be fired independently and can be doused in water after firing, allowing the unused end to be stowed until required
- Housed in a rugged, corrosion & water resistant case

RED PARACHUTE ROCKET

- Designed to alert potential rescue craft
- Simple operation with rocket projecting to 300 metres at which point a parachute suspended red flare is ejected
- Burning time: 40 seconds at 30,000 candela
- SOLAS approved

POLY BOTTLE

The Poly Bottle is a heavy duty, plastic, waterproof container with a robust screw top that is ideal for storing pyrotechnics.

ICE RESCUE

INFLATABLE ICE RESCUE UNITS AND ICE RESCUE ACCESSORIES

The Ice Rescue Unit is a quick deployment inflatable rescue sledge. Light weight construction and small stowage dimensions make the Ice Rescue Unit easy to transport and inflates in a matter of seconds.

Special design means the endangered person is protected from sharp ice edges, other features include an easy to slide heavy duty bottom, fixation brackets and grab rope.

Rescue Rope: Self floating rope for immediate rescue of the endangered person

Knife: To cut entangled lines, easily attaches to the Rescuer

Rescue Line: Self floating line. Fixed on the bridle of the Ice Rescuer, connects the scene of accident with the saving team

Ice Pick: Enables and improves progress of movement on ice surface



HELIBOAT

The Heliboat is a small inflatable boat that has back pack style storage for convenience. A special chamber quick deployment system means the boat can be immediately deployed at any given time. This allows for the rescuer to deploy the boat when they have reached the casualty.

Comes fully equipped with a life rope, D-ring brackets and eight safety handles; it also has reflective areas around the boat. Underneath the boat is reinforced with additional panels.

Above Left; Inflated Heliboat | Above Right; Heavy duty back pack with back straps and direct access to the compressed air cylinder

INFLATABLE RESCUE PATH

The Inflatable Rescue Walkway is used to provide sure footing over ice, mud, shallow water or unstable ground such as sand or marsh. The Rescue Walkway is easy to transport and can be inflated in a matter of seconds.

- Creates a rigid working platform on difficult surfaces including mud, marsh ice and sand
- Lightweight - weighs 30Kg
- Fitted with lifelines and grab lines
- Quick inflation time of 10 seconds
- Additional length and/or width obtained by linking units
- Additional strength and security achieved through airtight compartments and isolation valves
- Inflation ports accept standard Fire Brigade air cylinders



SB RESCUE SLING

The SB Rescue Sling is ideal for recovering a casualty from a steep-sided canal or a lake, without the rescuer having to enter the water. The unit is a highly effective piece of man overboard rescue equipment and has proved popular on pilot boats, workboats, small passenger crafts and rescue vessels.

- Can be re-armed in just 20-30 seconds
- Ease of use even in severe weather
- Light weight ensuring ease of manoeuvrability
- Effective reach in excess of 5m

CREWSAVER RESCUE SYSTEM

The Crewsaver Rescue System comes as a complete package, designed to protect a rescuer in an in-water incident where they may be putting their lives at risk attending to the casualty. The Crewsaver Rescue System ensures that the rescuer is fully protected at all times using the following items:

- 150N Crewfit Manual Lifejacket
- 150m Safety Line
- Quick Release Hook
- Strop
- Holdall



AMBULANCE POUCH

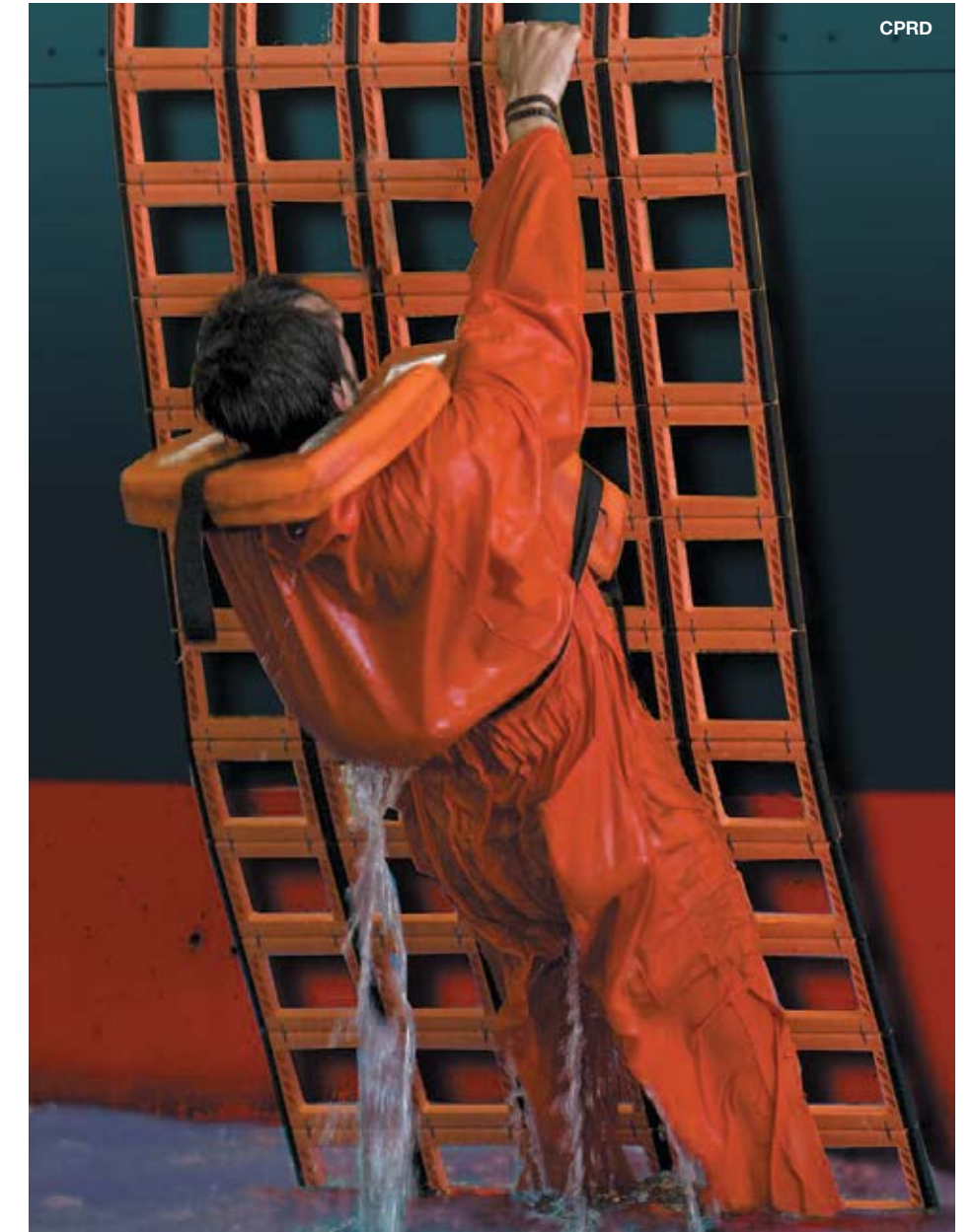
- Ambulance Pouches for transporting recovered bodies from the water to the mortuary

ANIMAL RESCUE BAG

- Contact us for more information on our range of animal rescue and pet flotation equipment

FAST RESCUE CRAFT (FRC) CPRD

- Available in two sizes as a complete kit - 3 x 14 or 4 x 15
- Supplied in a robust, high-visibility valise
- Compact enough to be stowed in the craft
- Comes complete with "Hypalon" patch fixing kits to enable attachment to the inflatable tubes on the craft



LIFE BUOYS & RESCUE LINES

LIFEBUOYS

- 22", 24" and 30" Orange Lifebuoys for use at sea and on land

SOS400 MK2 LIFEBUOY HOUSING

- Designed for 30" lifebuoy
- Suitable for wall mounting

GLADSON LIFEBUOY HOLDERS

Constant exposure to the elements can cause deterioration of vital lifesaving equipment. Lifebuoy holders can help to protect this equipment from storm damage and also act as a deterrent to vandals and thieves reducing the frequency of lifebuoy replacement.

- Available in two sizes to suit 24" and 30" life buoys. Can be supplied as freestanding units

LIFEBUOY LIGHTS

All Daniamant Lifebuoy lights are designed to deliver, as a minimum standard, the 2cd output specification and 2 hour duration required by IMO SOLAS regulations.

- Lights available include L160, L161, L162, L163, L90



RESCUE LINES



YAK RESCUE LINE (DELUXE)

- 10mm thick line with high breaking strength
- Wide opening neck for easy packing
- High visibility grab handle and retro-reflective tape
- Quick release waist belt system
- Numerous pockets and attachment points



YAK THROW BAG (STANDARD)

Invaluable piece of equipment in rescue situations

- Tough polyester construction
- Side release buckle
- 15m, 20m and 25m options available



CREWSAVER RESCUE LINE

- 5m Line - 12mm Polyprop floating line
- Breaking strain – 1600 Kg



RESCUE SLING

- Tough PVC outer fabric
- 30 meter high stretch line
- Pre-shaped rescue sling



THROWING STROP

- Tough PVC outer fabric
- 30 metre high strength line
- Strop attached with strong Velcro for ease when stowing and throwing



STRETCHERS

Our medical, first aid & emergency equipment includes an extensive range of stretchers to suit every need or occurrence. Just some of the range includes:

Neil Robertson Standard Rescue Stretcher allows for a simple and safe recovery from a difficult or unconventional situation.

Basket Stretcher - this basket can be lifted across rough or muddy terrain without affecting the patients well being

Paraguard Excel Rescue Stretcher - ideal for search and rescue operations and can be used to rescue casualties from building collapse, industrial incidents and confined spaces

Scoop Model S265 Stretcher - designed for first call work, so funeral personnel can uncouple either end, or both ends of the stretcher.

Scoop 65 Exl - enables easy access to awkward low spaces.

Combined Space Rescue Stretcher - for both horizontal and vertical lifting for confined space and rescue from height.

BASKET STRETCHER



SCOOP MODEL S265 STRETCHER

FIRST AID

A variety of different first aid kits available to suit every rescue situation.



DSB THROW OVER LIFE RAFT



RFD SURVIVA THROW OVER LIFE RAFT, 12 MAN



LIFERAFTS

In an emergency situation having the right liferaft can make the difference which is why we have gone to great efforts to offer an extensive range of liferafts to suit every need and situation.

ISO LIFERAFTS - VALISE & CONTAINER OPTIONS



OUR LIFERAFT RANGE INCLUDES;

- Throw over liferafts
- Davit launch liferafts
- Self righting liferafts
- Open reversible liferafts
- MES systems
- Means of rescue
- Solas B ISO Liferaft

Our extensive range are available in various sizes suiting 4 - 150 people per raft. Our friendly sales team can talk through your needs and requirements to help select the right liferaft for you.

HYDROSTATIC RELEASE EQUIPMENT

The standard commercial range of Hammar H20 hydrostatic release unit is designed for liferafts from 6 up to 150 persons.

During installation, the white strong rope of Hammar H20 is secured to the liferaft deck cradle and attached to the liferaft lashing with a sliphook. If the ship sinks, the water pressure will, within 4 metres, activates the sharp knife which cuts the rope allowing the liferaft to float free. As the ship sinks, the liferaft painter line will be stretched and the liferaft starts to inflate.

N.B. HRUs MUST BE REPLACED AFTER 2 YEARS.

ELECTRONICS

The McMurdo range of products provide professional and recreational mariners, fishermen, light aircraft pilots and those involved in outdoor adventure activities with the very best chance of being found without delay in the event of an emergency.



FAST FIND 220 (WITH GPS)

- Designed for marine enthusiasts and adventure
- 6 year battery life
- Safe stow antenna
- Floats with buoyancy pouch
- Transmits on 406 and 121.5 Mhz
- Global emergency alerting via COSPAS-SARSAT satellites
- Neck lanyard included
- Universal Pouch included



AIS BEACONS

SMARTFIND S10

- Manually activated personal safety device to aid recovery
- Transmits GPS target tracking information over AIS
- Small and light for easy carriage
- Waterproof, buoyant and fully submersible to 60 meters
- Flashing LED light
- Minimum 24 hours continuous operation
- 5 year battery storage life



SMARTFIND S20

- Provides accurate position information to assist fast recovery
- Transmits GPS target tracking information over AIS
- Compatible with plotters and onboard navigation systems
- Compact, 120g and designed for life jacket use
- Special TX ID transmitted every minute
- Flashing LED buzzer
- Minimum 24 hour continuous operation
- 7 year battery life
- Fast transition, typically after 15 seconds
- Waterproof



HANDHELD RADIO

GMDSS VHF Pack A R5

- Dimming and backlight control
- Battery indicator and battery saving function
- Quick channel select button
- Keypad lock
- Rotary volume control
- MED (Wheelmark) FCC approved
- Pack A - full featured option
- Battery storage and charger available



ACCESSORIES

GRAB BAG

- Designed for marine and land use
- Waterproof and buoyant
- Perfect for holding emergency equipment
- High visibility



GRAB BAG XL

- Designed for marine and aviation use
- Waterproof and buoyant
- Perfect for holding emergency equipment
- Carry handles and shoulder strap
- Watertight zip and Velcro closure
- External EPIRB pouch and flare stowage pockets



EPIRB'S

E5 SMARTFIND

- Internationally approved
- Transmits on 406 and 121.5MHz
- Non hazardous battery
- Unique CARRYSAFE bracket available
- High brightness LED flashing locator light
- Transmits for 48 hours once activated
- 5 years battery life

5 years warranty

Manual bracket and SOLAS approved auto housing options available



G5 SMARTFIND PLUS

- Internationally approved
- Transmits on 406 and 121.5MHz
- Non hazardous battery
- Unique CARRYSAFE bracket available
- High brightness LED flashing locator light
- Transmits for 48 hours once activated
- 5 years battery life
- High performance multi-channel integral GPS giving a typical location accuracy of less than +/- 62m

5 years warranty

Manual bracket and SOLAS approved auto housing options available



SART'S

SMARTFIND AID SART S5

- Internationally approved
- Waterproof to 10m
- Buoyant
- Compact and lightweight
- Non-hazardous battery for safe and easy transportation
- Minimum 96 hour operation battery life
- Visual indication of operation

RESCUE SART S4

- Ship or survival craft options
- Waterproof to 10 meters
- Buoyant
- Compact and lightweight
- Replaceable 5 year batter pack
- Audio/visual indication of operation
- Built-in test facility
- Integral Lanyard



MCMURDO BREAKTHROUGH HRU

For use with floatfree range of EPIRB's

- Automatic release if vessel sinks
- Distress signal sent to the rescue authorities via satellite
- Incorporates a specially designed plastic bolt which secures the EPIRB to the casing and the bolt is cut on activation



HAMMAR H20 HRU FOR EPIRB

For use with floatfree EPIRB

- Hammar H20 is activated if the vessel sinks
- Increasing water pressure automatically releases the EPIRB from its casing
- Incorporates a specially designed plastic bolt which secures the EPIRB to the casing and the bolt is cut on activation
- The bolt should be replaced every 2 years when the HRU is replaced



EMERGENCY LIFTING CUSHIONS



JUMPING CUSHIONS



DECONTAMINATION UNITS



SELF ERECTING TENT



40 SECOND SHELTER

EMERGENCY

EMERGENCY LIFTING CUSHIONS

Survitec manufacture Lifting Cushion for vehicles, tanks and aeroplanes, with a lifting capacity ranging from 220lbs to 132,000lbs.

JUMPING CUSHIONS

Our patented design inflates in 30 seconds making it ideal for emergency situations and with an improved lifetime of 15 years guaranteed our customers can be confident in our product. Four sizes are available which meet approved rescue heights of 16m, 23m, 30m and 40m.

WATER STOWAGE CONTAINERS

Our Water Stowage Containers can be used for a wide range of fluids and granules including drinking water, static water for fire fighting, fuel collection in case of accidents. They can be used for temporary or permanent storage. The Water Stowage Container is available in closed flexible containers or as a self-erecting open-top container.

DECONTAMINATION UNITS

Our innovative concept incorporates a fast inner over pressure air system which allows no polluted air to escape into the unit. Recently bought by the Swiss military, this product can be retracted quickly and be reused immediately if required.

SELF ERECTING TENT

New inflatable tent suitable for emergency services and long-term field solutions.

- Fast and easy assembly: only 1 person in 4 minutes;
- Larger internal space: no vertical poles;
- Modularity: possibility of connection to other EV structures through connection modules and corridors;
- Easy transport: it covers only 1 cubic meter;
- Materials: Specific PVC coated fabric that reduces the sun radiation;

40 SECOND SHELTER

Lightweight with small stowing dimensions, the DSB Fast Inflation Tent is the ideal solution for emergency situations.

- Available in three sizes; 4 x 5m, 6 x 5m and 8 x 5m
- Lightweight - When packed, the 4 x 5m shelter weighs only 55Kg (plus a cylinder)
- Easy handling - shelters can be transported by 2 people
- Detachable floor allows shelter to be rapidly placed over vehicle during an emergency situation
- Service ducts available for connecting portable heating, cooling or water etc.
- Standard fire brigade air connections accepted
- No generator or fan required to maintain shelter
- Shelters can be secured with tie-downs or surface flaps

TOOLING

Survitec Group is a major supplier of power tools to emergency services teams worldwide. It distributes, services and repairs hydraulic, pneumatic, electric and battery-powered rescue tools that can be purchased outright or hired.

VERTICAL LIFTING WENCHES

Designed to extricate victims of road traffic accidents by spreading vehicle structures open, Survitec's hydraulic vertical lifting wedge has huge lifting force, even in extremely small access gaps.

HORIZONTAL LIFTING WEDGES

Compatible with Enerpac's RC series of ten-tonne hydraulic cylinders, the single-acting, spring return WR series of horizontal lifting wedges are extremely capable in very confined work areas.

SAWS

Survitec Group supplies and services handheld circular and sabre power saws, including cordless ranges manufactured by Metabo and Trumf Tooling. All power saw products have a manufacturer's warranty.

LIGHTING

Survitec's cordless battery-powered site lighting equipment is ideal for emergency operations, providing uniform LED illumination in large working areas for up to seven hours when fully charged.



HEIGHT SAFETY

Trust our quality products and services. We are approved suppliers and service agents for the leading brands of fall protection equipment. You can rely on our knowledge and expertise to select the best products available on the market today. Our extensive range of products and services is outlined below.

PERSONAL FALL PROTECTION EQUIPMENT

- Anchors
- Harnesses
- Lanyards
- Work Restraint Systems
- Positioning Systems
- Connectors
- Fall Arrest Blocks
- Fall Arrest Recovery Blocks
- Slings
- Tripods
- Confined Space Equipment

OUR SUPPLIERS INCLUDE

- Capital Safety
- Honeywell / Sperian
- Ridge Gear
- Tractel

RESCUE SYSTEMS

- Evacuation Systems
- Self Rescue Systems
- Assisted Rescue Systems
- Stretchers and Associated Equipment

INSTALLATION, SERVICING AND INSPECTION

- System Installation
- Servicing
- Fixed System Inspections
- PPE Inspection
- Systems Training
- Hire

TRAINING

- Theoretical and Practical Modular programs with certification



A SELECTION OF PRODUCTS INCLUDE:

1. Tripod
2. Winch
3. Rollgliss Hand Winch
4. Rope Control Device
5. Helmet
6. Rope Bags
7. Rollgliss R350 & Rope Rescue
8. Rollgliss R500 Rescue
9. Rollgliss R520 Rescue
10. Rope Access/Suspension Harness
11. Rescue Harness
12. Double Lanyard
13. Positioning Lanyard
14. Anchor Slings
15. Galv Steel Sling
16. Karabiners (alloy Triple lok)
17. Pro Line

LIMPET®

The Limpet® L5 is a world-class safety and industrial access system for working at heights and in confined spaces. It combines load sensing electronics with high quality hoisting hardware to provide 5 integrated safety features that make it perfect for rescue, evacuation, suspended access, powered climb assist and fall prevention.



- Stainless steel chassis and drum
- Rugged polyamide casing
- Single safety line up to 160m; Dyneema® core w.42kN min MBL
- 220 – 240V AC, 16A, 50/60Hz
- Backup UPS power supply (optional)
- IP56 & -40C to +54C
- 63kg – semi-portable
- Multiple mounting options



PROACTIVE
FALL
PREVENTION

INTELLIGENT
CLIMB
ASSIST™

PRECISE
WORK
POSITIONING

RAPID
REMOTE
RESCUE

CLIP
& GO
EVACUATION

LIFTING, TESTING & INSPECTION

Survitec Group offers a comprehensive range of services to the commercial marine, offshore oil and gas, aviation, military, emergency services, renewable energy and industrial markets

We provide repair and maintenance, inspection and testing, training and certification management services together with a total package for the hire and management of fixed and loose lifting equipment.

All Survitec Group engineers are qualified to carry out statutory LOLER (Lifting Operations and Lifting Equipment Regulations) inspections of customer equipment on or off site. All engineers carry the LEEA TEAM (Test, Examine And Maintain) Card which provides clear evidence that Survitec Group engineers are qualified to work on a particular type of lifting equipment.

WE ARE AN APPROVED CENTRE FOR THE SERVICING OF LIFTING EQUIPMENT, INCLUDING:

- Chainblocks
- Pull lifts
- Tirfors
- Electric hoists
- Hydraulic jacks
- Pumps
- Fall arrest systems

OUR RANGE OF ONSHORE & OFFSHORE INSPECTION SERVICES INCLUDE:

- Winches
- Runway systems
- Containers
- Lifting beams
- Fall arrest equipment
- Forklifts
- Pillar
- Loose lifting equipment
- Cranes: Overhead, Mobile and Hydraulic

SURVITEC GROUP MANUFACTURING CAPABILITIES ALSO EXTEND TO:

- Chain slings
- Wire rope slings: up to 51 mm
- Wirelock resin socketting
- Roller swage fittings: 2 mm – 12 mm
- Hand splicing: 3 and 8 strand, multiplait ropes, wire ropes

HIRE

Survitec Group offer a vast range of lifting equipment for hire; all the products listed within this catalogue are available for purchase and hire. With a variety of hire options to choose from, our aim is to offer clients the most convenient and flexible service available.

Survitec Group carries a large stock of lifting equipment and our time-served and qualified engineers are available to provide on-site installation and testing of hire equipment. Survitec Group can also offer a bespoke, asset management service. Devised to alleviate customers from the pressures associated with the provision, management and tracking of lifting equipment, including:

- Taking full responsibility for a client's lifting equipment ensuring it complies with current legislation
- Recording and controlling all equipment via the Survitec FirstCert RFID Certification system, ensuring total traceability
- All items supplied for hire are fully tested and certified

Survitec's contract hire service not only provides full compliance with Health and Safety legislation but ultimately provides major costs savings through better utilisation of Lifting Equipment and overhead savings. Contact your local Survitec Group site to find out more.



SAFETY SIGNS & POSTERS

We can supply a range of safety signs, photoluminescent tapes, posters and manuals to suit your vessel's / workplace requirements.



SAFETY POSTERS



SAFETY SIGNS

TRAINING EQUIPMENT

We can supply a range of training equipment for use on board a vessel or for shore based training including liferafts, pyrotechnics, electronic equipment and rescue dummies.

COLOURED SMOKE GRENADE

Employing vivid colours and dense smoke emission, this training aid provides the optimum signalling performance required by operational troops. Available in orange, white, yellow, red, green and blue.

GRENADE HAND SMOKE SCREENING N150

Adopting a low toxicity formulation the N150 can be used in training situations without posing a health hazard or damaging the environment.

CS SMOKE PELLETS

Designed for use in all training scenarios where a controlled amount of irritant smoke is required.

FUSEE MATCHES

Fusee Matches burn with a high temperature while emitting low levels of smoke and flame. The extended burn time combined with intense heat make the Fusee Matches ideal for igniting pellets or fuses

THUNDERFLASH

A pyrotechnic composition designed to simulate battle noise during training exercise.

FLOTATION RESCUE EQUIPMENT DUMMY

FRED has been designed for use as a flotation rescue dummy with positive buoyancy for simulating marine rescues.

COLOURED SMOKE GRENADE



THUNDERFLASH



TRAINING DUMMY



CABIN EMERGENCY EVACUATION TRAINER

Designed for airline training centre's the Survitec Aircraft Evacuation Slide is available in over twenty variations. Our advanced materials and design ensure that our product is one of the most durable on the market and will withstand repeated and prolonged usage. Used extensively by some of the biggest brands in the aviation industry including Lufthansa, Emirates, Etihad, and the Austrian and Turkish airlines the Survitec Aircraft Evacuation Slide is the best and most trusted product of its kind.





ROPE

Survitec Group can supply a wide range of products and services to the Emergency Services for both inland and offshore situations. Our capabilities also extend to rope training, rope installation, visual inspection and destructive testing.

We can offer a range of ropes to suit a vast array of applications including:

NATURAL FIBRES

- Hemp
- Manila
- Sisal

MAN-MADE FIBRES

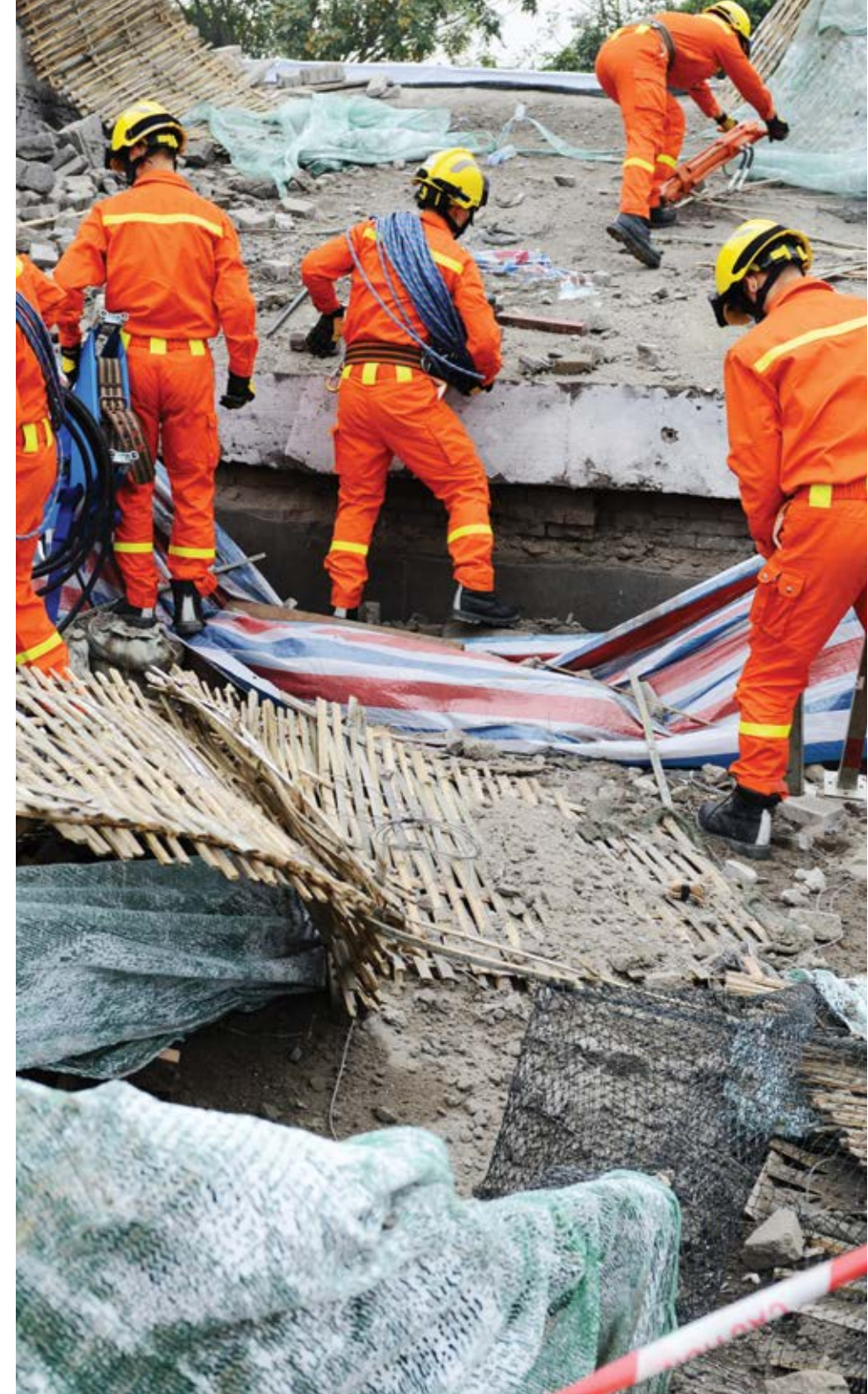
- Nylon
- Polyester

WIRE ROPES

Standard Galvanised Steel Wire Ropes for mooring and towing applications. These ropes are available in 'fibre core' construction, however the steel core provides additional strength, stability against crushing or deformation on drums, pulleys etc.

MOORING TAILS

Survitec Group can also supply nylon and composite fibre mooring tails in order to provide elasticity in a mooring system. This helps to reduce damage to wire and Dyneema® ropes by absorbing shock loads.





SERVICING

TRAINING, SERVICING & CONSULTANCY

A range of services we can offer you...

SERVICING

Our global network of over 580 service & distribution centres spans over 2000 ports worldwide. Through any of these centres we can offer you a complete service of your life jackets and/or liferafts. Our full qualified, experienced and trained professionals will do a thorough check of your products to ensure they are in full working order and fit for purpose.

TRAINING

Using your products correctly is an essential part of the job, care and maintenance is vital to prolong their life and ensuring they are fit for purpose. With safety equipment being more technical than ever this can be a complicated learning process. To make this a little easier and make sure you have the correct understanding of the products to do the job they were designed for, we offer a complete training service, teaching you everything you need to know to be able to understand and use your products correctly and care and maintain them so they continue a longer life.

HIRE

At Survitec, we are always working closely with our customers to help provide solutions to the challenges they face in the constantly changing, global environment.

Over the past couple of years, the majority of our clients have expressed that they no longer see the procurement of lifesaving appliances as buying a product, but rather as fulfilling the need for a holistic safety solution. As a world leading manufacturer and service provider of critical safety equipment, we have introduced the Survitec Global Services programme to the marine market, with liferaft hire being the cornerstone of this integrated programme.

Survitec Global Services can also offer lifejacket, lifting and testing equipment as well as immersion suit hire packages, whereby customers enjoy both immediate and long-term benefits, knowing they are fully backed by the global service station support network.

DESIGN & CONSULTANCY

Work with our design team to create your own product, ensuring that what you have is suitable for the job you are doing. Ideal for people working in very specific environments or people who need their equipment to meet specific standards or regulations. See how we do this with the Italian Fire Brigade.

ITALIAN FIRE BRIGADE

We have been working with the Italian Fire Brigade for over 6 years, designing and custom making their dry suits to specifically cater for their needs. Supplying over 300 dry suits per year with the option to tweak and adjust when required demonstrates how you can successfully work with our design team to create products to meet your every need and requirement.



Custom made vibrant colours to specifically cater to the Italian Fire Brigades uniform colours.



CUSTOM MADE DRYSUITS FOR THE ITALIAN FIRE BRIGADE



QUALITY STANDARDS: All Crewsaver Lifejackets, Buoyancy Aids, Harnesses and Safety Lines are fully Approved and CE Marked.

What Is Required?

All Crewsaver Lifejackets are designed and manufactured to combined British and European standards. All Lifejackets carry the CE symbol which shows that the lifejacket has been independently assessed and approved to these standards by an authorised test house. These standards are intended to ensure that all Lifejackets sold in this country meet very stringent requirements regarding the design, performance, materials and components used and even given guidelines regarding the information to be provided to the customer about the Lifejacket.

Safety Harnesses

The CEN Standard is based on three main reasons for wearing a deck Safety Harness, including securing the wearer on deck, prevent them from falling into water and to assist their recovery back onto the deck. They are not intended to prevent falls from a height. The Standard also states that in the case of a combined Lifejacket and Safety Harness, both elements must be tested and have separate CE Approval.

MED Directive

This is the equivalent of the CE Standard for Lifejackets, that must be applied to all SOLAS equipment for use on commercial vessels. Approval to this directive is represented by the ships wheel.

ISO 9001

Crewsaver is approved by Lloyds Register Quality of Assurance to ISO 9001 the scope of which includes the design and manufacture of marine safety equipment. Part of being an ISO 9001 company requires that during the manufacturing stage, critical materials including all components (inflation chamber material, inflation head, components of harness and webbing) are batch recorded. This enables each individual component to be targeted and isolated, should a Quality Control Manager not be 100% certain that it is safe for production use.

How is quality controlled during the manufacturing process?

At Crewsaver the manufacture of life saving equipment is never taken lightly. As legislation toughens, Crewsaver are always one step ahead to ensure that the final product supplied to you is above the basic level of quality required.

Testing is continuous throughout the manufacturing cycle of each inflatable Lifejacket. For example the inflation chambers of the Lifejackets are manufactured in batches. The first inflation chamber from each batch is subjected to a test whereby it is inflated manually to a specified pressure, the equivalent of a double inflation.

When might a Lifejacket double inflate in real use? On sensing danger, and as a precaution, the wearer might inflate the Lifejacket by mouth. If the wearer then enters the water, and the Lifejacket is automatically operated, the CO₂ cylinder would then discharge into the inflation chamber, thus causing a double inflation.

On completion of the batch each inflation chamber is inflated to 3lb/sq inch and must maintain that pressure for 30 minutes. After the inflation chambers have been sewn into the Lifejackets, the completed Lifejackets are passed to our Packing Department where they are subjected to a further inflation test of 30 minutes at 3lb/sq inch.

Finally each Lifejacket is carefully inspected for any minor flaws or imperfections before it is packed ready to send out.

Copyright Notice

The copyright, trademarks, domain names and other intellectual property rights in all material and information in this presentation belongs to Survitec Group Limited. All rights are reserved.

Disclaimer

This document provides general information about Survitec Group and its companies, its products and services, and summarises general capabilities and offerings which we deem to be of relevance to our customers. Whilst Survitec has taken appropriate steps to ensure the accuracy of the information contained in this document, Survitec gives no warranty regarding the accuracy or completeness of such information.

This presentation was prepared to provide information and does not constitute a contract. Survitec reserves the right, without prior notice, to change, delete, supplement, or otherwise amend at any time the information, images, and offerings contained in this presentation, or other documents. Survitec shall not be liable for any loss or damage of whatever nature (whether direct, indirect, consequential or other) that may arise as a result of any third party relying on the information contained in this document (but nothing in this disclaimer excludes liability for death or personal injury arising from negligence or any fraudulent misrepresentation).

For further detailed information, prices, terms and conditions, customers should contact Survitec at info@survitecgroup.com

Survitec Group

Survitec Group Limited

International House, George Curl Way
Southampton, SO18 2RZ, United Kingdom.

T: +44 (0)2380 302 020 | F: +44 (0)2380 302 177

Email: info@survitecgroup.com

www.survitecgroup.com